

**Saturday, MARCH 10, 2018, 9:00 A.M. to 1:00 P.M.**



The City of Baton Rouge, Parish of East Baton Rouge Environmental Services - Recycling Division

# Household Hazardous Materials Collection Day

**East Baton Rouge residents only, no commercial waste accepted**

**Memorial Stadium Parking Lot, East Side Only**

Residents should enter the collection site from Scenic Highway at Foss Street

**For more information visit [www.brgov.com/recycle](http://www.brgov.com/recycle)**

## Materials accepted

- ✓ Acids
- ✓ Aerosol cans
- ✓ Arsenic
- ✓ Auto products including used oil, antifreeze, brake fluid, diesel, oil & fuel filters, gasoline, gas & oil mixtures
- ✓ Cooking oil
- ✓ Glycerol, glycerin
- ✓ Batteries including NiCD, lead acid, alkaline, rechargeable
- ✓ Bleach, bowl cleaners
- ✓ Bug sprays
- ✓ Wood preservatives
- ✓ Cleaning solvents
- ✓ Corrosive cleaners
- ✓ Degreasers
- ✓ Disinfectants
- ✓ Paint thinner
- ✓ Paint: latex, oil, stain, varnish, shellac
- ✓ Fluorescent tubes & compact fluorescent bulbs
- ✓ Glue
- ✓ Electronic equipment; ink cartridges, copiers, cell phones, fax machines, computers
- ✓ Lawn and garden products including pesticides, herbicides, fungicides, fertilizer
- ✓ Lighter fluid
- ✓ Metallic mercury
- ✓ Moth balls
- ✓ Oven cleaners
- ✓ Drain cleaners
- ✓ Turpentine
- ✓ Polishes
- ✓ Pool chemicals
- ✓ TVs, stereos
- ✓ Automobile tires (limit 5)
- ✓ Propane tanks and bottles
- ✓ Video tapes, floppy disks, digital tapes, CDs, DVDs

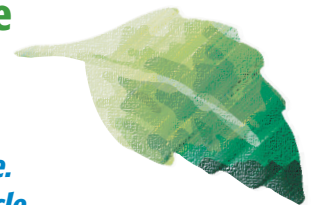
**Liquids should be labeled  
and in closed containers**

## Materials not accepted

- ✗ Ammunition, explosives
- ✗ Fireworks
- ✗ Non-residential waste
- ✗ Radioactive devices (smoke/fire detectors)
- ✗ Large gas cylinders such as helium, freon or acetylene
- ✗ Styrofoam including peanuts
- ✗ Construction/demolition debris
- ✗ School lab waste
- ✗ Fire extinguishers
- ✗ Appliances
- ✗ Furniture
- ✗ Power tools
- ✗ Any liquid in containers larger than 5 gallons
- ✗ Medical waste/all medicines

## Comprehensive Baton Rouge Green Guide

*available free on line.*  
[www.brgov.com/recycle](http://www.brgov.com/recycle)



Visit [www.brgov.com/recycle](http://www.brgov.com/recycle) for helpful tips,  
free brochures and information about how you can

**Go Green in Red Stick!**

### SPONSORS and PARTNERS

City of Baton Rouge and Parish of East Baton Rouge: Department of Environmental Services, Baton Rouge Fire Department Haz-Mat Unit, Baton Rouge City Police, EMS, Stericycle Environmental Solutions, Louisiana Department of Environmental Quality (LDEQ), WRKF, Habitat for Humanity, Southern Recycling, Capital Area Corporate Recycling Council (CACRC), Interstate Batteries of Greater Baton Rouge, WAFB Ch. 9, Louisiana Department of Agriculture & Forestry, Baton Rouge Recreation and Parks Commission (BREC), Baton Rouge Coca-Cola Bottling Company, Whole Foods Market, The Advocate



# Where to Recycle Household Hazardous Materials Year Round

Call businesses to get details, as items and locations may change

MATERIAL	BUSINESS	ADDRESS	TELEPHONE
Paint/full cans	Habitat for Humanity	4301 Airline Hwy.	355-1895
Automotive batteries	Auto Zone	All Locations	
	Gayle Battery	16555 Plank Rd.	774-7475
	Rapid Lube & Tune-up	5615 Essen Lane	767-5754
	Simple Simon Car Care	7777 Airline Hwy.	927-2311
	Simple Simon Car Care	12116 Airline Hwy.	751-3656
	Interstate Batteries	11131 Airline Hwy.	295-3711
	Interstate Batteries	3154 College Dr.	389-6649
	O'Reilly Auto Parts	All locations	
	Wholesale Battery Co.	9266 Mammoth Ave.	926-4693
	Walmart Tire & Lube	All locations	
Used motor oil	Auto Zone	All Locations	
	Pep Boys	9704 Airline Hwy.	927-6233
	Express Care Automotive	5960 S. Sherwood Forest	368-2273
	O'Reilly Auto Parts	All locations	
	Rapid Lube & Tune Up	5615 Essen Lane	767-5754
	Simple Simon Car Care	7777 Airline Hwy.	927-2311
	Simple Simon Car Care	12116 Airline Hwy.	751-3656
	Walmart Tire & Lube	All locations	
Oil Filters	Pep Boys Automotive	9704 Airline Hwy.	927-6233
	Rapid Lube & Tune Up	5615 Essen Lane	767-5754
	Simple Simon Car Care	7777 Airline Hwy.	927-2311
	Simple Simon Car Care	12116 Airline Hwy.	751-3656
	Express Care Automotive	5960 S. Sherwood Forest	368-2273
Anti-freeze	Pep Boys Automotive	9704 Airline Hwy.	927-6233
	Rapid Lube & Tune Up	5615 Essen Lane	767-5754
	Simple Simon Car Care	7777 Airline Hwy.	927-2311
	Simple Simon Car Care	12116 Airline Hwy.	751-3656
Computers & Electronics	CACRC	1400 Main St.	379-3577
	Best Buy Stores	All locations	
	LEI Lamp Recyclers	11441 Fontana Ln., Independence	800-309-9908
TVs	Best Buy Stores*	All Locations - up to 42"	
	Here Today Gone Tomorrow**	10240 Burbank Dr.	769-2259
Fluorescent tubes & fluorescent compact bulbs	LEI Lamp Recyclers	11441 Fontana Ln., Independence	800-309-9908
Fluorescent compact bulbs	Home Depot	All Locations	
	Lowe's	All Locations	
Mercury devices, thermostats, switches, relays, thermometers, thermocouples	LEI Lamp Recyclers	11441 Fontana Ln., Independence	800-309-9908
Batteries all chemistries: thermal, carbon-zinc lead acid, nickel (iron & cadmium), lithium, silver oxide, mercury, silver zinc	Interstate Battery Center	3154 College Dr.	389-6649
	LEI Lamp Recyclers	11441 Fontana Ln., Independence	800-309-9908
NiCd Batteries	Home Depot	All locations	
	Lowe's	All locations	
	Interstate Battery Center	3154 College Dr.	389-6649
Propane tanks 4-40 lbs.	All permitted LP-Gas dealers, wholesalers & retailers are required to accept old tanks for refurbishment, recycling or disposal at no charge to consumer.		

\*There is a fee for recycling televisions at Best Buy

\*\*will only take working televisions

## LATEX PAINT IS NOT HAZARDOUS.

Please dispose of correctly or recycle year-round at Habitat Restore. Don't put cans with liquid latex paint or ANY oil paint in garbage can.



- Empty or dried up latex paint cans with the lids off can go into your garbage cart because Latex Paint is NOT Hazardous.
- **How to dry out latex paint for home disposal:** If there's an inch or less of paint in the can, remove lid and let paint dry out. If there's more than an inch of paint left, mix paint with equal amount of cat litter, stir and let dry before placing in garbage cart.
- **OIL PAINT is HAZARDOUS** and can be safely disposed of at Household Hazardous Materials Collection Day.

Habitat Restore will accept full or partially full cans of Latex Paint or Stain, and full cans of Oil Paint year round. Call (225) 335-1895 for details.