

ATTACHMENT 1
Waterford 3 Steam Electric Station

REVISION LOG

Revision	Date	Comments
6	6/30/86	LRPD
7	12/30/91	LRPD
8	4/95	LRPD
8-update	3/96	LRPD
8-update	3/97	LRPD
9	5/00	LDEQ
9-update	5/00	LDEQ
10	10/05	LDEQ
10-update	6/30/10	FEMA plan review updates
10-update-2	8/31/10	Added Ochsner Flight Care to LOA.
11	1/5/11	Complete update
12	12/2013	Complete update
13	12/2014	Complete update
13- update	05/22/2015	NUREG cross reference change C.6 to Appendix I
14	12/2015	Complete Update

ATTACHMENT 1
FOREWORD
ST. CHARLES PARISH

This plan, consisting of the General Plan and the Parish Enclosure, has been developed as an operations guide for St. Charles Parish in preparing for and conducting local government emergency operations in the event of an incident at Waterford 3 Steam Electric Station.

Emergency Implementing Procedures to implement and support functional assignments by the responsible Parish departments/agencies have been developed and are maintained in current status.

This plan shall be revised, updated, tested periodically and maintained in current status to assure a state of maximum readiness for the protection of public health, safety and property.

This revision to the Radiological Emergency Response Plan for St. Charles Parish, State of Louisiana, is declared official and is effective upon receipt.

APPROVED:

Director, Parish Office of
Homeland Security and Emergency Preparedness
St. Charles Parish

ATTACHMENT 1
FOREWORD
ST. JOHN THE BAPTIST PARISH

This plan, consisting of the General Plan and the Parish Enclosure has been developed as an operations guide for St. John the Baptist Parish in preparing for and conducting local government emergency operations in the event of an incident at Waterford 3 Steam Electric Station.

Emergency Implementing Procedures to implement and support functional assignments by the responsible Parish departments/agencies have been developed and are maintained in current status.

This plan shall be revised, updated, tested periodically and maintained in current status to assure a state of maximum readiness for the protection of public health, safety and property.

This revision to the Radiological Emergency Response Plan for St. John the Baptist Parish, State of Louisiana, is declared official and is effective upon receipt.

APPROVED:

Director, Department of Public Safety
Office of Homeland Security and Emergency Preparedness
St. John the Baptist Parish

**Louisiana Peacetime Radiological Response Plan
Attachment 1
Waterford 3 Steam Electric Station**

TABLE OF CONTENTS

	Page
Revision Log	2
Foreword	3
Table of Contents	5
Attachment 1 NUREG-0654 Cross Reference	7
Acronyms for Attachment 1	12
General Plan	
I. Introduction	
A. Authority	13
B. Purpose	13
C. Development and Organization	13
D. Scope	14
II. Concept of Operations	14
III. Administration	
A. Responsibility	16
B. Review and Revision	16
C. Distribution	16
IV. Chapters	
1. Emergency Classification System	17
2. Public Education and Information	20
3. Accident Assessment	24

	Page
4. Ingestion Pathway (50-mile) Emergency Planning Zone	25
5. Radiological Exposure Control	27
6. Reentry and Recovery	33
7. Exercises and Drills	35
8. Radiological Emergency Response Training	39

Appendices

A. Accident Notification and Coordination	42
B. Plume Exposure Pathway (10-mile) EPZ Maps	45
C. Ingestion Exposure Pathway (50-mile) EPZ Map	52
D. Evacuation Time Estimate	55
E. Radiological Sampling and Monitoring Location	63
F. Glossary of Terms	64
G. Reference Documents	666672
H. Letters of Agreement	696975
I. Hostile Action Based Plan	717177

Enclosures

I. St. Charles Parish Radiological Emergency Response Plan	737378
St. John the Baptist Parish Radiological Emergency Response Plan	11311311
II.	9

ATTACHMENT 1
NUREG-0654 CROSS REFERENCE

'0654' Criteria	Where to Refer
A.1.a	Enclosures I-II, Section D
A.1.b	Enclosures I-II, Sections C, D and E
A.1.c	Enclosures I-II, Figure D-1
A.1.d	Enclosures I-II, Sections C and D
A.1.e	Enclosures I-II, Sections E, F.1. and F.2
A.2.a	Enclosures I-II, Sections A, B,D and Figure D-2
A.2.b	Attachment 1, Section I.A: Enclosures I-II, Sections B and C
A.3	LPRRP, Chapter 14 and Tab 1; Attachment 1, Appendix H; Enclosures I-II, Section B
A.4	Enclosures I-II, Section D.1 and E; Appendix I-3
C.1.c	LPRRP, Basic Plan, Section VII.A.4; Attachment 1, Sections II.G, II.I and II.M; Appendix I Sections II.e, III.a.i and ii, and IV; Enclosures I-II, Section F and Appendix I-3
C.2.a	Enclosures I-II, Section E.
C.4	Attachment 1, Appendix H; Enclosures I-II, Section D
C.6	Attachment 1, Appendix I; Appendix I.II.k and I.V.a
D.3	Attachment 1, Section IV, Chapter 1 and Tab A
D.4	Enclosures I-II, Sections D and E, Appendices I-1, I-2 and I-3
E.1	Attachment 1, Appendix A, Tab A and B, and Appendix I.III.b; Enclosures I-II, Section E and Appendix I-3
E.2	LPRRP, Chapter 4, Section IV; Enclosures I-II, Sections E and F, Appendices I-1 and II-1
E.5	Attachment 1, Section IV, Chapter 2.B.2 and Appendix H; Enclosures I-II, Sections E and F, Appendix I-3
E.6	LPRRP, Chapter 4, Section IV; Enclosures I-II, Sections D.1.c.i.12, F.7-8, Figure F-2 and F-2a and G
E.7	LPRRP, Chapters 4 and 5; Attachment 1, Section IV, Chapter 2, Tab A; Enclosures I-II, Section E.5
F.1.a	Enclosures I-II, Section F
F.1.b	Enclosures I-II, Section F and Figure F-1
F.1.d	Enclosures I-II, Section F

'0654' Criteria	Where to Refer
F.1.e	Enclosures I-II, Sections E, F.2 - F.6
F.2	Enclosures I-II, Section F.4 and Figure F-1
F.3	LPRRP, Chapter 13, Section IV.A; Attachment 1, Section IV, Chapter 7, Enclosures I-II, Section F.8
G.1	Attachment 1, Section IV, Chapter 2
G.2	LPRRP, Chapter 5, Section IV.A.6-7 and Chapter 8.IV.E.11; Attachment 1, Section IV, Chapter 2.B.1
G.3.a	LPRRP, Chapter 5, Section IV.B; Attachment 1, Section IV, Chapter 2.B.2.g-i
G.4.a	Attachment 1, Section IV, Chapter 2.B.2.g-i, Appendix I.VI; Enclosures I-II, Section D.1.c.ii and F.2, 5-6
G.4.b	LPRRP, Chapter 5, Section IV.B; Attachment 1, Section IV, Chapter 2.B.2.g-i; Enclosures I-II, Section D.1.c.ii and Sections F.2, F.5 and F.6
G.4.c	LPRRP, Chapter 5, Section IV.B.4; Attachment 1, Section IV, Chapter 2.B.2.j-k
G.5	LPRRP, Chapter 5, Section IV.A.8; Attachment 1, Section IV, Chapter 2.B.1
H.3	Attachment 1, Section II, Enclosures I-II, Section C, Appendix I-3
H.4	Attachment 1, Section II, Enclosures I-II, Section E
H.7	LPRRP, Chapter 6, Tab 3, Paragraph G and Table 1, Tab 4; Attachment 1, Section IV, Chapter 3.B.1.c
H.10	LPRRP, Chapter 6, Tab 3, Paragraph G; Attachment 1, Section IV, Chapter 5
H.11	LPRRP, Chapter 6, Tab 3, Table 1; Attachment 1, Section IV, Chapter 5, Tab A
H.12	LPRRP, Chapter 6, Section III.A and Tab 3, Paragraphs II.A, III.D and III.E
I.7	LPRRP, Chapter 6, Tabs 3 and 5
I.8	LPRRP, Chapter 6, Section III and Tab 3; Attachment 1, Section IV, Chapter 3.B.1 and c and Chapter 4.B.4
I.9	LPRRP, Chapter 6, Tab 3, Paragraph F; Attachment 1, Section IV, Chapter 3.B.1 and 3
I.10	LPRRP, Chapters 6, 7, 8 and 11; Attachment 1, Section IV, Chapter 3.B.1 and 3, and Chapter 4.B.4
I.11	LPRRP, Chapter 6, Section III and Tab 3; Attachment 1, Section IV, Chapter 3.B.1 and 3
J.2	Attachment 1, Section II.P and Appendix D; Enclosures I-II, Section G.8 and Appendix I-3
J.9	Attachment 1, Section IV, Chapters 3 and 4; Enclosures I-II, Section G
J.10.a	LPRRP, Chapter 5, Section IV.A.5 and Chapter 8, Tab 1; Attachment 1, Appendix B, C, D, E; Enclosures I-II, Figure G-1
J.10.b	Attachment 1, Appendix B, Appendix C

'0654' Criteria	Where to Refer
J.10.c	Attachment 1, Appendix H; Enclosures I-II, Sections E.5 and F.7, and Appendix I-3
J.10.d	Enclosures I-II, Sections G and H, Appendix I-3
J.10.e	LPRRP, Chapter 9, Tab 1; Attachment 1, Section IV, Chapter 5; Enclosures I-II, Section D.1.c, Appendix I-3
J.10.f	LPRRP, Chapter 9, Section IV.A; Attachment 1, Section IV, Chapter 5
J.10.g	Attachment 1, Section II.A.14; Enclosures I-II, Section G.8, Appendix I-3
J.10.h	LPRRP, Chapter 7, IV.B.4.a.iii; Attachment 1, Appendix H; Enclosures I-II, Sections D.1.c.i.9, D.1.f.iii, D.2.c.i.ii&vi; Section G.8 and Figure G-1, Appendix I-3
J.10.i	Attachment 1, Appendix D and Appendix I.V.a; Enclosures I-II, Section D.1.g, Appendix I-3
J.10.j	Enclosures I-II, Sections D.1.d & g, D.2.d.i, Figure D-1 and D-2, G.1 and G.3, Appendix I-3; Waterford-3 Steam Electric Station Development of Evacuation Time Estimates, Appendix G, Figure G-1.
J.10.k	Enclosures I-II, Section D.1.d&g, Section G.3, G.8.c, Appendix I-3
J.10.l	Attachment 1, Appendix D; Waterford-3 Steam Electric Station Development of Evacuation Time Estimates, Chapter 8.
J.10.m	LPRRP, Chapter 7, Section IV; Enclosures I-II, Section G
J.11	LPRRP, Chapter 4, Section B.1-3; Chapter 8; Attachment 1, Section IV, Chapter 2, Tab A.5-6; Chapter 4; Enclosures I-II, Section D.2.b
J.12	LPRRP, Chapter 9, Section IV.B; Attachment 1, Section IV, Chapter 5.B.1.c and Tab A; Enclosures I-II, Sections G.3 and H.1
K.3.a	LPRRP, Chapter 6, Tab 3, Table 1; Chapter 9, Sections III.A, V.B. and V.D; Attachment 1, Section IV, Chapter 5.B; Enclosures I-II, Appendix I-3
K.3.b	Attachment 1, Section IV, Chapter 5
K.4	LPRRP, Chapter 7, Section V.D.5; Attachment 1, Section IV, Chapter 5, Appendix I-3
K.5.a	Attachment 1, Section IV, Chapter 5
K.5.b	Attachment 1, Section IV, Chapter 5
L.1	LPRRP, Chapter 10, Tabs 3 and 4;; Attachment 1, Appendix H; Enclosure I, Sections D.3.b, H.2; Enclosure II, Sections D.3.a, H.2; Ochsner Clinic Foundation Radiation Accident Plan; West Jefferson Medical Center Policy and Procedures for Treatment of Radioactively Contaminated Patient(s).
L.4	LPRRP, Chapter 10, Section IV.A-B and Tab 2; Attachment 1, Appendix H.4; Enclosures I-II, Sections H.2; St. Charles Parish Hospital Policy & Procedure Manual: Response to an Emergency at Waterford 3/Offsite and Onsite
M.1	LPRRP, Chapter 11; Attachment 1, Section IV, Chapter 6
M.3	LPRRP, Chapter 11

'0654' Criteria	Where to Refer
M.4	LPRRP, Chapter 11, Section III.J
N.1.a	LPRRP, Chapter 13, Section III.A; Attachment 1, Section IV, Chapter 7
N.1.b	LPRRP, Chapter 13, Section III.A; Attachment 1, Section IV, Chapter 7
N.1.d	LPRRP, Chapter 13, Section III.A; Attachment 1, Section IV, Chapter 7
N.2.a	LPRRP, Chapter 13, Section IV.A; Attachment 1, Section IV, Chapter 7
N.2.c	Attachment 1, Section IV, Chapter 7
N.2.d	LPRRP, Chapter 13, Section IV.C; Attachment 1, Section IV, Chapter 7
N.3.a	LPRRP, Chapter 13, Section V; Attachment 1, Section IV, Chapter 7
N.3.b	LPRRP, Chapter 13, Section V; Attachment 1, Section IV, Chapter 7
N.3.c	LPRRP, Chapter 13, Section V; Attachment 1, Section IV, Chapter 7
N.3.d	LPRRP, Chapter 13, Section V; Attachment 1, Section IV, Chapter 7
N.3.e	LPRRP, Chapter 13, Section V; Attachment 1, Section IV, Chapter 7
N.3.f	LPRRP, Chapter 13, Section V; Attachment 1, Section IV, Chapter 7
N.4	LPRRP, Chapter 13, Section III.D and E; Attachment 1, Section IV, Chapter 7
N.5	LPRRP, Chapter 13, Section III.E and F; Attachment 1, Section IV, Chapter 7
O.1	Attachment 1, Section IV, Chapter 8
O.1.b	Attachment 1, Section IV, Chapter 8
O.4.a	Attachment 1, Section IV, Chapter 8
O.4.b	LPRRP, Chapter 12, Section III
O.4.d	Attachment 1, Section IV, Chapter 8
O.4.f	Attachment 1, Section IV, Chapter 8
O.4.g	Attachment 1, Section IV, Chapter 8
O.4.h	Attachment 1, Section IV, Chapter 8
O.4.j	Attachment 1, Section IV, Chapter 8
O.5	Attachment 1, Section IV, Chapter 8
P.1	Attachment 1, Section IV, Chapter 8
P.2	Enclosures I-II, Section D.1

'0654' Criteria	Where to Refer
P.3	Enclosures I-II, Section D.1
P.4	LPRRP, Basic Plan, Section VI.B.1.c and B.4.v; Section VIII.C and Tab 1; Chapter 8, Section IV.E.10 and Tab 1; Attachment 1, Section III.B
P.5	LPRRP, Basic Plan, Section VIII.B , C, and Tab 1; Attachment 1, Section III.B; Attachment 1 , Section VIII.C
P.6	Attachment 1, Appendix G
P.7	Enclosures I-II, Appendices I-1, I-2, and I-3
P.8	Attachment 1, TOC, p. 5; Attachment 1, Cross Reference, p. 7
P.10	Enclosures I-II, Section D.1.c.i.3

Acronyms for Attachment 1

ANS	-	Alert Notification System
DEP	-	Director of Emergency Preparedness
DOE	-	Department of Energy
EAL	-	Emergency Action Level
EAS	-	Emergency Alert System
EBS	-	Emergency Broadcast System
ECL	-	Emergency Classification Level
EOC	-	Emergency Operations Center
EOF	-	Emergency Operations Facility
EOI	-	Entergy Operations, Inc.
EPA	-	Environmental Protection Agency
EPC	-	Emergency Preparedness Coordinator
EPZ	-	Emergency Planning Zone
FEMA	-	Federal Emergency Management Agency
GOHSEP	-	Louisiana Office of Homeland Security & Emergency Preparedness
JIC	-	Joint Information Center
KI	-	Potassium Iodide
LDEQ	-	Louisiana Department of Environmental Quality
LPRRP	-	Louisiana Peacetime Radiological Response Plan
NRC	-	Nuclear Regulatory Commission
OHL	-	Operational Hotline
PAG	-	Protective Action Guide
PAS	-	Protective Action Section
PIO	-	Public Information Officer
TLD	-	Thermoluminescent Dosimeter
W3P	-	Waterford 3 Parishes
W3SES	-	Waterford 3 Steam Electric Station

ATTACHMENT 1

I. Introduction

A. Authority

1. State

- a. The Louisiana Homeland Security and Emergency Assistance and Disaster Act
- b. The Louisiana Environmental Quality Act, La. R. S. 30:2001 et seq.

2. Local

Ordinances or resolutions enacted pursuant to requirements or authorities cited in the Plan.

3. Federal

- a. Federal Civil Defense Act of 1950, as amended 50 USCA App.2251 et seq.
- b. Stafford Disaster Relief and Emergency Assistance Act, P. L. 101-707

B. Purpose

This Attachment is intended to serve as a tool and reference for emergency actions and procedures in response to a fixed nuclear facility accident at Entergy Operations Inc. (EOI) Waterford 3 Steam Electric Station (W3SES) near Taft, Louisiana. The information is solely for utilization by governing officials of St. Charles and St. John the Baptist Parishes. As such, it will allow for an integrated, comprehensive and efficient response of State and local government and Waterford 3 in the event of a radiological accident at Waterford 3 Steam Electric Station (W3SES). The Concept of Operation is purposefully outlined to ensure protection of the health, safety and welfare of the populace, both resident and transient, within the risk areas of the above named Parishes.

C. Development and Organization

1. This first attachment to the "Louisiana Peacetime Radiological Response Plan" (LPRRP) is for Waterford 3 Steam Electric Station (W3SES) near Taft, Louisiana. It has been developed by the Office of Homeland Security and Emergency Preparedness, St. Charles Parish, and the Office of Homeland Security and Emergency Preparedness, St. John the Baptist Parish. These two parishes will together be referred to as the Waterford 3 Parishes (W3P). Preparation of this Attachment was coordinated by Louisiana Department of Environmental Quality (LDEQ).

2. The content of this Attachment has been developed in accordance with the guidelines of the LPRRP and the criteria as set forth by the Federal Emergency Management Agency (FEMA) and the Nuclear Regulatory Commission (NRC), in its document, NUREG-0654 / FEMA-REP-1, Revision 1, entitled "Criteria for Preparation and Evaluation of Radiological Emergency Response Plans and Preparedness in Support of Nuclear Power Plants", November, 1980.
3. This Attachment has been arranged in two major divisions, a General Plan section and an Enclosure section. The General Plan includes all that information which is generic to all the W3P. The Enclosure section is comprised of two individual Parish Radiological Emergency Response Plans. The nature of the information included in the Enclosure section tends to be Parish specific.

D. Scope

This Attachment provides the basis for the coordination of offsite emergency response by State and local government and Waterford 3. It has been designed so that the planning measures are detailed for response from the onset of an incident to its termination and recovery. It is intended to be comprehensive, i.e. the information included will allow for rapid and appropriate protective measures so as to safeguard the public in the event of an accident, regardless of its severity. Particular attention has been paid to the areas of notification, methods and procedures, emergency communication, public information and education, and exercises and drills. Although every effort has been made to produce a thorough and accurate document, revisions will be made continually throughout the operational life of the Waterford 3 Steam Electric Station (W3SES), as needed and appropriate.

II. Concept of Operation

The following constitutes the Concept of Operation for Attachment 1:

- A. The information in this Attachment is organized into a General Plan portion of generic information to the Waterford 3 parishes (W3P) and individual Enclosures of specific information for each Parish. Therefore, by design, each Parish will have its specific Enclosure in combination with the General Plan which together will provide all the information necessary to meet the requirements of NUREG-0654 FEMA-REP-1, Rev. 1.
- B. EOI, as licensee for Waterford 3 Steam Electric Station (W3SES), will provide initial notification and all follow-up notifications pursuant to any radiological accident or potential accident including its termination and final plant status.
- C. Any event or sequence of events which occur at Waterford 3 Steam Electric Station (W3SES) that could impact the populace in the area offsite from the

plant will be classified according to established Federal (NRC and FEMA) guidelines; i.e. one of the Emergency Classifications (ECLs) of Notification of Unusual Event, Alert, Site Area Emergency, or General Emergency will be declared as appropriate to the situation.

- D. Waterford 3 Steam Electric Station (W3SES) will activate its emergency centers--the Technical Support Center (TSC), the Operational Support Center (OSC), the Emergency Operations Facility (EOF), and the Joint Information Center (JIC), when required, based on accident severity. Coordination with Parish and State government will be continuous through the use of communication networks and contact with liaison personnel.
- E. In the event of an accident at Waterford 3 Steam Electric Station (W3SES), LDEQ is tasked with offsite radiological monitoring and analysis and protective action recommendations. Recommendations are formulated in conjunction with technical accident information from Waterford 3 Steam Electric Station (W3SES).
- F. Protective action recommendations may be issued at the Alert, Site Area Emergency, or General Emergency Classification.
- G. Federal technical support will be called upon and coordinated through LDEQ.
- H. GOHSEP will activate the State Emergency Operations Center (EOC) when required and coordinate all State resources through the appropriate agencies of the State.
- I. Federal operational support will be called upon and coordinated through GOHSEP.
- J. The Governor may preempt local governments as primary legal authority if a State "Declaration of Emergency" is issued.
- K. In the event of an accident, the Waterford 3 parish (W3P) governments, which are responsible for the safety and welfare of their citizens, may implement this response plan as conditions warrant.
- L. An accident at Waterford 3 Steam Electric Station (W3SES) may require protective actions involving portions of both of the Waterford 3 Parishes.
- M. All available Parish resources will be utilized as necessary. If Parish resources are expended and/or the situation involves other jurisdictions, State emergency plans will be implemented to provide additional resources and support.
- N. Privately owned vehicles will be the primary mode of transportation if evacuation is necessary.
- O. Emergency Planning Zones (EPZs) for both the Plume Exposure (10-mile) and Ingestion Exposure (50-mile) Pathways are established. The Plume Exposure Pathway (10-mile) EPZ is further divided into zones of 2, 5 and

10 miles and into Protective Action Sections (PAS). This partitioning of the 10-mile EPZ allows for maximum flexibility of decision making for protective response measures. Within the Ingestion Exposure Pathway (50-mile) EPZ, all probable routes of food chain contamination (e.g. food crops, livestock, drinking water, etc.) will be identified.

- P. In the event of an evacuation at W3SES, the St. Charles Parish Sheriff's Department is responsible for traffic control per St. Charles Parish Radiological Emergency Implementing Procedure: Law Enforcement Services.

III. Administration

A. Responsibility

The responsibility for the development, maintenance and revision of this Attachment lies with the W3P Offices of Emergency Preparedness, in conjunction with LDEQ and GOHSEP.

B. Review and Revision

All information contained within this Attachment will be reviewed annually by the W3P Offices of Emergency Preparedness. Any additions/deletions or recommendations will be forwarded to LDEQ for review. Proposed revisions to this Attachment will be considered by the W3P, LDEQ, GOHSEP and EOI. Upon acceptance the new information will be incorporated into this Attachment and all revised or new material will then be distributed as appropriate. Revised pages will be dated and marked to show changes have been made.

C. Distribution

The Parish Director of Emergency Preparedness (DEP) has the authority to distribute uncontrolled copies of this Attachment to Parish or emergency staff officials and others with responsibility for its implementation. The DEP is, in addition, responsible for maintaining a complete and current Parish distribution list. LDEQ is responsible for the controlled distribution of the LPRRP to include this Attachment as appropriate.

IV. Chapters

CHAPTER 1

Emergency Classification System

A. Purpose

A gradation of Emergency Classifications (ECLs) based on Emergency Action Levels (EALs), as established by NRC and FEMA in their planning guidance document, "Criteria for Preparation and Evaluation of Radiological Emergency response Plans and Preparedness in Support of Nuclear Power Plants," (NUREG-0654 FEMA-REP-1, Rev. 1), is utilized to provide for early and prompt notification of an accident to the W3P response organizations and to assure that adequate opportunity is provided for preparatory actions prior to any offsite impact of an accident.

B. Concept of Operations

1. Waterford 3 Steam Electric Station (W3SES) is responsible for the initial recognition and classification of the emergency condition, and for notification of State and Parish organizations.
2. The ECL (See Tab A - Emergency Classification Level) will be included with the initial and all follow-up notification message information provided to the W3P.
3. The W3P will take initial preparatory actions consistent with the guidelines for their emergency response organizations established in their plans (Enclosures) and implementing procedures. Subsequent actions will be taken in accordance with the ECL, the technical information from Waterford 3 Steam Electric Station (W3SES), and the protective response recommendations of LDEQ.

TAB A TO CHAPTER 1

Emergency Classification Level

A. Notification of Unusual Event

1. Description

Unusual events are in process or have occurred which indicate a potential degradation of the level of safety of the plant or indicate a security threat to facility protection. No releases of radioactive material requiring off-site response or monitoring are expected unless further degradation of safety systems occurs

2. Purpose

Purpose of offsite notification is to (1) assure that the first step in any response later found to be necessary has been carried out, (2) bring the operating staff to a state of readiness, and (3) provide systematic handling of unusual events information and decision-making.

B. Alert

1. Description

Events are in process or have occurred which involve an actual or potential substantial degradation, of the level of safety of the plant or a security event that involves probable life threatening risk to site personnel or damage to site equipment because of intentional malicious dedicated efforts of a hostile act. Any releases are expected to be limited to small fractions of the EPA Protective Action Guideline exposure levels.

2. Purpose

Purpose of offsite alert is to (1) assure that emergency personnel are readily available to respond if situation becomes more serious or to perform confirmatory radiation monitoring if required, and (2) provide offsite authorities current status information.

C. Site Area Emergency

1. Description

Events are in process or have occurred which involve an actual or likely major failures of plant functions needed for protection of the public or security events that result in intentional damage or malicious acts; (1) toward site personnel or equipment that could lead to the likely failure of

* "Criteria for Preparation and Evaluation of Radiological Emergency Response Plans and Preparedness in Support of Nuclear Power Plants" (NUREG-0654 FEMA-REP-1, Rev. 1) November, 1980.

or; (2) prevents effective access to equipment needed for the protection of the public. Any releases are not expected to result in exposure levels which exceed EPA Protective Action Guideline exposure levels beyond the site boundary.

2. Purpose

Purpose of the site area emergency declaration is to (1) assure that response centers are manned, (2) assure that monitoring teams are dispatched, (3) assure that personnel required for evacuation of near-site areas are at duty stations if situation becomes more serious, and (4) provide consultation with offsite authorities.

D. General Emergency

1. Description

Events are in process or have occurred which involve actual or imminent substantial core degradation or melting with potential for loss of containment integrity or security events that result in an actual loss of physical control of the facility. Releases can be reasonably expected to exceed EPA Protective Action Guideline exposure levels off-site for more than the immediate site area.

2. Purpose

Purpose of the general emergency declaration is to (1) initiate predetermined protective actions for the public, (2) provide continuous assessment of information from licensee and offsite organization measurements, (3) initiate additional measures as indicated by actual or potential releases, (4) provide consultation with offsite authorities and (5) provide updates for the public through offsite authorities.

CHAPTER 2

Public Education and Information

A. Purpose

To develop an ongoing educational program related to emergency response for Waterford 3 Steam Electric Station (W3SES) and, in the event of a radiological accident, a procedure for the timely release of accurate and pertinent information to the public and the news media.

B. Concept of Operations

1. Educational Program:

LDEQ will coordinate with GOHSEP, the W3P, and Waterford 3 in an ongoing annual program to acquaint the public on how they will be notified of an accident at Waterford 3 and what their actions should be.

- a. This information will include educational information on radiation, contact for additional information, protective measures including evacuation routes, reception centers, sheltering, respiratory protection, as well as the special needs of the handicapped.
- b. The principal means of distributing this information will be through a mailing directed at individual residences and commercial businesses throughout the 10-mile EPZ. Information for the transients will be made available by means of a poster distributed by the W3P to industries, hotels, motels, public buildings, and retail outlets in the 10-mile EPZ. LDEQ, GOHSEP, the W3P, and Waterford 3 will conduct an annual program to acquaint the news media with the emergency plan, radiation information, and points of contact for the release of public information.

2. Information Release:

- a. A public information program, designed for persons living, working and traveling in risk areas of the W3P, will be developed and annually updated by LDEQ and GOHSEP with Parish assistance.
- b. Emergency public information will be available in the "Information Brochure" and is intended to support information from the Emergency Alert System (EAS/formerly EBS).⁷
- c. The W3SES Parishes will release EAS messages directly to the assigned local EAS radio stations. WWL 870-AM/WLMG 101.9-FM

⁷The terminology is effective Nov, 10, 1994. It must be implemented by July, 1997 based on FCC Guidelines.

will serve as the primary EAS station for St. Charles Parish and for St. John Parish. Also serving as EAS radio stations are 1370-AM (St. Charles) and WWL 105.3-FM. If problems with back-up power should occur at the primary station, these two stations will serve as alternates.

- d. The Alert Notification System will be activated by the W3P DEP under the direction of the Parish Presidents when conditions at Waterford 3 Steam Electric Station (W3SES) warrant protective actions for the general public. Once the decision is made to activate the Alert Notification System, the DEP will verify that the EAS is on standby and ready to broadcast prepared messages.
- e. Continuing information will be provided through the EAS, during the emergency, to inform the public of the nature and severity of the accident and protective actions.
- f. The W3P DEP will be responsible for recommendations and support to LDEQ and GOHSEP for the advance development of prepared messages designed for dissemination via EAS during an emergency. These messages provide specific emergency instructions based on the protective actions taken (See Tab A - EAS Message Listing').
- g. The Parish President or his designated Public Information Officer (PIO) will serve as the Parish spokesperson and will release emergency public information to the news media, at the time of an accident.
- h. For more information on the exchange of information, see:
 - i. St. Charles Parish Emergency Plan Implementing Procedure: Emergency Operations Center: Attachment 7 – Decision Making
 - ii. St. John the Baptist Parish Emergency Operations Plan: Standard Operation Procedure: Annex N [ESF #12] Public Information
 - iii. EPP-423: Emergency Planning Procedure: Joint Information Center Activation, Operation, and Deactivation.
- i. News releases will be shared between the W3P, State, and facility public information.
- j. The W3P DEP will direct the news media to the EOI Joint Information Center.
- k. Rumor Control/Response will be primarily accomplished through the EOI Rumor Control Center. The Rumor Control Center operates under the direction of the Waterford 3 Joint Information Center. Parish, State and utility PIOs will provide information as necessary to

the Rumor Control Center.

For more information on rumor control, see EPP-423: Emergency Planning Procedure: Joint Information Center Activation, Operation, and Deactivation

TAB A TO CHAPTER 2

EAS Message Listing

1. Initial Notification
2. St. Charles Protective Action
3. St. John Protective Action
4. Reentry
5. Precautionary Actions for Farmers, Farm Workers, Food Processors and Food Distributors
6. Emergency Actions for Farmers, Farm Workers, Food Processors and Food Distributors

*Actual messages have been developed as part of the implementing procedures and are included with them.

CHAPTER 3

Accident Assessment

A. Purpose

The following establishes the process by which an accident at Waterford 3 Steam Electric Station (W3SES) will be assessed to determine if protective action(s) is necessary, and if so the method in which the protective action(s) would be recommended to the W3P.

B. Concept of Operation

Accident Assessment is a State Responsibility

1. Chapter 6 of the LPRRP assigns responsibility for accident assessment solely to the Louisiana Department of Environmental Quality (LDEQ). Assessment of a radiological accident at W3SES will be made based on technical information received from W3SES which includes but is not limited to: plant status, emergency classification, time of initiation of release (if any), type of release, actual or projected dose rates, meteorological conditions, and predicted duration of existing conditions. In conjunction with W3SES, protective action recommendations will be formulated and transmitted to the W3P as appropriate.
2. The Plume Exposure Pathway (10-mile) EPZ has been partitioned into 16 Protective Action Sections (PASs). The PASs have been delineated for ease of public recognition on the basis of jurisdictional boundaries, roads and intersections, bodies of water and other natural landmarks, where possible, and also corresponding to approximate distances of 0-2, 2-5 and 5-10 miles from W3SES. Protective action recommendations from LDEQ will be given to the W3P in terms of these PASs (refer to Appendix B, Tab A).
3. LDEQ is assigned the responsibility for radiological monitoring, sample collection, and analyses and will supply and maintain its own specialized equipment and modes of transportation.
4. The W3P have no responsibility in accident assessment but are expected to carry out protective response measures based on the recommendations from LDEQ. Protective action recommendations are issued by Waterford 3 Steam Electric Station (W3SES) directly to the Parishes and State agencies concurrently, but the State may separately agree or disagree with the recommendation issued by W3SES.
5. Actual protective action(s) taken by the W3P is solely the responsibility of the individual Parish governments.

CHAPTER 4

Protective Response for the Ingestion Exposure Pathway (50-mile) Emergency Planning Zone

A. Purpose

To establish what degree of involvement the Parishes of Louisiana which comprise the Ingestion Exposure Pathway (50-mile) EPZ will have in the protective response measures of the State of Louisiana.

B. Concept of Operation

1. All those Parishes comprising the Ingestion Exposure Pathway (50-mile EPZ) will be notified at the time of an accident at Waterford 3 Steam Electric Station (W3SES) (see Tab A - Parish Listing for the Ingestion Exposure Pathway (50-mile EPZ).
2. LDEQ will directly notify the W3P of any protective response recommendations concerning food, water, animal feed or livestock.
3. GOHSEP will notify the Parishes (other than W3P) within the 50-mile EPZ of the protective response recommendations concerning food, water, animal feed or livestock. GOHSEP may also utilize an EAS message to notify the agricultural community of information on the protection of livestock and crops during an accident.
4. LDEQ will coordinate with the respective local officials all sampling and monitoring activities in the 50-mile EPZ.
5. The decision to relax protective action(s) within the Ingestion Exposure Pathway (50-mile EPZ) will be made using the same criteria and decision procedures as the recommendation(s) to implement the initial action(s) (refer to the LPRRP, Chapter 8, Protective Response for the Ingestion Exposure Pathway EPZ).

TAB A TO CHAPTER 4

Parish Listing for the Ingestion Exposure Pathway (50-mile) EPZ

50-mile EPZ is comprised of all or part of 21 Louisiana Parishes:

- Ascension
- Assumption
- East Baton Rouge
- Iberia
- Iberville
- Jefferson
- Lafourche
- Livingston
- St. Bernard
- St. Charles*
- St. Helena
- St. James
- St. John the Baptist*
- St. Martin
- St. Mary
- St. Tammany
- Orleans
- Plaquemine
- Tangipahoa
- Terrebonne
- West Baton Rouge

* Also within Plume Exposure Pathway (10-mile EPZ).

CHAPTER 5

Radiological Exposure Control

A. Purpose

To establish methods and procedures for the protection of the public and emergency workers in the W3P from radiological exposure in the event of a radiological accident at Waterford 3 Steam Electric Station (W3SES).

B. Concept of Operation

1. General
 - a. LDEQ will offer technical advice and protective action recommendations to the W3P, who will implement appropriate radiological exposure control measures. The W3P will report resource shortages and operational support requirements to GOHSEP.
 - b. At the time of a radiological accident at Waterford 3 Steam Electric Station (W3SES), LDEQ will make recommendations for protective action(s) for members of the general public and emergency workers to the W3P Parish Presidents. These recommendations will be based on the following:
 - i. Guidance from the U. S. Environmental Protection Agency (EPA) as given in the "Manual of Protective Action Guides and Protective Actions for Nuclear Accidents" (EPA – 400-R-92-001, revised May, 1992).
 - ii. Information from Waterford 3 Steam Electric Station (W3SES) concerning the nature of the accident, radiological consequences (if any), protective action recommendations, duration of any radiological release and its potential offsite doses, meteorological conditions and updates on plant status. (For a complete listing of information received from Waterford 3 Steam Electric Station (W3SES) refer to Chapter 2 of the LPRRP.)
 - iii. 'In house' (and/or independent) dose projections determined for any radiological release.
 - iv. Planning guidance for the W3P as outlined in the LPRRP (Chapter 6) and this Attachment.
 - c. All radiological monitoring and decontamination for members of the public will take place at reception centers which will be established outside the 10-mile EPZ. Persons showing on

their body a reading greater than 0.1 mR/hour above background on a survey meter, greater than 300 cpm, or persons setting off the alarm while surveyed with a portal monitor, will be considered contaminated, and will be processed through decontamination procedures. St. Charles and St. John the Baptist Parishes will not be responsible for the decontamination of members of the general public. Note: Some facilities use action levels of greater than 100 cpm above background or 2X background.

For more information on reception center requirements, see LPRRP, Chapter 9, Section IV.B.

Parish/Reception Center	Procedure
East Baton Rouge Parish	
Baton Rouge River Center	Emergency Response Procedure for Fire Department
	Emergency Response Procedure for Reception Centers: Baton Rouge River Center
Jefferson Parish	
Alario Center	Reception Center Manager Checklist
	Checklist 1: Officer in Charge
	Checklist 2: Vehicle Monitor
	Checklist 3: Personnel Monitor
Pontchartrain Center	Checklist 4: Decontamination Monitor
	Reception Center Manager Checklist
	Checklist 1: Officer in Charge
	Checklist 2: Vehicle Monitor
Lafourche Parish	Checklist 3: Personnel Monitor
	Checklist 4: Decontamination Monitor
	Reception Center Manager Checklist
	Checklist 1: Officer in Charge
Central Lafourche High School	Checklist 2: Vehicle Monitor
	Checklist 3: Personnel Monitor
	Checklist 4: Decontamination Monitor
	Reception Center Manager Checklist
Tangipahoa Parish	
Hammond High School	Checklist 1: Officer in Charge
	Checklist 2: Vehicle Monitor
	Checklist 3: Personnel Monitor
	Checklist 4: Decontamination Monitor

- d. Arrangements will be made for the distribution and use of KI at the time of an accident. The use of KI as a thyroid blocking agent will be considered for emergency workers and for institutionalized persons who may not be able to evacuate immediately. (Refer to Chapter 9 of the LPRRP, Radiological Exposure Control.)
- e. The dosimetry and survey meters which may be used to support a radiological emergency operation will be inspected, inventoried and functionally checked annually as well as after each use under the supervision of the Parish Radiological Officer. Reserves to replace those items of equipment removed for calibration or repair will be supplied by GOHSEP.

2. Emergency Workers

- a. Emergency Workers (defined as those persons who are engaged in public service activities and as such voluntarily place themselves under different criteria for protection than the general public) will be equipped with pocket dosimeters and a permanent record dosimeter (such as a TLD) at the time of an accident (see Tab A - Resource Requirements for Radiological Exposure Control).

If pocket dosimetry is issued to emergency workers, they must be equipped with a "low range" and a "high range" dosimeter. For example, a 0-200 mR pocket dosimeter and a 0-5 R pocket dosimeter could be distributed.

An electronic dosimeter can be substituted for the pocket dosimeters, reading both a low and high range.

- b. Emergency workers, as volunteers, will be advised of risks and trained in the proper use of dosimeters, limitation of exposure (time, distance, shielding) and the use, administration, limitations and precautions of KI.
- c. Emergency workers are instructed to read dosimeters every 30 minutes.
- d. St. Charles and St. John the Baptist Parish Presidents will be responsible for authorizing their emergency workers and members of the general public (e.g., farmers who voluntarily wish to enter a risk area) to incur exposures in excess of the EPA General Public Protective Action Guides. Authorization will be considered after consultation with LDEQ.

For more information on emergency worker exposure exceeding EPA Guidelines see:

- St. Charles Parish Emergency Plan Implementing

Procedure: Emergency Operations Center:
Attachment 7 – Decision Making and Radiological
Exposure Control

- St. John the Baptist Parish Emergency Operations Plan: Emergency Operations Center Standard Operation Procedure: Attachment 7 – Decision Making and Radiological Exposure Control
- e. Consideration for authorization of exposure beyond 5 R Total Effective Dose Equivalent (TEDE) for whole body and/or 25 R Committed Dose Equivalent (CDE) for thyroid will be consistent with the following:

DOSE LIMITS* (TEDE)	ACTIVITY	CONDITIONS
> 5 R	Protecting Valuable Property	Lower dose not practicable
> 10 R	Life saving or Protection of large populations	Lower dose not practicable
> 25 R	Life saving or Protection of large populations	Only on a voluntary basis to persons fully aware of the risks involved

- f. Arrangements will be made for decontamination of emergency workers at decontamination centers outside of the Plume Exposure Pathway (10-mile) EPZ, and at pre-determined locations in un-affected Parishes. Provisions will be made at these centers to survey and decontaminate emergency workers and to transport them to medical facilities for further treatment of wounds or contamination if necessary. Persons showing on their body a reading greater than 0.1 mR/hour above background on a survey meter, greater than 300 cpm, or persons setting off the alarm while surveyed with a portal monitor, will be considered contaminated, and will be processed through decontamination procedures. Note: Some facilities use action levels of greater than 100 cpm above background or 2X background.
- Contaminated supplies, instruments and equipment used by emergency workers will be stored at these sites until

* EPA 400-R-92-001 "Manual of Protective Action Guides and Protective Actions for Nuclear Incidents"
Table 2-2

arrangements for their proper surveillance and decontamination or disposal can be made. Decontamination action levels for objects are set the same as those for emergency workers, as stated in the previous paragraph.

- g. Emergency workers will be responsible for completing dosimeter report forms and giving them to the Parish Radiological Officer (or his designee) at the conclusion of the emergency.

For a sample dosimeter report form, see:

- St. Charles Parish “Individual Dosimeter Report Form”
- St. John the Baptist Parish Emergency Operations Plan Standard Operation Procedure: Radiological Exposure Control, Attachment 4a “Individual Dosimeter Report Form”

- h. Emergency workers’ permanent record dosimeters (TLDs) will be turned in to W3SES for laboratory analysis and report.

It will be required that EW TLDs are turned in at the end of the event. However, TLDs can be returned to be read at any time during the incident.

- i. W3SES provides the W3P with 144 KI packets of 14 tablets each, for a total of 2016 tablets per parish. The utility is responsible for maintaining an adequate supply of unexpired tablets.

For more information on distribution of KI, see:

- St. Charles Parish Emergency Plan Implementing Procedure: Radiological Exposure Control
- St. John the Baptist Parish Emergency Operations Plan Standard Operation Procedure: Radiological Exposure Control

TAB A TO CHAPTER 5

Resource Requirements for Radiological Exposure Control

1. Emergency Workers
 - a. CD V-742 Dosimeter (Range: 0-200R) or equivalent
 - b. CD V-730 Dosimeter (Range: 0-20R) or equivalent
 - c. CD V-138 Dosimeter (Range: 0-200mR) or equivalent (state only)
 - d. Digital Dosimeter (Range: 0.1mR-100R) or equivalent
 - e. Arrow Tech Model 725 (0-5R)
 - f. Thermoluminescent Dosimeter (TLD) or Film Badge
 - g. 'Individual Dosimeter Report Forms'
2. Reception/Survey/Decontamination Center
 - a. CD V-700 Geiger – Mueller survey meter (Range: 0-50mR/hr) or equivalent
 - b. CD V-715 Geiger – Mueller survey meter (Range: 0-500R/hr) or equivalent
 - c. Ludlum 3A Survey Meter
 - d. "Reception Log" Form
 - e. Shower facilities (male/female)
 - f. Provisions for obtaining a change of clothing (for contaminated individuals)
 - g. Storage/isolation area for contaminated material(s)
 - h. Vehicles/drivers for contaminated individual transport
 - i. 'Contamination Survey Decontamination Log' Forms
3. For more information on emergency kit information, see:
 - a. St. Charles Parish Emergency Plan Implementing Procedures, Radiological Exposure Control
 - b. St. John the Baptist Parish Emergency Operations Plan Standard Operation Procedure: Radiological Exposure Control

CHAPTER 6

Reentry, Recovery, and Return

A. Purpose

To establish the methods used for the relaxation of any protective measures and the initiation of reentry into evacuation and/or exclusion areas. Also, to identify the means and methods necessary to support reentry and recovery activities.

B. Concept of Operation

1. Relocation

- a. LDEQ will recommend the extension or further restriction of protective measures in affected areas in both the Plume Exposure Pathway (10-mile) and Ingestion Exposure Pathway (50-mile) EPZs to the W3P Presidents. These measures may include the temporary or permanent relocation of households. (Refer to Chapter 11 of the LPRRP, Reentry and Recovery.)
- b. The W3P responsibility for the relocation process will be handled by the same agencies and organizations that implemented protective actions.

2. Reentry

- a. LDEQ will recommend the temporary entry into a restricted zone under controlled and monitored conditions to the W3P Presidents. (Refer to Chapter 11 in the LPRRP, Reentry and Recovery.)
- b. The W3P responsibility for the reentry process will be handled by the same agencies and organizations that implemented protective actions.

3. Return

- a. LDEQ will recommend the relaxation of protective measures to allow the reoccupation of cleared areas for unrestricted residence or use to the W3P Presidents. (Refer to Chapter 11 in the LPRRP, Reentry and Recover.)
- b. The W3P responsibility for the return process will be handled by the same agencies and organizations that implemented protective actions.

4. Recovery

- a. The recovery phase of emergency operations will commence when the emergency has been terminated and with the relaxation of any protective measures. Recovery will extend for a period of time as determined by the severity of the accident.
- b. Recovery actions will be initiated by the W3P on the recommendation of LDEQ.
- c. Services provided as part of the recovery phase will be coordinated among State, Parish and volunteer agencies to include social, health, economic and insurance-related assistance as required in accordance with the Louisiana Emergency Operations Plan.

CHAPTER 7

Exercises and Drills

A. Purpose

To develop a program of exercises and drills to regularly evaluate the adequacy of the W3P plans and level of preparedness. It is the intent of these exercises and drills that areas not adequately addressed and/or needing improvement be identified.

B. Concept of Operations

1. Exercises

- a. A full participation exercise refers to an exercise in which sufficient numbers of State and local government personnel are engaged: 1) to verify the capability to respond to the actions required by the accident scenario; 2) to test the integrated capability to adequately assess and respond to an accident at a commercial nuclear power plant; 3) to test the implementation of observable portions of State and/or local plans.
- b. Each of the W3P will fully participate in an exercise for Waterford 3 Steam Electric Station (W3SES) at least every two years. In addition, W3P will participate in an Ingestion Pathway Exercise once during each eight year cycle. Participation will be such that all major elements of the plans and preparedness organizations are tested within a eight-year period.
- c. To the extent possible, every effort will be made to vary scenarios, including the weather conditions simulated, time of day and season of year* for each exercise.
- d. A remedial exercise is an exercise that tests deficiencies of previous joint exercises that are considered significant enough to impact on the public health and safety.

2. Critique and Exercise Evaluation

- a. Arrangements will be made for observation and critique of each exercise by representatives of Parish, State and Federal government and the media as appropriate to the scale of the

* To include provisions for off-hours and unannounced exercises once every six years.

exercise.

- b. The critique, to be conducted as soon as practicable after the exercise, will result in a formal evaluation of the ability of each organization to respond as called for in the Plan (LPRRP/Attachment 1).
- c. Parish governments, in conjunction with LDEQ and GOHSEP, will review Parish level plans (Enclosures) and implementing procedures to resolve deficiencies identified in exercise critiques and evaluations.

3. Drills

- a. Communication Drills
 - i. Communication drills will test both the adequacy of communications links and the response agency understanding of emergency classification and message content.
 - ii. Communications between Waterford 3 Steam Electric Station (W3SES), the W3P and the State will be tested monthly.
 - iii. Communications between Waterford 3 Steam Electric Station (W3SES), the W3P, and the State will be tested annually (may be during an exercise).
 - iv. Communications between Federal emergency response organizations and the State of Louisiana will be tested quarterly.
- b. Medical Emergency Drills
 - i. A medical emergency drill will involve the transportation and treatment of a simulated contaminated injured person by Parish or local support services.
 - ii. Medical emergency drills involving the designated primary local hospital will be conducted as required by FEMA. The offsite portions of the medical drill may be performed as part of the required biennial exercise.
 - iii. In general, there is no requirement for parish government involvement in medical drills, other than being included in standard notification procedures. When reception centers are exercised (as during full scale biennial exercises), the capability to direct “contaminated injured” members of the general public to the appropriate hospital may also be tested.

- c. Radiological Monitoring Drills
 - i. An annual radiological monitoring drill will involve the collection and simulated analyses of sample media such as water, soil, vegetation and air as well as provisions for communications and record-keeping.
 - ii. The W3P will participate as requested with the State in the radiological monitoring drills held for Waterford 3 Steam Electric Station (W3SES).
- d. Critique and Drill Evaluation
 - i. Each drill will be supervised and evaluated by a qualified drill instructor(s).
 - ii. The drill instructor(s) will be responsible for addressing any resulting drill deficiencies in a timely and appropriate manner.

4. Scenarios

- a. Development and Design
 - i. The State, in conjunction with the W3P and Waterford 3 Steam Electric Station (W3SES), will develop exercise and drill scenarios based on NRC and FEMA guidance.
 - ii. Exercises and drills will be designed to allow free-play for decision-making by the principal response organizations. Scenarios will include but not be limited to the following criteria:
 - 1) The basic objective(s) of each exercise or drill.
 - 2) The date(s), duration, location(s) and participating organizations and/or individuals.
 - 3) The events and/or items to be simulated.
 - 4) A time schedule of real and simulated initiating events.
 - 5) A narrative summary describing the conduct of the exercise or drill to include such things as simulated casualties, offsite fire department assistance, rescue of personnel, use of protective clothing, deployment of Field

Monitoring Teams, and public information activities (e.g., EAS message transmission).

6) Arrangements for providing plan and scenario information material, in advance, to official observers.

b. Critique and Scenario Evaluation

- i. Each scenario will be evaluated for its success in accomplishing its intended purpose and its contribution to the success or failure of the exercise or drill.
- ii. The review of the scenario will consider such things as the effect of controllers versus the use of cue cards; whether to follow a sequence of events time, scenario time, or real time; time compression; simulation; and other issues as they relate to the success and effectiveness of the scenario.

CHAPTER 8

Radiological Emergency Response Training

A. Purpose

To establish guidelines and requirements for a radiological emergency response training program for the personnel of the W3P having a role in response to an accident at Waterford 3 Steam Electric Station (W3SES).

B. Concept of Operations

1. Utility Directed Training Programs – Offsite Support to Waterford 3 Steam Electric Station (W3SES)
 - a. Waterford 3 will provide site-specific emergency response training for those offsite emergency organizations which may be called upon to provide assistance onsite, through pre-established agreement, should the need arise.
 - b. Training will be provided for emergency response personnel, hospital employees, ambulance/rescue workers (paramedics), and sheriff and fire department personnel. It will include procedures for notification, basic radiation protection, and the specific roles of each support organization. For the support personnel who will enter the site, training will also include access procedures and the onsite individual to whom they would report for coordination of their support activities onsite.
 - c. For each primary and backup hospital designated to provide medical support for “contaminated injured” personnel, initial training and periodic retraining programs will be provided on evaluation and treatment of radiologically “contaminated injured” patients. Transportation providers will receive basic training in contamination control.
2. State Directed Training – Response Plan Implementation
 - a. LDEQ, in conjunction with GOHSEP, will provide for the training of the W3P personnel who will implement the radiological emergency response plans.
 - b. Personnel who will receive training on radiological emergency response include the following: DEP, staff of the emergency response organizations (EOC staff), sheriffs and deputies, security personnel, medical support personnel (offsite only), communications and transportation personnel, mutual aid

organizations and any fire fighting, first aid and rescue personnel not trained by the "Utility Directed" Program.

- c. The initial training of response personnel will include an overview of radiological emergency response plans, including the facility, Waterford 3 Steam Electric Station (W3SES), State and Parish plans and procedures, basic information on radiation and radiation protection as well as more specific training on individual organization responsibilities and functions.
- d. Training for response personnel will be designed to enhance comprehension of the radiological emergency response plans and to orient personnel to their specific response function in relation to the overall protective response.
- e. In addition to plan orientation, those response personnel who will conduct activities within the Plume Exposure Pathway (10-mile) EPZ will receive training on radiological exposure control to include respiratory protection, protective clothing, dosimetry, management of total dose through exposure time limitations, reading and recording of personal dose data, decontamination procedures, and the use of potassium iodide (KI), a radioprotective drug.
- f. After the initial training program, retraining of personnel will be accomplished on an annual basis. The scope of this training will be essentially the same as the initial Program but will emphasize any new material and the reinforcement of original information.
- g. Mini-training sessions on detailed procedural aspects of the radiological emergency preparedness program will be conducted on an "as needed" basis with the W3P DEP (as stated in the W3SES plan) for individual members of the St. Charles and St. John the Baptist Parish EOC staffs or the staffs collectively. These sessions will consist of individual procedure clarification or integrated "table-top" exercises for the staff which will be general or designed to concentrate on areas of inadequacy.
- h. LDEQ, in conjunction with GOHSEP, will provide for initial and follow-up training of the W3P elected officials who will evaluate protective response recommendations and coordinate the implementation of Parish protective response measures.

- i. LDEQ and GOHSEP will coordinate with and assist the utility with medical support personnel training identified in paragraph 8.b.1.c above, to the extent that qualified instructors are available.

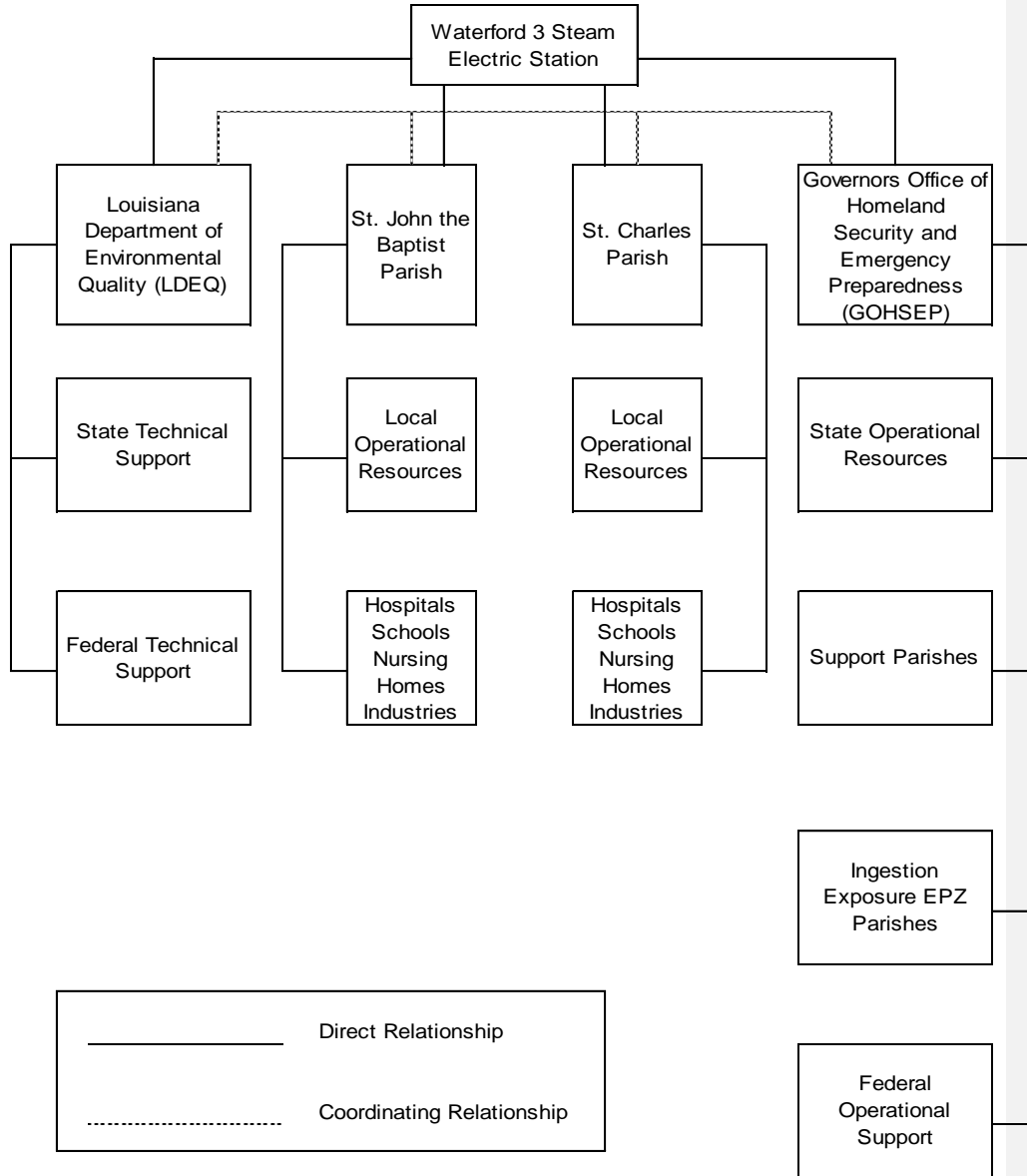
3. Federal Training Programs

4.

- a. FEMA and DOE offer several training courses for various aspects of radiological emergency planning, assessment and response. (Refer to Chapter 12 in the LPRRP, Training for more information pertaining to these courses).
- b. The W3P will designate appropriate Parish personnel to attend these courses, as available, to enhance overall plan development and strengthen specific aspects of emergency response through detailed technical training.

APPENDIX A
Accident Notification and Coordination

TAB A TO APPENDIX A
ACCIDENT NOTIFICATION AND COORDINATION



TAB B TO APPENDIX A

NOTIFICATION MESSAGE FORM

1. THIS IS GRAND GULF WATERFORD 3 RIVER BEND WITH MESSAGE NUMBER F- _____
(OHL CODE NO.) _____

2. A. _____ / _____ B. COMM: _____ C. TEL NO. _____
(TIME/DATE) (NAME)

3. EMERGENCY CLASSIFICATION:
A. NOTIFICATION OF UNUSUAL EVENT C. SITE AREA EMERGENCY E. TERMINATED
B. ALERT D. GENERAL EMERGENCY

4. CURRENT EMERGENCY CLASSIFICATION DECLARATION/TERMINATION Time/Date: _____ / _____

5. RECOMMENDED PROTECTIVE ACTIONS:
A. No Protective Actions Recommended At This Time (Go to Item 6).
B. EVACUATE _____
 SHELTER _____

6. INCIDENT DESCRIPTION/UPDATE/COMMENTS:

7. REACTOR SHUT DOWN? NO YES Time/Date: _____ / _____

8. METEOROLOGICAL DATA:
A. Wind Direction FROM _____ Degrees at _____ MPH
B. Sectors Affected (A-R): _____
C. Stability Class (A-G): _____
D. Precipitation: None Rain Sleet Snow Hail Other _____

9. RELEASE INFORMATION:
A. No RELEASE (Go to Item 13)
B. A RELEASE is occurring BELOW federally approved operating limits
C. A RELEASE is occurring ABOVE federally approved operating limits
D. A RELEASE OCCURRED BUT STOPPED
E. Release started at _____ (time) Release stopped at _____ (time)
Release duration _____ hrs. (actual or expected)

10. TYPE OF RELEASE:
A. Radioactive Gases B. Radioactive Airborne Particulates C. Radioactive Liquids

11. RELEASE RATE:
A. NOBLE GASES _____ Ci/s B. IODINES _____ Ci/s

12. ESTIMATE OF PROJECTED OFFSITE DOSE:
A. Projections for _____ hours based on: Field Data Plant Data Default Data
B. (TEDE) WB DOSE COMMITMENT (mRem) C. (CDE) THYROID DOSE COMMITMENT (mRem)
Site Boundary _____ 5 miles _____ Site Boundary _____ 5 miles _____
2 miles _____ 10 miles _____ 2 miles _____ 10 miles _____

13. MESSAGE APPROVED BY: _____ TITLE: _____

APPENDIX B

Plume Exposure Pathway (10-mile) EPZ Maps

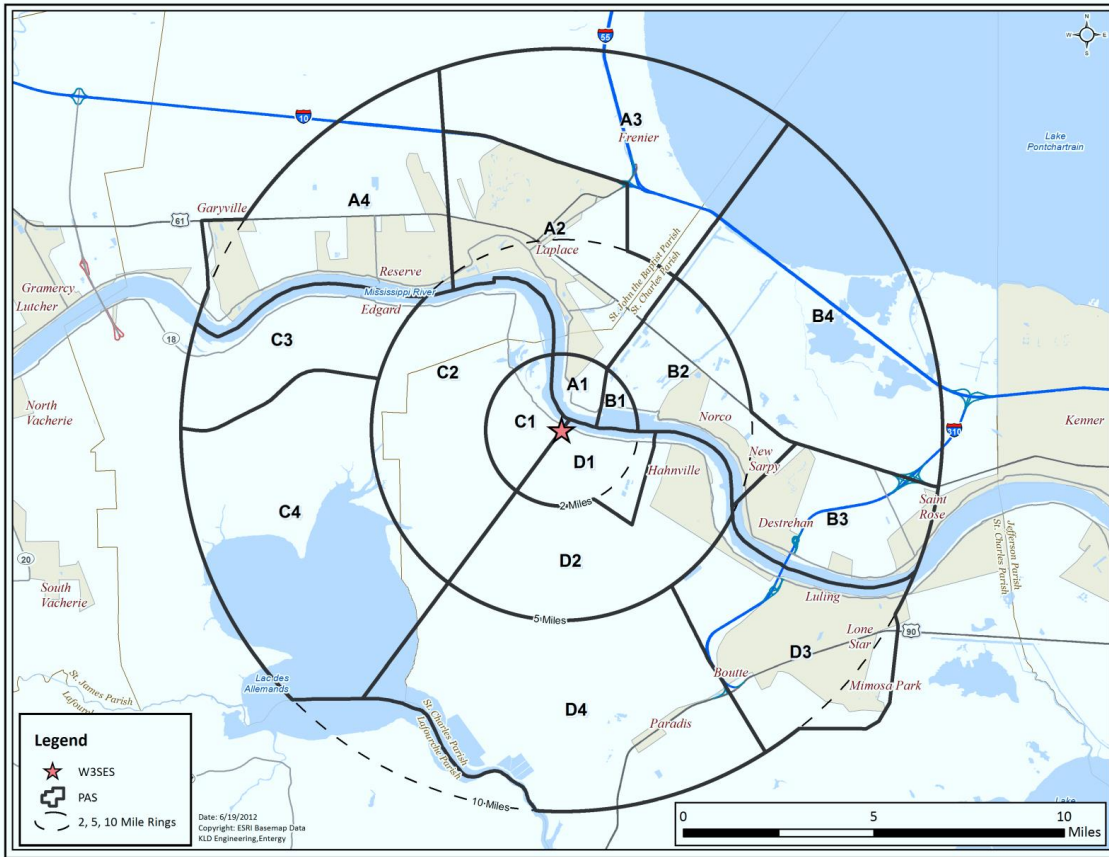
TAB A TO APPENDIX B

Plume Exposure Pathway (10-mile) EPZ Map



TAB B TO APPENDIX B

Protective Action Sections (PASs) Within the 10-mile EPZ for Waterford 3 Steam Electric Station



TAB C TO APPENDIX B

**Permanent and Transient Populations within the 10-mile EPZ for
Waterford 3 Steam Electric Station**

- Table 1:** 2010 Permanent Resident Populations and Vehicles Within 10 miles of Waterford 3, by PAS
- Figure 1:** 2010 Resident Population Within 10 miles of Waterford 3, by Sector
- Table 2:** 2010 Transient Populations and Vehicles Within 10 miles of Waterford 3, by PAS

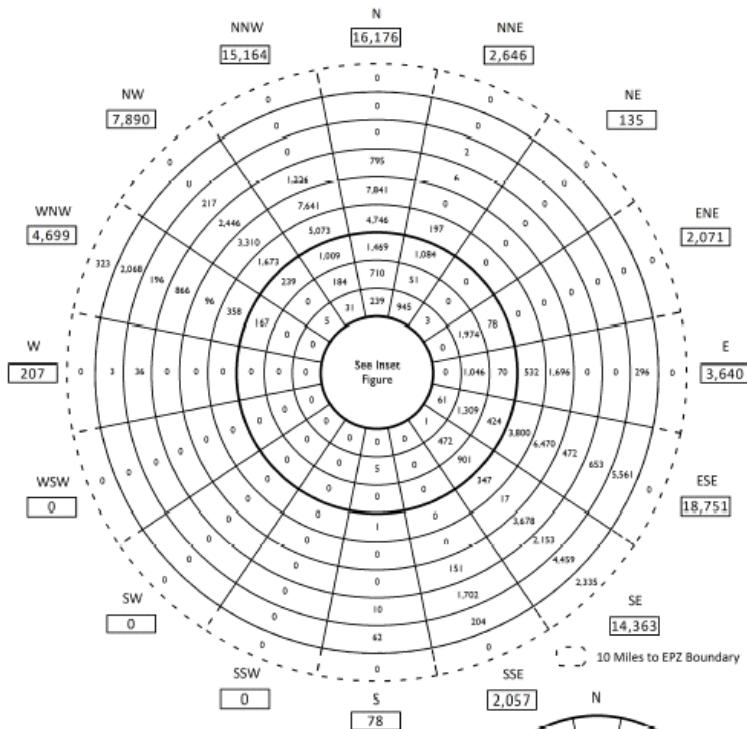
TABLE 1, TAB D TO APPENDIX B

2010 Permanent Resident Populations and Vehicles Within the 10 mile EPZ for Waterford 3 Steam Electric Station by Protective Action Section

PAS	2010 Population	2010 Resident Vehicles
A1	888	474
A2	30,167	16,090
A3	205	109
A4	12,398	6,616
B1	-	-
B2	4,518	2,419
B3	16,638	8,871
B4	-	-
C1	793	423
C2	803	430
C3	1,682	898
C4	-	-
D1	2	2
D2	3,083	1,650
D3	14,743	7,875
D4	1,957	1,044
TOTAL	87,877	46,901

FIGURE 1, TAB E TO APPENDIX B

2010 Resident Populations Within the 10 mile EPZ for Waterford 3 Steam Electric Station by Sector



Resident Population

Miles	Subtotal by Ring	Cumulative Total
0 - 1	406	406
1 - 2	1,276	1,682
2 - 3	1,285	2,967
3 - 4	5,751	8,718
4 - 5	5,441	14,159
5 - 6	16,727	30,886
6 - 7	27,071	57,957
7 - 8	9,640	67,597
8 - 9	4,969	72,566
9 - 10	12,653	85,219
10 - EPZ	2,658	87,877
Total		87,877

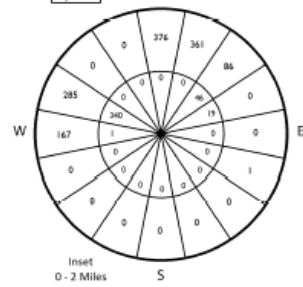


TABLE 2, TAB F TO APPENDIX B

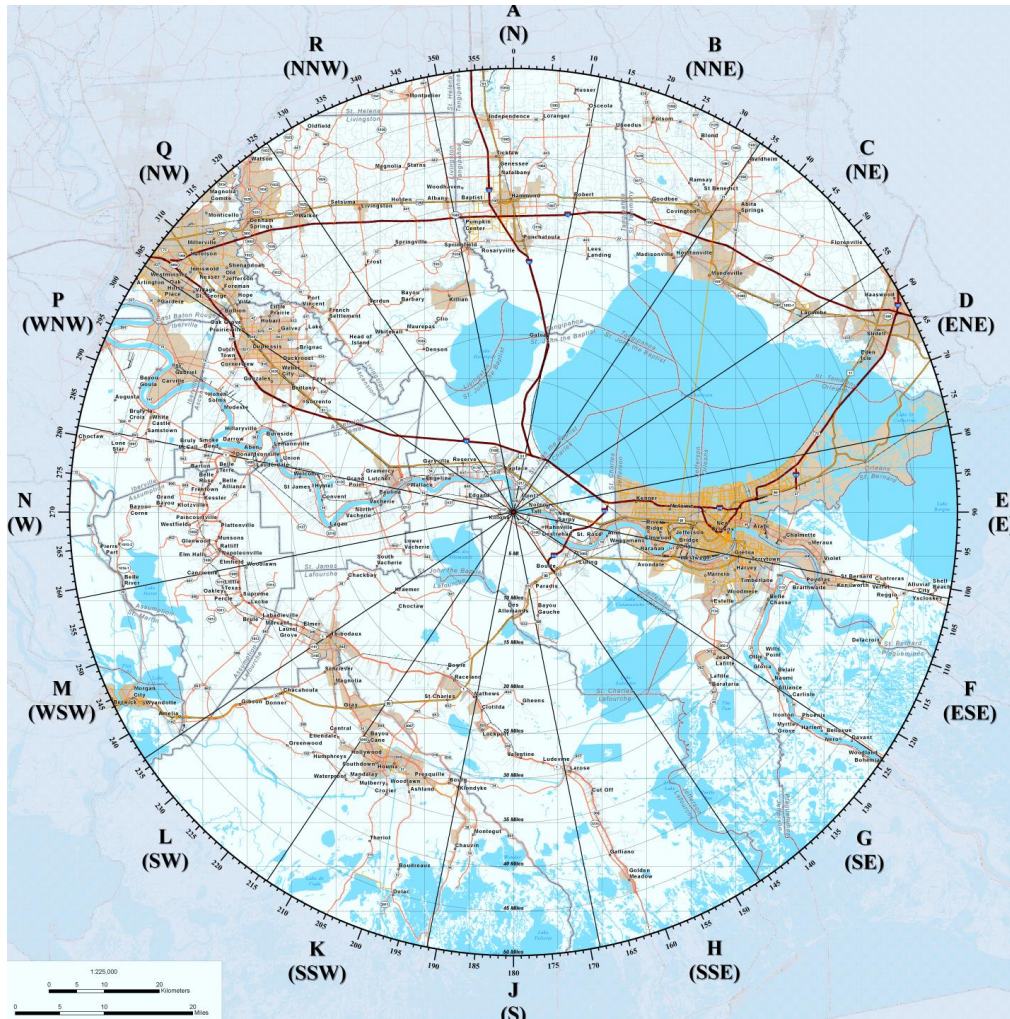
**2010 Transient Populations and Vehicles Within the 10 mile EPZ for
Waterford 3 Steam Electric Station by Protective Action Section**

PAS	Transients	Transient Vehicles
A1	-	-
A2	1,948	720
A3	296	74
A4	-	-
B1	-	-
B2	-	-
B3	-	-
B4	-	-
C1	-	-
C2	-	-
C3	-	-
C4	-	-
D1	-	-
D2	-	-
D3	634	212
D4	-	-
TOTAL	2,878	1,006

APPENDIX C
Ingestion Exposure Pathway (50-mile) EPZ Map

MAP 1, TAB A TO APPENDIX C

Ingestion Exposure Pathway (50-mile) EPZ Map



APPENDIX D
Evacuation Time Estimate

TAB A TO APPENDIX D

Evacuation Scenario Definitions

Scenarios	Season ¹	Day of Week	Time of Day	Weather	Special
1	Summer	Midweek	Midday	Good	None
2	Summer	Midweek	Midday	Rain	None
3	Summer	Weekend	Midday	Good	None
4	Summer	Weekend	Midday	Rain	None
5	Summer	Midweek, Weekend	Evening	Good	None
6	Winter	Midweek	Midday	Good	None
7	Winter	Midweek	Midday	Rain	None
8	Winter	Weekend	Midday	Good	None
9	Winter	Weekend	Midday	Rain	None
10	Winter	Midweek, Weekend	Evening	Good	None
11	Winter	Weekend	Midday	Good	Alligator Festival
12	Summer	Midweek	Midday	Good	Roadway Impact - Lane Closure on US 61 EB

¹ Winter means that school is in session (also applies to spring and autumn). Summer means that school is not in session.

TAB B TO APPENDIX D

Evacuation Routes for the 10-mile EPZ for Waterford 3 Steam Electric Station



TABLE 1 TO APPENDIX D

Time to Clear the Indicated Area of 90 Percent of the Affected Populations*

Scenario:	Summer (1)		Summer (2)		Summer (3)		Summer (4)		Summer (5)		Winter (6)		Winter (7)		Winter (8)		Winter (9)		Winter (10)		Winter (11)		Summer (12)		Region
	Midweek	Weekend	Midweek	Weekend	Midweek	Weekend	Midweek	Weekend	Midweek	Weekend	Midweek	Weekend	Midweek	Weekend	Midweek	Weekend	Midweek	Weekend	Midweek	Weekend	Midweek	Weekend	Midweek	Weekend	
R01	1:50	2:40	1:50	2:40	1:45	2:35	1:45	2:35	1:45	2:35	1:45	2:35	1:45	2:35	1:45	2:35	1:45	2:35	1:45	2:35	1:45	2:35	1:45	2:40	R01
R02	2:40	3:05	2:50	3:25	2:40	3:00	2:55	3:15	2:40	3:10	2:40	3:10	2:40	3:25	2:40	3:05	2:40	3:20	2:55	2:35	2:40	3:05	2:40	3:15	R02
R03	2:35	3:00	2:45	3:15	2:45	3:00	2:45	3:15	2:35	3:10	2:45	3:15	2:45	3:25	2:40	3:05	2:40	3:20	2:55	2:35	2:40	3:05	2:40	3:15	R03
Entire 2-Mile Region, 5-Mile Region and EPZ																									
2-Mile Region and Downwind to 5 Miles																									
R04	2:00	2:45	2:00	2:45	1:45	2:30	1:45	2:30	1:45	2:30	1:45	2:30	1:45	2:30	1:45	2:30	1:45	2:30	1:45	2:30	1:45	2:30	1:45	2:00	R04
R05	2:05	2:45	2:05	2:45	1:45	2:35	1:45	2:35	1:45	2:35	1:45	2:35	1:45	2:35	1:45	2:35	1:45	2:35	1:45	2:35	1:45	2:35	1:45	2:05	R05
R06	1:55	2:40	1:55	2:40	1:45	2:30	1:45	2:30	1:45	2:30	1:45	2:30	1:45	2:30	1:45	2:30	1:45	2:30	1:45	2:30	1:45	2:30	1:45	1:55	R06
R07	2:40	3:05	2:50	3:25	2:45	3:00	2:45	3:15	2:40	3:10	2:45	3:10	2:40	3:25	2:40	3:05	2:40	3:20	2:55	2:35	2:40	3:05	2:40	3:15	R07
R08	2:35	3:00	2:45	3:15	2:45	3:00	2:45	3:15	2:35	3:10	2:45	3:15	2:45	3:25	2:40	3:05	2:40	3:20	2:55	2:35	2:40	3:05	2:40	3:15	R08
R09	1:50	2:40	1:50	2:40	1:35	2:25	1:40	2:30	1:40	2:30	1:35	2:25	1:40	2:30	1:35	2:25	1:40	2:30	1:40	2:30	1:35	2:25	1:40	2:25	R09
2-Mile Region and Downwind to EPZ Boundary																									
R10	1:55	2:40	1:55	2:40	1:40	2:30	1:45	2:35	1:45	2:35	1:40	2:30	1:45	2:35	1:40	2:30	1:45	2:35	1:45	2:35	1:40	2:30	1:45	1:50	R10
R11	1:55	2:40	1:55	2:40	1:45	2:35	1:45	2:35	1:45	2:35	1:45	2:35	1:45	2:35	1:45	2:35	1:45	2:35	1:45	2:35	1:45	2:35	1:45	1:55	R11
R12	2:00	2:45	2:00	2:45	1:50	2:35	1:50	2:35	1:50	2:35	1:50	2:35	1:50	2:35	1:50	2:35	1:50	2:35	1:50	2:35	1:50	2:35	1:50	2:00	R12
R13	2:30	3:05	2:35	3:15	2:20	2:55	2:20	2:55	2:05	2:40	2:20	2:55	2:05	2:40	2:20	2:55	2:05	2:40	2:20	2:55	2:05	2:40	2:20	2:30	R13
R14	3:20	3:45	3:20	3:45	3:05	3:40	3:10	3:45	3:10	3:45	3:05	3:40	3:10	3:45	3:05	3:40	3:10	3:45	3:05	3:40	3:10	3:45	3:05	3:15	R14
R15	3:20	3:45	3:20	3:45	3:05	3:40	3:10	3:45	3:10	3:45	3:05	3:40	3:10	3:45	3:05	3:40	3:10	3:45	3:05	3:40	3:10	3:45	3:05	3:15	R15
R16	2:35	3:00	2:40	3:10	2:40	3:05	2:40	3:10	2:35	3:05	2:40	3:10	2:35	3:05	2:40	3:10	2:35	3:05	2:40	3:10	2:35	3:05	2:40	2:40	R16
R17	2:30	3:00	2:35	3:05	2:30	3:00	2:30	3:00	2:20	2:50	2:30	3:00	2:25	2:55	2:30	3:00	2:25	2:55	2:30	3:00	2:25	2:55	2:30	2:40	R17
R18	2:45	3:15	2:50	3:20	2:45	3:15	2:45	3:15	2:30	3:00	2:45	3:15	2:35	3:05	2:45	3:15	2:35	3:05	2:45	3:15	2:35	3:05	2:45	3:10	R18
R19	2:50	3:20	2:55	3:25	2:50	3:20	2:50	3:20	2:35	3:05	2:50	3:20	2:40	3:10	2:50	3:20	2:40	3:10	2:50	3:20	2:40	3:10	2:50	3:10	R19
R20	3:00	3:30	3:05	3:35	3:00	3:30	3:00	3:30	2:40	3:10	3:00	3:30	2:45	3:15	3:00	3:30	2:45	3:15	3:00	3:30	2:45	3:15	3:00	3:00	R20

* Waterford 3 Steam Electric Station Evacuation Time Estimate KLD Engineering, P.C Rev 1, 2012

TABLE 2 TO APPENDIX D*

Time to Clear the Indicated Area of 100 Percent of the Affected Populations

Scenario: Region	Summer (1)			Summer (2)			Summer (3)			Summer (4)			Summer (5)			Summer (6)			Summer (7)			Summer (8)			Summer (9)			Summer (10)			Summer (11)			Summer (12)					
	Midweek			Midweek			Midweek			Midweek			Midweek			Midweek			Midweek			Midweek			Midweek			Midweek			Midweek			Midweek			Midweek		
	Good Weather	Rain	Midday	Good Weather	Rain	Midday	Good Weather	Rain	Midday	Good Weather	Rain	Midday	Good Weather	Rain	Midday	Good Weather	Rain	Midday	Good Weather	Rain	Midday	Good Weather	Rain	Midday	Good Weather	Rain	Midday	Good Weather	Rain	Midday	Good Weather	Rain	Midday	Special Event	Roadway Impact	Region			
R01	3:45	3:45	3:45	3:45	3:45	3:45	3:45	3:45	3:45	3:45	3:45	3:45	3:45	3:45	3:45	3:45	3:45	3:45	3:45	3:45	3:45	3:45	3:45	3:45	3:45	3:45	3:45	3:45	3:45	3:45	3:45	3:45	3:45	R01					
R02	3:50	3:50	3:50	3:50	3:50	3:50	3:50	3:50	3:50	3:50	3:50	3:50	3:50	3:50	3:50	3:50	3:50	3:50	3:50	3:50	3:50	3:50	3:50	3:50	3:50	3:50	3:50	3:50	3:50	3:50	3:50	3:50	3:50	R02					
R03	4:20	4:45	4:15	4:45	4:45	4:45	4:20	4:20	4:20	4:50	4:50	4:25	4:25	4:40	4:25	4:40	4:25	4:40	4:25	4:40	4:25	4:40	4:25	4:40	4:25	4:40	4:25	4:40	4:25	4:40	4:25	4:40	4:25	R03					
R04	3:50	3:50	3:50	3:50	3:50	3:50	3:50	3:50	3:50	3:50	3:50	3:50	3:50	3:50	3:50	3:50	3:50	3:50	3:50	3:50	3:50	3:50	3:50	3:50	3:50	3:50	3:50	3:50	3:50	3:50	3:50	3:50	3:50	R04					
R05	3:50	3:50	3:50	3:50	3:50	3:50	3:50	3:50	3:50	3:50	3:50	3:50	3:50	3:50	3:50	3:50	3:50	3:50	3:50	3:50	3:50	3:50	3:50	3:50	3:50	3:50	3:50	3:50	3:50	3:50	3:50	3:50	3:50	R05					
R06	3:50	3:50	3:50	3:50	3:50	3:50	3:50	3:50	3:50	3:50	3:50	3:50	3:50	3:50	3:50	3:50	3:50	3:50	3:50	3:50	3:50	3:50	3:50	3:50	3:50	3:50	3:50	3:50	3:50	3:50	3:50	3:50	3:50	R06					
R07	3:50	3:50	3:50	3:50	3:50	3:50	3:50	3:50	3:50	3:50	3:50	3:50	3:50	3:50	3:50	3:50	3:50	3:50	3:50	3:50	3:50	3:50	3:50	3:50	3:50	3:50	3:50	3:50	3:50	3:50	3:50	3:50	3:50	R07					
R08	3:50	3:50	3:50	3:50	3:50	3:50	3:50	3:50	3:50	3:50	3:50	3:50	3:50	3:50	3:50	3:50	3:50	3:50	3:50	3:50	3:50	3:50	3:50	3:50	3:50	3:50	3:50	3:50	3:50	3:50	3:50	3:50	3:50	R08					
R09	3:50	3:50	3:50	3:50	3:50	3:50	3:50	3:50	3:50	3:50	3:50	3:50	3:50	3:50	3:50	3:50	3:50	3:50	3:50	3:50	3:50	3:50	3:50	3:50	3:50	3:50	3:50	3:50	3:50	3:50	3:50	3:50	3:50	R09					
R10	3:55	3:55	3:55	3:55	3:55	3:55	3:55	3:55	3:55	3:55	3:55	3:55	3:55	3:55	3:55	3:55	3:55	3:55	3:55	3:55	3:55	3:55	3:55	3:55	3:55	3:55	3:55	3:55	3:55	3:55	3:55	3:55	R10						
R11	3:55	3:55	3:55	3:55	3:55	3:55	3:55	3:55	3:55	3:55	3:55	3:55	3:55	3:55	3:55	3:55	3:55	3:55	3:55	3:55	3:55	3:55	3:55	3:55	3:55	3:55	3:55	3:55	3:55	3:55	3:55	3:55	R11						
R12	3:55	3:55	3:55	3:55	3:55	3:55	3:55	3:55	3:55	3:55	3:55	3:55	3:55	3:55	3:55	3:55	3:55	3:55	3:55	3:55	3:55	3:55	3:55	3:55	3:55	3:55	3:55	3:55	3:55	3:55	3:55	3:55	R12						
R13	3:55	3:55	3:55	3:55	3:55	3:55	3:55	3:55	3:55	3:55	3:55	3:55	3:55	3:55	3:55	3:55	3:55	3:55	3:55	3:55	3:55	3:55	3:55	3:55	3:55	3:55	3:55	3:55	3:55	3:55	3:55	3:55	3:55	R13					
R14	4:20	4:45	4:10	4:40	4:40	4:40	4:20	4:20	4:50	4:50	4:25	4:25	4:40	4:25	4:40	4:25	4:40	4:25	4:40	4:25	4:40	4:25	4:40	4:25	4:40	4:25	4:40	4:25	4:40	4:25	4:40	4:25	R14						
R15	4:20	4:45	4:10	4:40	4:40	4:40	4:00	4:00	4:20	4:45	4:05	4:05	4:20	4:05	4:40	4:05	4:40	4:05	4:40	4:05	4:40	4:05	4:40	4:05	4:40	4:05	4:40	4:05	4:40	4:05	4:40	4:05	R15						
R16	3:55	3:55	3:55	3:55	3:55	3:55	3:55	3:55	3:55	3:55	3:55	3:55	3:55	3:55	3:55	3:55	3:55	3:55	3:55	3:55	3:55	3:55	3:55	3:55	3:55	3:55	3:55	3:55	3:55	3:55	3:55	3:55	R16						
R17	3:55	3:55	3:55	3:55	3:55	3:55	3:55	3:55	3:55	3:55	3:55	3:55	3:55	3:55	3:55	3:55	3:55	3:55	3:55	3:55	3:55	3:55	3:55	3:55	3:55	3:55	3:55	3:55	3:55	3:55	3:55	3:55	R17						
R18	3:55	3:55	3:55	3:55	3:55	3:55	3:55	3:55	3:55	3:55	3:55	3:55	3:55	3:55	3:55	3:55	3:55	3:55	3:55	3:55	3:55	3:55	3:55	3:55	3:55	3:55	3:55	3:55	3:55	3:55	3:55	3:55	R18						
R19	3:55	3:55	3:55	3:55	3:55	3:55	3:55	3:55	3:55	3:58	4:15	3:58	4:15	3:55	3:55	3:55	3:55	3:55	3:55	3:55	3:55	3:55	3:55	3:55	3:55	3:55	3:55	3:55	3:55	3:55	3:55	3:55	R19						
R20	3:55	3:55	3:55	3:55	3:55	3:55	3:55	3:55	3:55	4:00	4:15	4:00	4:15	3:55	3:55	3:55	3:55	3:55	3:55	3:55	3:55	3:55	3:55	3:55	3:55	3:55	3:55	3:55	3:55	3:55	3:55	3:55	R20						

* Waterford 3 Steam Electric Station Evacuation Time Estimate KLD Engineering, P.C. Rev. 1, 2012

Scenario:	Summer		Summer		Summer		Winter		Winter		Winter		Summer	
	Midweek		Weekend		Midweek		Weekend		Midweek		Weekend		Midweek	
	(1)	(2)	(3)	(4)	(5)	(6)	(7)	(8)	(9)	(10)	(11)	(12)	Scenario:	
Region	Good Weather	Rain	Good Weather	Rain	Good Weather	Rain	Good Weather	Rain	Good Weather	Rain	Good Weather	Rain	Good Weather	Region
	Staged Evacuation - 2-Mile Region and Keyhole to 5 Miles													
R21	4:20	4:45	4:15	4:35	4:20	4:50	4:25	4:35	4:25	4:25	4:25	4:30	4:30	R21
R22	3:50	3:50	3:50	3:50	3:50	3:50	3:50	3:50	3:50	3:50	3:50	3:50	3:50	R22
R23	3:50	3:50	3:50	3:50	3:50	3:50	3:50	3:50	3:50	3:50	3:50	3:50	3:50	R23
R24	3:50	3:50	3:50	3:50	3:50	3:50	3:50	3:50	3:50	3:50	3:50	3:50	3:50	R24
R25	4:20	4:45	4:15	4:35	4:20	4:45	4:20	4:35	4:20	4:20	4:20	4:20	4:30	R25
R26	4:20	4:45	4:15	4:35	4:20	4:45	4:25	4:35	4:25	4:25	4:25	4:25	4:30	R26
R27	3:50	3:50	3:50	3:50	3:50	3:50	3:50	3:50	3:50	3:50	3:50	3:50	3:50	R27

APPENDIX E
Radiological Sampling and Monitoring Locations

APPENDIX E

Radiological Sampling and Monitoring Locations

The State of Louisiana does not use pre-designated radiological sampling or monitoring locations.

APPENDIX F
Glossary of Terms

APPENDIX F

RESERVED

APPENDIX G
Reference Documents

APPENDIX G

Reference Documents

1. U.S. Nuclear Regulatory Commission and the Federal Emergency Management Agency
 - a. "Criteria for Preparation and Evaluation of Radiological Emergency Response Plans and Preparedness in Support of Nuclear Power Plants," NUREG 0654, FEMA REP-1, Rev. 1, November 1980
 - b. NUREG-0654/FEMA-REP-1 Addenda, March 2002
2. Code of Federal Regulations, Title 10, Parts 50 and 70
3. Code of Federal Regulations, Title 44, Parts 350 and 351
4. "Emergency Operations Plan"
 - a. St. Charles Parish
 - b. St. John the Baptist Parish
5. Waterford 3 Electric Steam Station Evacuation Time Estimate, KLD Engineering, P.C. Rev. 0, 2012
6. "Final Safety Analysis Report, Site Characteristics," Waterford Steam Electric Station, Unit No. 3, Taft,
7. Louisiana Emergency Operations Plan
8. Louisiana Peacetime Radiological Response Plan.
9. "Manual of Protection Action Guides and Protective Actions for Nuclear Incidents," EPA 400-R-92-001 May 1992, as revised
10. Preparedness and Response in Radiation Accidents, (FDA 83-8211).

APPENDIX H
Letters of Agreement

APPENDIX H

Letters of Agreement*

1. Reception and Care
 - a. Lafourche Parish School Board
 - b. Tangipahoa Parish School Board
 - c. City of Kenner
2. Emergency Broadcast
 - a. WWL AM 870/WLMG FM 101.9
3. Emergency Transportation
 - a. St. James Parish
 - b. St. James Parish School Board
 - c. Plaquemines Parish School Board
 - d. Tangipahoa Parish School Board
 - e. Air Logistics
 - f. MYU Helicopters
 - g. Panther Helicopters, Inc.
4. Emergency Medical
 - a. West Jefferson Medical Center
 - b. Ochsner Medical Center
 - c. St. Charles Parish Hospital
 - d. St. Charles Parish EMS
5. Other
 - a. Lafourche Fire Protection District No. 1 (decon)
 - b. Kenner Fire Department (decon)
 - c. Gramercy Volunteer Fire Department (decon)
 - d. River and Bayou Parishes Mutual Aid & Assistance Task Force
 - i. Assumption Parish Sheriff's Office
 - ii. Assumption Parish, OEP
 - iii. Lafourche Parish Sheriff's Office

- iv. Lafourche Parish, OEP
- v. St. Charles Parish Sheriff's Office
- vi. St. Charles Parish, OEP
- vii. St. James Parish Sheriff's Office
- viii. St. James Parish, OEP
- ix. St. John the Baptist Parish Sheriff's Office
- x. St. John the Baptist Parish, OEP
- xi. Terrebonne Parish Sheriff's Office
- xii. Terrebonne Parish, OEP
- xiii. Louisiana State Police, Troop B

***LDEQ will maintain a copy of the Letters of Agreement.**

APPENDIX I
Hostile Action Based Plan

APPENDIX I
Hostile Action Based Plan

Security-Related Information – Withhold Under 10 CFR 2.390

**ENCLOSURE I
TO ATTACHMENT 1**

**ST. CHARLES PARISH
RADIOLOGICAL EMERGENCY RESPONSE PLAN**

**ENCLOSURE I
ST. CHARLES PARISH
TABLE OF CONTENTS**

	Page
A Introduction	757580
B Authority	757580
C Direction and Control	757580
D Organization and Responsibilities	767683
E Notification and Activation	898995
F Emergency Communications	939399
G Protective Response for the Plume Exposure Pathway	9999105
H Public Health Support	1054051 44
I Appendices	
I-1 Responsibilities for Radiological Emergency Implementing Procedures	1061061 42
I-2 List of St. Charles Parish Radiological Emergency Implementing Procedures	1084084 44
I-3 St. Charles Parish Implementing Procedure NUREG-0654 Cross Reference	1094094 45

Figures

D-1 St. Charles Parish Organizational Chart	878793
D-2 St. Charles Parish Emergency Function and Responsibility Matrix	888894
F-1 St. Charles Parish Communications System	9696102
F- 2 Facilities with Special Notification Devices	888894
F-2a Organizations or Groups Requiring Special Notification	9898104
G-1 St. Charles Parish Reception Center and Shelter Locations	1044044 40

A. Introduction

This Enclosure together with the General Plan of Attachment 1, Louisiana Peacetime Radiological Response Plan, constitutes the entire document to guide the direction and control of local government responses to an emergency situation at Waterford 3 Steam Electric Station. This Enclosure addresses preparedness criteria and planning elements specific for St. Charles Parish. It outlines the direction and control, the responsibilities for the performance of Parish emergency operations and support activities, the means for timely warning and protective actions as needed for citizens threatened by a release of radioactive material, and the means of integrating the actions of local government with those of the other parishes, the State of Louisiana, and Waterford 3.

Although the construction of nuclear power facilities provides substantial safeguards against the occurrence of radiological emergencies, this Enclosure provides an additional level of safety to ensure protection of the public through a coordinated emergency response by local government.

B. Authority

Authority for the development and implementation of this Enclosure is consistent with and pursuant to the provisions of St. Charles Parish Civil Defense Ordinance 262, dated August 12, 1953.

C. Direction and Control

St. Charles Parish, when affected by an emergency at Waterford 3 Steam Electric Station, is responsible for initial radiological emergency response operations within its jurisdiction. The Parish President has the authority to declare a State of Emergency for St. Charles Parish giving him full control of emergency response. The Parish will coordinate such actions through the St. Charles Parish Department of Homeland Security and Emergency Preparedness and its Emergency Preparedness Director. The Emergency Preparedness Director will provide the necessary direction and control to initiate actions and conduct emergency operations required to protect the population of St. Charles Parish from an emergency at Waterford 3 Steam Electric Station. In his absence, responsibility will be delegated according to Parish procedures for continuity of Parish government.

The Emergency Operations Center (EOC) for St. Charles Parish is located on 15026 River Road, Hahnville, across the street from the courthouse. The EOC contains an emergency communications center and provides adequate space for staff and equipment such as tables, telephones, and status boards. The St Charles EOC has two 600 kW diesel generators, either one of which is capable of handling the EOC building electrical load in the absence of utility provided electrical power. The St Charles Parish alternate EOC is located at the Luling VFD station #23 on Ellen Street in Ama, Louisiana.

Generally, staff assignments to the EOC may include representatives of the

following:

1. Operations Staff
 - a. Parish President
 - b. Homeland Security and Emergency Preparedness Director
 - c. Parish Sheriff
 - d. Homeland Security and Emergency Preparedness Senior Coordinator
 - e. EOC Coordinator
 - f. Public Information Officer
 - g. Law Enforcement Services Officer
 - h. Radiological Officer
 - i. Transportation Officer
 - j. School Services Officer
 - k. Health/Medical Officer
 - l. Fire Services Officer
 - m. Public Works Officer
 - n. State Police Representative
 - o. Technical Advisor (W-3)
2. Resource Staff
 - a. Council on Aging Director
 - b. Parish Health Unit Director
 - c. Parks and Recreation Department Director
 - d. Resource Officer
 - e. American Red Cross Representative
 - f. USDA Parish Emergency Board Chairperson
 - g. Emergency Coordinator

- D.** State agency support and technical analysis will be provided through the Louisiana Department of Environmental Quality (LDEQ) and the Governor's Office of Homeland Security and Emergency Preparedness (GOHSEP). The LDEQ will be responsible for offsite radiological monitoring and analysis and protective action recommendations. The GOHSEP will coordinate all state resources through the appropriate state agencies. In the event the emergency situation is beyond local control and response capabilities, the Governor may issue a "Declaration of Emergency," whereby any or all emergency operations would then be under the direction of the Governor.

E. Organization and Responsibilities

Local organizations with emergency responsibilities are identified in the following sections. Each organization is responsible for assuring continuity of resources to support emergency operations for a protracted period. Each organization or sub-organization having an operations role is responsible for maintaining its own Emergency Implementing Procedures (EIP) which describe detailed emergency actions to be performed.

The relationships between the local organizations are graphically depicted in Figure D-1. As shown, local organizations are coordinated by the Parish Emergency Preparedness Director with the exception of the Parish Health Unit and Louisiana Department of Children and Family Services, which are coordinated by the State Department of Health and Hospitals; however, the Emergency Preparedness Director may provide limited coordination, if required by the circumstances at the time of the emergency, with the approval of the State Department of Health and Hospitals. The primary and support responsibilities of the local organizations for key emergency functions are specified in the Emergency Function and Responsibility Matrix shown in Figure D-2.

1. Local Government

a. Parish President

The St. Charles Parish President has the following responsibilities.

- i. The safety and well being of persons in the Parish
- ii. Maintenance and implementation of the St. Charles Parish Radiological Emergency Response Plan through the Parish Emergency Preparedness Department for response to an accident at Waterford 3 Steam Electric Station
- iii. Initiating actions and providing direction and control at the local level
- iv. Conducting emergency operations through the Emergency Preparedness Director
- v. Through the advice of LDEQ, authorizing emergency workers to incur exposure in excess of general public PAGs
- vi. Management of resources and facilities within the parish
- vii. Liaison to state agencies, military, and industry
- viii. Designating a chief spokesperson and approving official news releases for the Parish

- b. The Parish Attorney is responsible for:
- i. Providing legal advice and counsel to the Emergency Preparedness Director in the interpretation of Parish, State, and Federal law relating to disaster preparedness under a given circumstance.
 - ii. Ensuring legality of any and all emergency laws and ordinances passed by the Parish Council.
 - iii. Providing an emergency representative to the Parish EOC, as requested, during an emergency.
- c. St. Charles Parish Homeland Security and Emergency Preparedness

The Emergency Preparedness Department, under the direction of the Emergency Preparedness Director, is responsible for the development and maintenance of procedures to implement his plan.

- i. The Emergency Preparedness Director is responsible for:
- 1) Acting as the Chief of Staff for the Parish President and directing and coordinating Parish emergency response to an accident at Waterford 3 Steam Electric Station.
 - 2) Serving as the liaison between the Parish President and emergency response forces.
 - 3) Supervising the development and maintenance of plans and procedures for Parish response to an accident at Waterford 3 Steam Electric Station, including quarterly verification and update of emergency implementing procedures telephone numbers, and an annual review and update of emergency implementing procedures.
 - 4) Supervising the development and implementation of training and public information and education programs within the Parish.
 - 5) Maintaining an adequate supply of radiation monitoring equipment through a program of equipment inspection, inventory, and operational checks.
 - 6) Maintaining an adequate supply of KI and ensuring the KI is stored at room temperature.
 - 7) Developing and maintaining contracts and

agreements necessary to implement the Parish radiological emergency response plan.

- 8) Ensuring the coordination of special facility (e.g., schools, nursing homes, jails, and industry) emergency procedures and protective actions with Parish plans in response to an accident at Waterford 3 Steam Electric Station.
 - 9) Ensuring notification and coordination of all local agencies supporting emergency operations, as required, including the coordination with GOHSEP for activation and use of appropriate reception centers and shelters should an evacuation be necessary.
 - 10) Coordinating overall emergency operations to protect life and property at the local level.
 - 11) Coordinating with GOHSEP and LDEQ in supporting emergency operations at the local level.
 - 12) Activating the public alert system, ensuring warning and notification of persons within the 10-mile EPZ, as necessary. For more information, see the St. Charles Parish Emergency Plan Implementing Procedure: Emergency Operations Center – Attachment 8: Public Alert.
 - 13) Maintaining adequate communications to conduct and coordinate local emergency operations.
 - 14) Coordinating with the Public Information Officer to disseminate public information.
 - 15) Appointing a Public Information Office, Radiological Officer, Coordinator, Emergency Coordinator, and Health/Medical Officer.
- ii. The Public Information Officer is responsible for:
- 1) Participating in the Parish-level program aimed at educating the public on response to an accident at Waterford 3 Steam Electric Station.
 - 2) Providing liaison with news media organizations prior to and during an emergency.
 - 3) Assisting in preparation of news releases.
 - 4) Providing information to the Joint Information

Center.

- iii. The Radiological Officer is responsible for:
 - 1) Establishing arrangements for the surveying and decontamination of emergency personnel and vehicles, and coordinating this effort with LDEQ.
 - 2) Distribution of dosimetry devices to emergency personnel and maintenance of related records.
 - 3) Ensuring that emergency personnel in the field are informed of radiological conditions and necessary protective actions, as necessary.
 - 4) Maintaining an inventory of radiological equipment within the parish.
 - 5) Gathering radiological information and keeping records on the radiological response efforts.
 - 6) Distribution of potassium iodide to emergency personnel and maintenance of related records.
- iv. The Coordinator and Emergency Coordinator are responsible for:
 - 1) Ensuring the maintenance and availability of communication equipment and all call lists necessary to provide alert/notification and communications support in an emergency.
 - 2) Initiating the communication of the alert/notification message to emergency response organizations.
 - 3) Establishing and maintaining a communications system capable of linking the St. Charles Parish EOC with Waterford 3 Steam Electric Station, state response agencies, parish emergency response agencies, and with St. John the Baptist Parish.
 - 4) Recruiting and training radio operators and telephone attendants.
- v. The Health/Medical Officer is responsible for:
 - 1) Providing rescue and emergency medical services, including the transportation of victims of radiological incidents.
 - 2) Providing transportation support for non-ambulatory evacuees.
 - 3) Coordinating with hospitals from adjacent jurisdictions.

- 4) Coordinating with the Parish Health Unit and local medical practitioners.
- 5) Providing medical services assistance to other W3P, as needed.
- 6) Maintaining communications with the Parish Sheriff's Office.

d. Sheriff's Office

The Sheriff's Office is the lead law enforcement and traffic control agency within St. Charles Parish and has overall control of all safety operations within the parish. The Sheriff, as the Chief Law Enforcement Officer, will be responsible for:

- i. Managing the evacuation of portions of the Parish within the 10-mile EPZ.
- ii. Direction and control of traffic within the Parish.
- iii. Direction and control of traffic coming from other W3P in transit to reception centers in nearby support parishes.
- iv. Preservation of law and order.
- v. Instituting access control and area security.
- vi. Assisting in performing search and rescue work, as required.
- vii. Assisting in warning residents and transients, as required.
- viii. Providing assistance to, and liaison with outside law enforcement agencies, as required.
- ix. Coordination with local and state law enforcement agencies to provide emergency support operations.
- x. Emergency communications support.
- xi. Providing a representative to the parish EOC, as requested, during an emergency.
- xii. Providing protective measures for Parish Correctional Center inmates.

e. Volunteer Fire Departments

The Volunteer Fire Departments within St. Charles Parish support Emergency Preparedness by providing technical assistance, manpower, and equipment to aid disaster victims within the Parish. Under the direction of the respective Chiefs, the Volunteer Fire Departments are responsible for:

- i. Providing fire and rescue aid.
 - ii. Assisting in warning and notification of the public within the EPZ, if needed.
 - iii. Providing a representative to the EOC, as requested, during an accident.
- f. School Board
- The Parish School Board, under the direction of the Superintendent, is responsible for:
- i. Providing school buses and drivers for evacuation of students and school personnel from schools in portions of the Parish within the 10-mile EPZ.
 - ii. Providing transportation for assisting evacuation of residents and transients from the affected areas.
 - iii. Establishing arrangements for the care of school students at reception centers or host schools until students are picked-up by parents.
 - iv. Maintaining communications with the Parish EOC on operations and support needs and coordinating with other agencies on support services.
 - v. Providing an emergency representative to the Parish EOC, as requested, during an accident.
- g. St. Charles Parish Public Works Department
- The Director of the St. Charles Parish Public Works Department is responsible for:
- i. Assisting in traffic control and re-entry/recovery operations by providing signs and barriers.
 - ii. Coordinating resources available to the Parish.
 - iii. Providing highway maintenance and clearing impediments to allow road passage.
 - iv. Coordinating with the State Department of Transportation and Development and Office of Highways personnel for additional assistance as required.
 - v. Providing an emergency representative to the Parish EOC, as requested, during an accident.
- h. St. Charles Parks and Recreation Department
- The St. Charles Parks and Recreation Department Director is responsible for providing personnel, equipment, open-space areas, and facilities in assisting the Emergency Preparedness

Director. Other responsibilities include:

- i. Assisting Public Works in carrying out emergency response tasks.
- ii. Support of fire-fighting operation with equipment and manpower.
- iii. Assisting elderly, handicapped, or others with special needs during evacuation, and at reception and care facilities in host areas, if requested.
- iv. Supporting procurement of medical supplies.
- i. Assisting with expedient acquisition of radio-protective drugs and for their use by emergency workers and institutionalized persons, if required.

2. Parish-Level State Support Agencies

a. Health Unit (DHH)

In conjunction with the State Department of Health and Hospitals, the Parish Health Unit, under the direction of the Parish Health Unit Director, is responsible for:

- v. Assisting in the coordination of required medical services.
- vi. Assisting with expedient acquisition of radio-protective drugs (i.e., KI) and for their use by emergency workers and institutionalized persons, if required.
- vii. Assisting in collection of water and milk samples, and transportation of such samples for laboratory analysis.
- viii. Maintaining communications with the Parish EOC on operations and support needs and coordinating with other agencies on support services as needed.
- ix. Providing an emergency representative to the Parish EOC, as requested, during an emergency.
- x. Providing for, in coordination with the FDA, the collection of water, milk, sewage, and food samples from food processing plants, and for the transportation of such samples for laboratory analysis, during a radiological emergency.
- xi. In coordination with the Department of Agriculture and Forestry, USDA, and LDEQ, when requested, providing guidance and advice on identifying storing and disposing of contaminated agricultural products.
- xii. In coordination with the FDA, providing guidance for the diversion or destruction of radiologically

contaminated food, crops, and milk during an accident.

- xiii. Providing for the inspection of shelter facilities to ensure that adequate sanitary, water, and food service is available for the number of people assigned.
- xiv. Providing guidance and advice to water purification facilities of an accident and advice on the appropriate protective action.
- xv. Supporting the relocation of hospital patients from hospitals within the risk areas to identified support hospitals during an accident.
- xvi. Assisting in the provision of mass emergency medical transportation resources to be used for the relocation of hospital patients during an accident.
- xvii. Supporting risk health care facilities and risk Parishes with identification and coordination of medical resources.

b. Parish Extension Service

The St. Charles Parish Extension Service, under the direction of the County Agent, in cooperation with the State Department of Agriculture and Forestry and USDA, is responsible for:

- i. Providing general assistance and coordination with USDA federal disaster assistance programs to include crop loss, livestock feed, and other emergency measures as applicable.
- ii. Disseminating agricultural advisories to affected Parish farmers and other agribusinesses during an accident at Waterford 3 Steam Electric Station.
- iii. Assessing damage to Parish crops and livestock in the event of an emergency.

c. Louisiana Department of Children and Family Services

The Louisiana Department of Children and Family Services, under the direction of the Parish Administrator and in conjunction with the American Red Cross, is responsible for:

- i. Registration of evacuees at reception centers and shelters.
- ii. Coordinating emergency shelter, feeding and clothing, and social services for displaced persons, as necessary, with the American Red Cross.
- iii. Providing assistance to area hospitals, nursing homes,

and OHSEP personnel, as requested, for social services, special care arrangements and transportation assistance.

- iv. Providing a representative to the EOC, as requested, during an accident.
 - v. Liaison between the Parish EOC and support parish reception centers and shelters.
 - vi. Establishing a Parish evacuee locator service in coordination with support parish reception centers during an emergency.
- d. State Police (Troop B)
- In conjunction with the State Department of Public Safety and Corrections, the State Police, under the direction of the Troop Commander, will be responsible for the following:
- i. In coordination with the Sheriff, assisting in traffic control operations during an evacuation, particularly on State or Federal highways.
 - ii. In coordination with the Sheriff, assisting in establishing access control to affected areas.
 - iii. In coordination with the Sheriff, assisting in security and law enforcement support for affected areas.
 - iv. Providing communications support, if necessary.
 - v. Providing a representative in the Parish EOC, as requested, to coordinate State Police support with the State EOC.

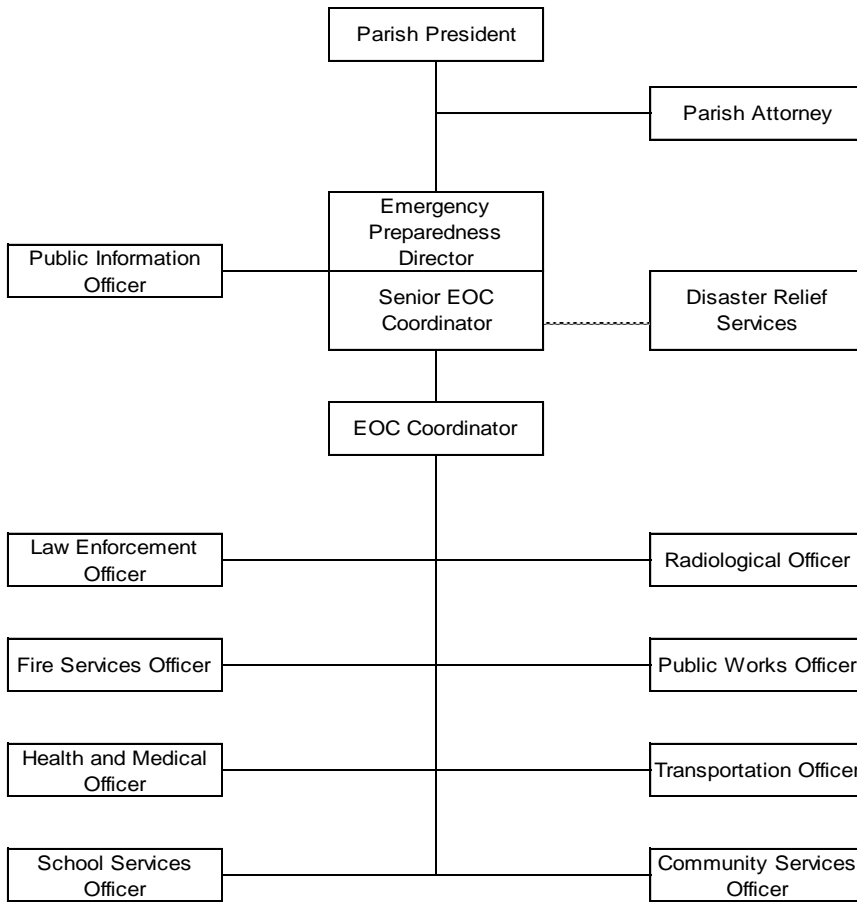
3. Other Organizations

- a. St. Charles Parish Council on Aging
- The St. Charles Parish Council on Aging, under the direction of the Executive Director, is responsible for:
- i. Providing transportation assistance for disabled and elderly evacuees.
 - ii. Providing annual update of lists of non-institutionalized disabled personnel.
- b. St. Charles Parish Hospital
- i. The St. Charles Parish Hospital, under the direction of the Administrator, is responsible for providing health and medical care services to non-contaminated injured individuals.
 - ii. The primary hospital for medical support for contaminated injured persons will be either Ochsner Medical Center or

West Jefferson Medical Center. The secondary or backup hospital is Our Lady of the Lake Regional Medical Center.

FIGURE D-1

St. Charles Parish Emergency Preparedness Organization Chart



_____ Direct Relationship
----- Coordinating Relationship

FIGURE D-2

**St. Charles Parish
Emergency Function and Responsibility Matrix**

St. Charles Parish Emergency Function Figure 2 P = Primary S = Support	Parish President	Emerg. Prep. Director	Senior Coordinator	Emergency Coordinator	Fire Officer	Law Enforcement Officer	Health & Medical Officer	Public Works Officer	Public Information Officer	Transportation Officer	Radiological Officer	School Social Services	LDEQ	Support Parishes
Direction & Control	P	S	S											
Notification		P	S	S	S	S	S			S		S		
Communications				P	S	S								
Public Alert/Notification		P	S	S	S	S			S					
Public Information	S	S	S						P					
Accident Assessment											S		P	
Public Health							P				S			
Social Services							P					S		
Fire & Rescue				S	P									
Traffic Control						P		S						
Access Control						P		S						
Emergency Medical Services				S	S		P							
Law Enforcement						P								
Transportation							S	S		P		S		
Protective Response	P	S	S	S	S	S	S	S	S	S	S	S	S	
Radiological Exposure Control							S				P			
Food & Water Purity							P	S						
Shelter & Care (Support Parishes)														P
Highway Maintenance								P						
Security						P								
Reentry & Recovery	P	S	S	S	S	S	S	S	S	S	S	S	S	

E. Notification and Activation

Once an emergency classification has been declared at W-3, the Control Room will notify the Parish warning points. Emergency Coordinators at the EOC (Parish 911 Center as backup) will provide for 24-hour per day coverage of the communications equipment. Notification messages, including those received from entities other than the licensee, will be verified by the dispatcher in accordance with established procedures. The primary means of notification is the Waterford 3 Operational Hotline; the secondary means of notification is the commercial telephone system; the third means of notification is the Office of Emergency Preparedness Radio System (See Section F - Emergency Communications).

This emergency response plan will be activated by the Parish President through the Office of Emergency Preparedness Director. Local response organizations will be notified of the emergency by the Parish. Such notification messages will specify whether the organization is to standby, or start to mobilize emergency response personnel. Emergency response personnel will be called to duty using the alert/notification call system of the response agency. Support agencies will be alerted by the agency they are supporting. Should mobilization be required, emergency response personnel will report to their agency response center for specialized equipment and further instructions.

Emergency personnel contacts are located in the St. Charles Parish Emergency Plan Implementing Procedure, Emergency Operations Center, Attachment 1, Staff Notification Procedure, Enclosures 1 – 4. The EOC is declared fully operational upon the arrival of the operations staff defined in St. Charles Parish Emergency Plan Implementing Procedure, Emergency Operations Center, Attachment 2, EOC Activation.

During an emergency at W3SES, St. Charles Parish will not send personnel to the W3SES EOF.

The sequences for anticipated notifications and activation of emergency response personnel for each emergency classification are provided below. Details of notification and activation consistent with the emergency classification scheme are provided in established procedures.

1. Notification of Unusual Event

a. Notification

Upon receipt of a classification of Notification of Unusual Event by W-3, the Parish Emergency Coordinator will notify the Office of Emergency Preparedness Director and other key individuals consistent with this classification and in accordance with

established procedures utilizing the paging system described in Section F. During normal working hours, notification is made to the Emergency Operations Center (EOC) Emergency Operation Center (EOC) with the 911 Center as a backup; after normal hours, the EOC Emergency Coordinator provides notification to the Emergency Preparedness Director.

b. Activation

No activation of emergency response personnel or emergency facilities is anticipated for the Notification of Unusual Event. However, such action can be taken if deemed appropriate at the time. The Office of Emergency Preparedness Director will monitor the situation and be prepared to escalate to a higher level of response if the situation warrants, or standby until closeout of the emergency.

2. Alert

a. Notification

Upon receipt of a classification of Alert by W-3, the EOC Emergency Coordinator will notify the Office of Emergency Preparedness Director (if not previously notified), other key individuals, and other supporting response organizations consistent with this classification and in accordance with established procedures utilizing the paging system described in Section F. The Department Directors will, in turn, alert emergency personnel in their respective organizations by telephone or two-way radio. Also, local radio stations WWL-AM/WLMG-FM (the primary EAS stations for St. Charles Parish) will be alerted to standby by the EOC. For more information, see St. Charles Parish All Hazards Plan, Annex C, and St. Charles Parish Emergency Plan Implementing Procedure: Public Information Procedures.

b. Activation

Upon notification, the Office of Emergency Preparedness Director and key staff will augment the Parish's emergency response resources by activating key staff members to the Parish EOC and activating the Communications Center with the Parish EOC. All supporting response organizations will maintain standby status until closeout or escalation of the emergency.

3. Site Area Emergency

a. Notification

Upon receipt of a classification of Site Area Emergency by W-3, the EOC Emergency Coordinator will notify the Office of Emergency Preparedness Director (if not previously notified), other key individuals, and other supporting response organizations consistent with this classification and in accordance with established procedures. The paging system described in Section F will be utilized. The Department Directors will, in turn, notify key emergency personnel in their respective departments by telephone or two-way radio. Local radio stations WWL-AM/WLMG-FM (the primary EAS radio stations for St. Charles Parish) will be notified and brought to standby status (if not previously alerted) and, if appropriate, given messages to broadcast consistent with the situation via St. Charles Parish EOC.

b. Activation

Upon notification, the Office of Emergency Preparedness Director will activate the Parish EOC and other emergency response centers as appropriate. All local emergency response organizations will report to their duty stations. A duty roster for extended operations will be established, which consists of two 12 hour shifts for 24 hour coverage. The various implementing procedures give each duty officer the responsibility of establishing their relief officer. Traffic control and transportation support personnel will prepare for possible evacuation and reception centers will prepare for opening should conditions warrant. Local radio stations WWL-AM/WLMG-FM (the primary EAS radio stations for St. Charles Parish) will provide the public in the affected areas of St. Charles Parish, out to a 10-mile radius of W3, with periodic updates of the emergency.

4. General Emergency

a. Notification and Activation

Upon receipt of a classification of General Emergency by Waterford 3, the EOC Emergency Coordinator will notify the Office of Homeland Security and Emergency Preparedness Director (if not previously notified), other key individuals, and other supporting response organizations in accordance with established procedures, and emergency response centers will be activated. The Alert Notification System will be activated in the Parish.

b. All other response actions will be as for a Site Area Emergency.

5. Alert/Notification of the Public

- a. The primary alert system for St. Charles Parish is comprised of a combination of fixed sirens, helicopters fitted with mounted alerting devices, the St. Charles Parish Industrial Hot Line, cable TV override, automatic telephone dialing devices, school board radios, and the U.S. Coast Guard for the notification of ships along the Mississippi River.
- b. Upon determination that conditions at Waterford 3 warrant protective actions, the Office of Emergency Preparedness Director will issue instructions for the activation of the primary alert system.
- c. Should an element of the primary alert system fail, the Office of Homeland Security and Emergency Preparedness Director has available a number of backup methods including route alerting in populated and wetland areas and commercial telephone.
- d. St. Charles Parish will contact WWL/WLMG Newsroom Hotline directly for release of EAS messages The Hotline is assessible 24 hours a day, 7 days a week.
- e. The default rebroadcast time for St Charles Parish is 15 minutes, however, circumstances could dictate a shorter or longer rebroadcast frequency, at the discretion of the St. Charles Parish DEP.

F. Emergency Communications

This section describes the various communications systems available for prompt communications among principal organizations and emergency personnel, and to the public. For more information, see St. Charles Parish Implementing Procedures, Attachment 3-Communication and Public Information procedures. A summary of communications systems available is shown in Figure F-1.

The Parish EOC provides the focus of communications for emergency operations. Direction, control and coordination emanates from the EOC through the Parish President and the Office of Emergency Preparedness Director. Data and feedback relevant to the administration of emergency operations will be directed to the EOC.

1. W3SES Operational Hotline

The primary means of 24-hour per day notification and communications between W3SES and the St. Charles Parish emergency response organization is the W3SES Operational Hotline. This is a dedicated telephone system which allows St. Charles Parish, the other W3P, LDEQ and GOHSEP to receive emergency notification messages from W3SES simultaneously.

Locations equipped with a W3SES Operational Hotline include, but are not limited to, the following:

- W3SES Control Room
- W3SES Technical Support Center (TSC)
- W3SES Emergency Operations Facility (EOF)
- W3SES Back-up EOF
- St. Charles Parish EOC,
- St. Charles Parish 911 Center
- St. John the Baptist Parish EOC
- St. John the Baptist E-911 Center
- LDEQ, REP&R Unit Office, Baton Rouge
- GOHSEP EOC, Baton Rouge

The dedicated telephone system which serves as the W3SES Operational Hotline may be replaced with an Internet based electronic notification system at any or all of these locations. The EOC provides 24-hour per day monitoring of the W3SES Operational Hotline within the Parish. The 911 Center is used as a backup.

2. Homeland Security and Emergency Preparedness Radio System

The Emergency Preparedness Radio System serves as an alternate communications system to the Waterford 3 Operational Hotline. A receive-transmit console is available at the same locations listed above that are equipped with a Waterford 3 Operational Hotline. EOC Emergency Coordinator will provide 24-hour per day monitoring of the Emergency Preparedness Radio System within the Parish.

The Emergency Preparedness Radio System serves as another alternate communications system to the commercial telephone for communicating with St. John Parish, LDEQ and GOHSEP.

3. Parish Radio Systems

Fixed, mobile and hand-held radios operating on various frequencies provide for communication between the Parish EOC and representatives from the following organizations (see also Figure F-1):

- Sheriff's Office
- Volunteer Fire Departments
- Hospitals (St. Charles Hospital)
- Parish Public Works
- Parish Emergency Medical Services
- State Police
- School Board

4. Medical Support Facilities Communications Systems

A coordinated communications link for the Parish EOC, hospitals, and ambulances is provided by Emergency Medical Services and Fire Services Communications Systems. These systems are comprised of either fixed/mobile radios or commercial telephones. Coordinated radio communications with ambulances and St. Charles Parish Hospital is provided. Commercial telephones serve as backup communications from the EOC to St. Charles Parish Hospital.

5. Commercial Telephone

Commercial telephone service is available at each emergency response facility and can be used as an alternate communication system. The Parish is serviced by AT&T. Total breakdown is backed up by special lines outside the normal System.

St. Charles Parish has requested priority from AT&T for restoring service provided in the Parish EOC.

6. Paging System

Key emergency personnel in the emergency response organizations and supporting emergency personnel can be contacted through the paging system.

7. Alert Notification System

An Alert Notification System located throughout the 10-mile EPZ will be used to alert the public to listen to the local radio stations WWL-AM 870/WLMG-FM 101.9. That portion of the system located within St. Charles Parish will be activated from the Parish EOC. This system is maintained by Waterford 3 Steam Electric Station. For more information, see the St. Charles Parish Emergency Plan Implementing Procedure: Emergency Operations Center – Attachment 8: Public Alert.

Special notification devices, such as tone activated alarm pagers or automatic telephone dialing systems, are provided for special facilities including schools, hospital, and major employers. Facilities with special notification devices are shown in Figures F-2 and 2a. When activated, the Emergency Preparedness Director can provide information and instructions over the system.

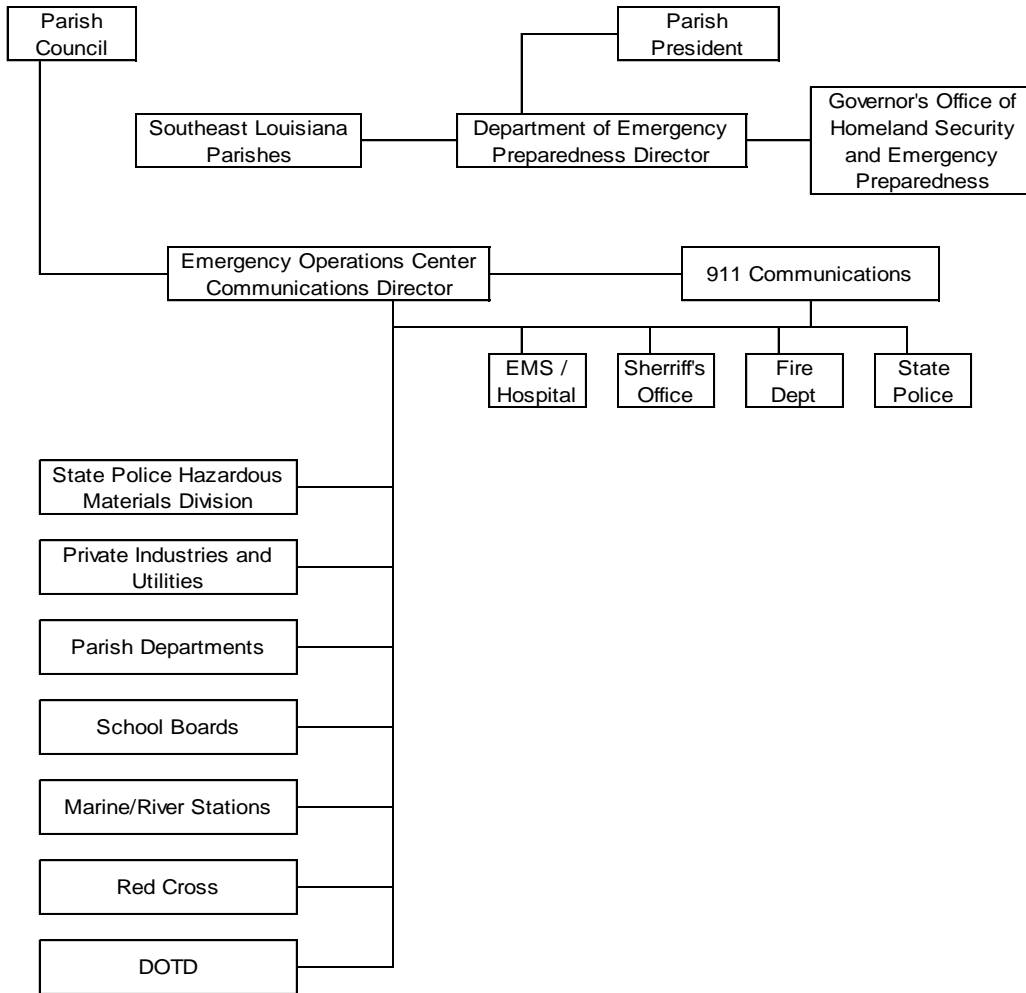
Mobile sirens and public address systems mounted on patrol cars, fire department and other emergency vehicles, and helicopters could provide backup to the Alert Notification System.

8. Testing

Periodic testing of emergency communications and the Alert Notification System is conducted on a regularly scheduled basis (approximately monthly) in accordance with established procedures. For more information see LPRRP, Basic Plan, Chapter 4, Section IV and St. Charles Parish Emergency Plan Implementing Procedures: Emergency Operations Center – Attachments 3–Communications and 8- Public Alert/Notification

FIGURE F-1

St. Charles Parish Communications System



_____ Direct Relationship

..... Coordinating Relationship

FIGURE F-2

Facilities with Special Notification Devices

St. Charles Parish Emergency Industrial Hotline System

- ADM Ama
- ADM Destrehan
- Air Liquide
- Air Liquide-Taft
- Air Products
- Bunge
- Rain CII Cornerstone
- Galata Chemical
- Dow St. Charles Operations
- East Bank Water Plant
- International Matex Tank Terminals
- Koch Nitrogen
- Little Gypsy
- Monsanto
- Mosaic Phosphates Company
- Motiva
- Occidental Chemical
- Praxair
- Shell Chemical
- Valero
- Waterford 1&2
- Waterford 3
- Williams-Discovery

FIGURE F-2a

Organizations or Groups Requiring Special Alert/Notification

Industries with High Background Noise

- Plantation Business Campus Leasing Office, Destrehan
- Carter Chambers, Luling

Special Population Groups

EOC Staff Officer Responsible for Notification

- | | |
|---|-------------------------|
| • School Children
(while school is in session) | School Services Officer |
| • Children in Day Care Centers | Transportation Officer |
| • Hospitalized Persons | Health/Medical Officer |
| • Persons in Nursing Home | Health/Medical Officer |
| • Industrial Workers | Emergency Coordinators |
| • Parish Jail | Law Enforcement Officer |
| • Housebound Infirm | Health/Medical Officer |

G. Protective Response for the Plume Exposure Pathway (10-mile EPZ)

1. Waterford 3 Steam Electric Station (W3SES) will simultaneously notify the Parish and State agencies of protective action recommendations based on accident conditions.

LDEQ will provide an independent assessment and protective action recommendations to the LDEQ Secretary or designee, who will coordinate with GOHSEP on the efficacy of proposed recommendations.

2. The Parish will make a decision on the implementation of these recommendations based on local conditions and report its decision to LDEQ.
3. St. Charles Parish will coordinate operational elements for implementation of the protective action recommendations with GOHSEP as appropriate to the situation.
4. Predetermined protective actions will be taken when the projected dose at any place and time appears to be at or above those recommended in Protective Action Guides (PAG).

The Parish and the 10-mile EPZ have been divided into Protective Action Sections (PAS) for designation of threatened areas and to denote where protective actions are to be taken. Tab A to Appendix B in Attachment 1 address the PAS in detail.

5. Protective Actions

Actions taken to protect the public may include any or all of the following:

- a. An advisory to Monitor and Prepare
- b. Notification of affected residents and transients to seek immediate shelter,
- c. Evacuation of transients and residents within a designated Protective Action Section to reception centers or shelter areas outside the ten mile EPZ,
- d. Implementation of respiratory protection procedures: people within the risk area will be advised to cover their noses and mouths with handkerchiefs, cloth, or other protective materials, and to limit air intake from heating or cooling systems if they take in outside air.
- e. Control of entrance into affected areas,
- f. Implementation of procedures to prevent the consumption and distribution of contaminated food and water supplies, and
- g. Implementation of procedures to decontaminate persons when necessary.

6. Monitor and Prepare

If current conditions at the nuclear power plant do not warrant an evacuation, but there is a possibility that an evacuation or other protective action may be warranted later as the situation develops, the public in the affected sections will be advised to Monitor and Prepare, that is, to stay tuned to TV, radio and other media to keep informed of any future protective action decisions, and to prepare for the possibility of evacuation, Shelter in-place, or other protective actions.

7. Control of Entrance into Affected Areas

Under certain conditions, action will be taken to limit the number of people who enter an affected area. These conditions will be determined by the Parish President upon recommendations from LDEQ. The Parish Sheriff's Office will provide support to control access with assistance as requested from Louisiana State Police.

8. Sheltering (in-place)

The decision to recommend taking shelter indoors will be made by the Parish President through the advice of the Secretary of LDEQ or designee. The notification to take shelter indoors will be issued via the Alert Notification System and the EAS.

9. Evacuation

a. Evacuation of the Utility

In the event of an evacuation at W3SES, the St. Charles Parish Sheriff's Department is responsible for traffic control per St. Charles Parish Radiological Emergency Implementing Procedure: Law Enforcement Services.

b. Evacuation of the General Public

- i. Evacuation of any affected sections within St. Charles Parish will be at the discretion and direction of the Parish President.
- ii. If a "State of Emergency" has been declared by the Governor, under the provisions of the Louisiana Homeland Security and Emergency Assistance and Disaster Act, the Governor would direct the evacuation jointly with the Parish President.

- iii. The basis for a decision to evacuate will be recommendations from Waterford 3 Steam Electric Station (W3SES) and the Secretary of LDEQ or designee based on accident assessment and operational considerations at the time of emergency.

_____ If the order to evacuate is given, evacuation will be by Protective Action Section. Citizens residing in a given section and ordered to evacuate will be instructed to proceed according to predetermined evacuation routes. All evacuation routes will lead citizens toward a reception center. St. Charles Parish EOC will consider alternate routes as needed.

- iv. Evacuees from St. Charles Parish will initially report to the designated reception centers for registration, monitoring and decontamination (as required). If necessary, evacuees will then be routed to temporary shelters. Figure G-1 shows the location of the reception center and shelter areas.
- v. Resources available to assist in evacuation of affected Parish areas are maintained in Parish Implementing Procedures or Resource Data Books.
- vi. The primary means of evacuating residents, transients, and industrial workers from the 10-mile EPZ will be by private automobiles. Announcements will be made via the EAS requesting that car-pooling arrangements be implemented to accommodate those without transportation, and multiple-car families will be encouraged to take only one car to minimize traffic congestion. Designated pickup points for persons without private transportation are outlined in the W-3 Emergency Reference Information Brochure distributed to the public.
- vii. St. Charles Parish Planning is not restricted to only 10 mile radius. Historical data indicates number of persons without transportation would be approximately 2% of population.

c. Traffic Control

- i. Strict traffic control measures will be utilized to:
 - 1) control ingress and egress of affected areas;
 - 2) maintain orderly flow of evacuated traffic;
 - 3) remove impediments on evacuation routes;

- 4) assure access by ambulance and rescue vehicles;
 - 5) assure area security.
- ii. Periodic patrols by law enforcement and/or other emergency personnel will canvas areas to:
- 1) maintain order;
 - 2) assist disabled evacuees;
 - 3) confirm evacuation and remove remaining persons as required.
- iii. More details on traffic and access control, including the flow chart which addresses the potential need to use alternate routes, can be found in the following procedures::
- 1) St. Charles Parish Emergency Plan Implementing Procedure, Law Enforcement Service.
 - 2) St. Charles Parish Emergency Plan Implementing Procedure, Public Works.
 - 3) Waterford 3 SES Traffic and Access Control Points map and index.

d. Evacuation for Disabilities and Access/Functional Needs

The Office of Emergency Preparedness Director will ensure that a current list of special-need evacuees is available. The Emergency Operations Center (EOC) will also ensure that special-needs people will be provided transportation as required. Disabled and access/functional need evacuees who are not evacuated by private vehicles will be evacuated by ambulance or mini-van.

e. Evacuation of Schools

Protective response measures will be implemented to minimize radiological exposure risks to school children. The entire parish is generally evacuated if evacuation is necessary during an emergency. If a decision to evacuate is made during school session, school children located within the 10-mile Emergency Planning Zone will be placed on school buses and transported outside the 10-mile Emergency Planning Zone to a designated Reception Center. Designated reception centers will register and perform monitoring and decontamination (as required). Children will remain under the supervision of school personnel until they are returned to their parents.

For more information, see:

- St. Charles Parish Emergency Plan Implementing Procedures, School Services, and
- St. Charles Parish Emergency Plan Implementing Procedures, Transportation Services.

f. Evacuation of Medical Facilities

Protective response measures for St. Charles Parish Hospital, the Luling Nursing Home and Evangeline of Ormond must be coordinated with the Parish EOC's Health/Medical Officer and the Louisiana Department of Health and Hospitals. Overall responsibility for appropriate action rests with the Administrator of each facility.

g. Evacuation of Incarceration Facilities

The Nelson Coleman Correctional Center is located in Hahnville, approximately two miles from Waterford 3. Sheltering, respiratory protection, or the use of radioprotective drugs may be recommended as an alternative to evacuation depending upon the circumstances surrounding the accident.

The St. Charles Parish Sheriff is responsible for the protection of prisoners incarcerated in the Parish Correctional Center. The Sheriff will implement those actions necessary for the protection of prisoners. If an evacuation is recommended but cannot be immediately accomplished, the use of radioprotective drugs will be considered. These substances will only be administered to prisoners with the concurrence of the State Health Officer.

If circumstances warrant, an evacuation of the Parish Correctional Center will be accomplished using designated transportation resources. Agreements have been reached with the Sheriffs of neighboring Parishes and State Police for the transportation and confinement of prisoners during an evacuation.

h. Evacuation of Major Industry and Parks

Major industries and industrial parks which lie within the Parish portion of the 10-mile EPZ will be notified as outlined in Section F. No additional transportation is expected to be needed beyond vehicles already available at these locations at the time of an emergency.

FIGURE G-1

St. Charles Parish Reception Centers and Shelter Listing

<u>Support Parish</u>	<u>Reception Centers</u>
Tangipahoa	Hammond High School 45168 River Road Hammond, LA
East Baton Rouge	Baton Rouge River Center 275 S River Road Baton Rouge, LA
Jefferson	Pontchartrain Center 4545 Williams Boulevard Kenner, LA
Jefferson	Alario Center 2000 Segnette Boulevard Westwego, LA
Lafourche	Central Lafourche High School 4820 Highway 1 Matthews, LA

SHELTERS:

St. Charles and St. John the Baptist Parishes, as the 10-mile EPZ risk parishes during an emergency at Waterford 3 Steam Electric Station, will direct evacuees to reception centers located outside the 10-mile EPZ in support parishes. These support parishes include Tangipahoa, Jefferson, Orleans, East Baton Rouge and Lafourche.

Shelter assignments in the support parishes will be made in conjunction with American Red Cross. Shelter capacities are maintained by American Red Cross representatives.

The support parish is responsible for managing its designated reception center, including staffing, arrangements for handling students at the center and provisions for the radiological monitoring of evacuees. Students are under the supervision of their respective school until a parent or designee can take over the supervision.

H. Public Health Support

1. Reception and Care

Following decontamination, if necessary, at the reception center, an initial registration of evacuees will be accomplished by the Louisiana Department of Children and Family Services. Health and medical care will be provided to evacuees as necessary. Evacuees will be directed to shelters made available through the American Red Cross.

A second, more detailed registration of evacuees will be accomplished at the shelters by the American Red Cross in conjunction with the Louisiana Department of Children and Family Services. Registration data will be tabulated and submitted to the Emergency Operations Center. Food, clothing, and health and medical care will be provided to the evacuees as needed. When the situation subsides, evacuees will be allowed to re-enter the affected area in accordance with procedures described in the General Plan.

2. Medical

Injured evacuees may be treated at the St. Charles Parish Hospital. Contaminated injured evacuees will be treated at West Jefferson Medical Center or Ochsner Medical Center, whose staff is equipped to handle contaminated individuals. In addition, St. Charles Parish Emergency Medical Services is trained in the transport of victims of radiological incidents.

I. Appendices

Appendix I-1: Responsibilities for Radiological Emergency Implementing Procedures.

Appendix II-2: List of St. Charles Standard Operating Procedures.

Appendix II-3: St. Charles Standard Operating Procedure NUREG 0654 Cross Reference.

APPENDIX I-1

Responsibilities for Radiological Emergency Implementing Procedures

Implementing Procedures have been prepared by functional areas. Staff responsibilities associated with functional areas are as follows. (Specific areas of responsibility/coordination appear in the appropriate Implementing Procedures.)

1. Public Alert/Notification
 - a. Parish President
 - b. Emergency Preparedness Director
 - c. School Services Officer
 - d. Health/Medical Officer
 - e. Law Enforcement Officer
 - f. Communication Officer

2. Public Information
 - a. Parish President
 - b. Emergency Preparedness Director
 - c. Public Information Officer

3. Radiological Exposure Control
 - a. Parish President
 - b. Emergency Preparedness Director
 - c. Radiological Officer

4. Transportation Services
 - a. Emergency Preparedness Director
 - b. Transportation Officer
 - c. School Services Officer
 - d. Health/Medical Officer

5. School Services
 - a. Emergency Preparedness Director
 - b. School Services Officer
 - c. Transportation Officer

6. Health and Medical Services
 - a. Emergency Preparedness Director
 - b. Health/Medical Officer
 - c. Transportation Officer
 - d. Radiological Officer

7. Fire Services
 - a. Emergency Preparedness Director
 - b. Fire Services Officer
 - c. Radiological Officer

8. Law Enforcement Services
 - a. Emergency Preparedness Director
 - b. Law Enforcement Officer
 - c. Radiological Officer
 - d. Public Works Officer

9. Public Works
 - a. Emergency Preparedness Director
 - b. Public Works Officer
 - c. Radiological Officer
 - d. Law Enforcement Services Officer

APPENDIX I-2

List of St. Charles Parish Radiological Emergency Implementing Procedures

<u>St. Charles Parish Radiological Emergency Implementing Procedures</u>
EMERGENCY OPERATIONS CENTER
EMERGENCY OPERATIONS CENTER - Attachment 1: Notification
EMERGENCY OPERATIONS CENTER - Attachment 2: EOC Activation
EMERGENCY OPERATIONS CENTER - Attachment 3: Communication
EMERGENCY OPERATIONS CENTER - Attachment 4: Security
EMERGENCY OPERATIONS CENTER - Attachment 5: Message Center
EMERGENCY OPERATIONS CENTER - Attachment 6: Operational Hotline
EMERGENCY OPERATIONS CENTER - Attachment 7: Decision-Making
EMERGENCY OPERATIONS CENTER - Attachment 8: Public Alert/Notification
PUBLIC INFORMATION
RADIOLOGICAL EXPOSURE CONTROL
TRANSPORTATION SERVICES
SCHOOL SERVICES
HEALTH AND MEDICAL SERVICES
FIRE SERVICES
LAW ENFORCEMENT SERVICE
PUBLIC WORKS
CORRECTIONAL CENTER PROCEDURE

APPENDIX I-3

St. Charles Parish Implementing Procedure NUREG-0654 Cross Reference

Procedure	NUR EG	Section(s) Implemented
Emergency Operations Center	A.1.d	Enclosure I, Sections C and D
	A.2.a	Enclosure I, Sections A, B, D and Figure D-2
	D.4	Attachment 1, Section IV, Chapter 1; Enclosure I, Section D and E
	E.6	LPRRP, Chapter 4, Section IV; Enclosure I, Sections D.1.c.ii.12, F.7-8, Figure F-2 and F-2a and G
Emergency Operations Center Attachment 1: Notification	A.4	Enclosure I, Section D.1 and E
	D.4	Attachment 1, Section IV, Chapter 1; Enclosure I, Section D and E
Emergency Operations Center Attachment 2: EOC Activation	A.4	Enclosure I, Section D.1 and E
	D.4	Attachment 1, Section IV, Chapter 1; Enclosure I, Section D and E
	H.3	Attachment 1, Section II, Enclosure I, Section C
	H.4	Attachment 1, Section II, Enclosure I, Section E
Emergency Operations Center Attachment 3: Communication	A.1.e	Enclosure I, Sections E, F.1 and F.2
	A.2.a	Enclosure I, Sections A, B, D and Figure D-2
	C.1.c	LPRRP, Basic Plan, Section VII.A.4; Attachment 1, Sections II.G, II.I and II.M; Appendix I Sections II.e, III.a.i and ii, and IV; Enclosure I, Section F
	D.4	Attachment 1, Section IV, Chapter 1; Enclosure I, Section D and E
	E.1	Attachment 1, Appendix A, Tab A and B, and Appendix I.III.b; Enclosure I, Section E
	E.2	LPRRP, Chapter 4, Section IV; Enclosure I, Sections E & F,
	F.1.e	Enclosure I, Sections E, F.2 - F.6
Emergency Operations Center Attachment 4: Security	H.3	Attachment 1, Section II, Enclosure I, Section C
Emergency Operations Center Attachment 5: Message Center	D.4	Attachment 1, Section IV, Chapter 1; Enclosure I, Section D and E
Emergency Operations Center Attachment 6: Operational Hotline	A.1.e	Enclosure I, Sections E, F.1 and F.2
	E.1	Attachment 1, Appendix A, Tab A and B, and Appendix I.III.b; Enclosure I, Section E
Emergency Operations Center Attachment 7: Decision-Making	A.2.a	Enclosure I, Sections A, B, D and Figure D-2
	D.4	Attachment 1, Section IV, Chapter 1; Enclosure I, Section D and E
	J.10.d	Enclosure I, Sections G and H
	J.10.g	Attachment 1, Section II.A.14; Enclosure I, Section G.8
	J.10.i	Attachment 1, Appendix D and Appendix I.V.a; Enclosures I-II, Section D.1.g

Emergency Operations Center Attachment 8: Public Alert/Notification	D.4	Attachment 1, Section IV, Chapter 1; Enclosure I, Section D and E
	E.5	Attachment 1, Section IV, Chapter 2.B.2 and Appendix H; Enclosure I, Sections E and F
	E.7	LPRRP, Chapters 4 and 5; Attachment 1, Section IV, Chapter 2, Tab A; Enclosure I, Section E.5
	J.10.c	Attachment 1, Appendix H; Enclosure I, Sections E.5 and F.7, and Appendix I-3
Public Information	A.2.a	Enclosure I, Sections A, B, D and Figure D-2
	D.4	Attachment 1, Section IV, Chapter 1; Enclosure I, Section D and E
	E.5	Attachment 1, Section IV, Chapter 2.B.2 and Appendix H; Enclosure I, Sections E and F
	G.4.a	Attachment 1, Section IV, Chapter 2.B.2.g-i, Appendix I.VI; Enclosure I, Section D.1.c.ii and F.2, 5-6
	G.4.c	LPRRP, Chapter 5, Section IV.B.4; Attachment 1, Section IV, Chapter 2.B.2.j-k
Radiological Exposure Control	A.2.a	Enclosure I, Sections A, B, D and Figure D-2
	D.4	Attachment 1, Section IV, Chapter 1; Enclosure I, Section D and E
	H.7	LPRRP, Chapter 6, Tab 3, Paragraph G and Table 1, Tab 4; Attachment 1, Section IV, Chapter 3.B.3
	J.10.e	LPRRP, Chapter 9, Tab 1; Attachment 1, Section IV, Chapter 5; Enclosure I, Section D.1.c
	J.12	LPRRP, Chapter 9, Section IV.B; Attachment 1, Section IV, Chapter 5.B.1.c & Tab A; Enclosure I, Sections G.8 & H.1
	K.3.a	LPRRP, Chapter 6, Tab 3, Table 1; Chapter 9, Sections III.A, V.B. and V.D; Attachment 1, Section IV, Chapter 5
	K.3.b	LPRRP, Chapter 7, Section V.D.5; Attachment 1, Section IV, Chapter 5
Transportation Services	A.2.a	Enclosure I, Sections A, B, D and Figure D-2
	D.4	Attachment 1, Section IV, Chapter 1; Enclosure I, Section D and E
	J.10.d	Enclosure I, Sections G and H
	J.10.g	Attachment 1, Section II.A.14; Enclosure I, Section G.8
	J.10.j	Enclosure I, Sections D.1.d & g, D.2.d.i, Figure D-1 and D-2, G.1 and G.3;
	J.10.k	Enclosure I, Section D.1.d&g, Section G.8
	J.10.h	LPRRP, Chapter 7, IV.B.4.a.iii; Enclosure I, Sections D.1.c.i.9, D.1.f.iii, G. 3 and Figure G-1
School Services	A.2.a	Enclosure I, Sections A, B, D and Figure D-2
	D.4	Attachment 1, Section IV, Chapter 1; Enclosure I, Section D and E
	J.10.d	Enclosure I, Sections G and H
	J.10.h	LPRRP, Chapter 7, IV.B.4.a.iii; Enclosure I, Sections D.1.c.i.9, D.1.f.iii, G. 3 and Figure G-1

Health and Medical Services	A.2.a	Enclosure I, Sections A, B, D and Figure D-2
	D.4	Attachment 1, Section IV, Chapter 1; Enclosure I, Section D and E
	J.10.d	Enclosure I, Sections G and H
	J.10.g	Attachment 1, Section II.A.14; Enclosure I, Section G.8
	J.10.h	Attachment 1, Appendix H; Enclosure I, Sections D.1.c.i.9, G.3 and Figure G-1
Fire Services	A.2.a	Enclosures I, Sections A, B, D and Figure D-2
	D.4	Attachment 1, Section IV, Chapter 1; Enclosure I, Section D and E
	J.10.c	Attachment 1, Appendix H; Enclosure I, Sections E.5 & F.7
Law Enforcement Service	A.2.a	Enclosure I, Sections A, B, D and Figure D-2
	C.1.c	LPRRP, Basic Plan, Section VII.A.4; Attachment 1, Sections II.G, II.I and II.M; Appendix I Sections II.e, III.a.i and ii, and IV; Enclosure I, Section F
	D.4	Attachment 1, Section IV, Chapter 1; Enclosure I, Section D and E
	J.2	Attachment 1, Section II.P and Appendix D; Enclosure I, Section G.8
	J.10.c	Attachment 1, Appendix H; Enclosure I, Sections E.5 and F.7
	J.10.g	Attachment 1, Section II.A.14; Enclosure I, Section G.8
	J.10.i	Attachment 1, Appendix D and Appendix I.V.a; Enclosures I-II, Section D.1.g
	J.10.j	Enclosure I, Sections D.1.d & g, D.2.d.i, Figure D-1 and D-2, G.6 and G.8
	J.10.k	Enclosure I, Section D.1.d&g, Section G.3
Public Works	A.2.a	Enclosure I, Sections A, B, D and Figure D-2
	C.1.c	LPRRP, Basic Plan, Section VII.A.4; Attachment 1, Sections II.G, II.I and II.M; Appendix I Sections II.e, III.a.i and ii, and IV; Enclosure I, Section F
	D.4	Attachment 1, Section IV, Chapter 1; Enclosure I, Section D and E
	J.10.g	Attachment 1, Section II.A.14; Enclosure I, Section G.8
	J.10.i	Attachment 1, Appendix D and Appendix I.V.a; Enclosures I-II, Section D.1.g
	J.10.j	Enclosure I, Sections D.1.d & g, D.2.d.i, Figure D-1 and D-2, G.6 and G.8
	J.10.k	Enclosure I, Section D.1.d&g, Section G.3
Correctional Center Procedure	D.4	Attachment 1, Section IV, Chapter 1; Enclosure I, Section D and E
	J.10.d	Enclosure I, Sections G and H

This Page Intentionally Left Blank

**ENCLOSURE II
TO ATTACHMENT 1**

**ST. JOHN THE BAPTIST PARISH
RADIOLOGICAL EMERGENCY RESPONSE PLAN**

ENCLOSURE II
ST. JOHN THE BAPTIST PARISH
TABLE OF CONTENTS

		Page
A	Introduction	1154154 24
B	Authority	1154154 24
C	Direction and Control	1154154 24
D	Organization and Responsibilities	1184184 25
E	Notification and Activation	1304304 37
F	Emergency Communications	1334334 44
G	Protective Response for the Plume Exposure Pathway	1394394 46
H	Public Health Support	1464464 52
I	Appendices	
I-1	Responsibilities for Radiological Emergency Implementing Procedures	1474474 53
I-2	List of St. John the Baptist Parish Radiological Emergency Implementing Procedures	1494494 55
I-3	St. John the Baptist Parish Implementing Procedure NUREG-0654 Cross Reference	1504504 56

Figures

D-1	St. John the Baptist Parish Organizational Chart	1284284 35
D-2	St. John the Baptist Parish Emergency Function and Responsibility Matrix	1294294 36
F-1	St. John the Baptist Parish Communications System	1374374 44
F-2	Facilities with Special Notification Devices	1384384 45
G-1	St. John the Baptist Parish Reception Center and Shelter Locations	1454454 54

A. Introduction

This Enclosure together with the General Plan of Attachment 1, Louisiana Peacetime Radiological Response Plan (LPRRP), constitutes the entire document to guide the direction and control of local government responses to an emergency situation at Waterford 3 Steam Electric Station. This Enclosure addresses preparedness criteria and planning elements specific for St. John the Baptist Parish. It outlines the direction and control, the responsibilities for the performance of Parish emergency operations and support activities, the means for timely warning and protective actions as needed for citizens threatened by a release of radioactive material, and the means of integrating the actions of local government with those of the other parishes, the State of Louisiana, and EOI - Waterford 3.

Although the construction of nuclear power facilities provides substantial safeguards against the occurrence of radiological emergencies, this Enclosure provides an additional level of safety to ensure protection of the public through a coordinated emergency response by local government.

B. Authority

Authority for the development and implementation of this Enclosure is consistent with and pursuant to the provisions of St. John the Baptist Parish Civil Defense Ordinance of 1964, as amended.

C. Direction and Control

St. John the Baptist Parish, when affected by an emergency at Waterford 3 Steam Electric Station, is responsible for initial radiological emergency response operations within its jurisdiction. The Parish President has the authority to declare a State of Emergency for St. John the Baptist Parish giving him full control of emergency response. The Parish will coordinate such actions through its Director of Emergency Preparedness (DEP) and through the Parish emergency response organization. The DEP will provide the necessary direction and control to initiate actions and conduct emergency operations required to protect the population of St. John the Baptist Parish from an emergency at Waterford 3 Steam Electric Station. In his absence, responsibility will be delegated according to Parish procedures for continuity of Parish government. The Emergency Operations Center (EOC) for St. John the Baptist Parish is located at, 1801 W. Airline Highway, LaPlace. The EOC contains an emergency communications center and provides adequate space for staff and equipment such as tables, telephones, and status boards. The Parish EOC has generators for backup power, as noted in St. John the Baptist Parish Emergency Operations Plan Standard Operating Procedure: Emergency Operations Center – Attachment 3: EOC Activation – Enclosure 6. The St John the Baptist Parish alternate EOC is the St. James Parish EOC located at 5800 LA Hwy 44 in Convent, Louisiana.

Generally, Staff assignments to the EOC may include representatives of the following:

Comment [H1]: Fix formatting after turning off track changes

1. Operations Staff

- Parish President
- Emergency Preparedness Director
- Emergency Preparedness Deputy Director(s)
- EOC Operations Officer
- Law Enforcement and Traffic Control Officer
- Communications Officer
- Fire and Rescue Officer
- Public Information Officer
- Health and Medical Officer
- Radiological Officer
- School Services Officer
- Transportation Officer
- Public Works Officer
- Public Utilities Officer

2. Resource Staff

- Resource Support Officer(s)
- Human Welfare Services Officer
 - Council on Aging Representative
 - American Red Cross Representative
- Damage Assessment Officer
- Finance and Logistics Officer
- Message Center Coordinator
- Operational and Support Assistants
- Parks and Recreation Department Representative
- Training Officer
- Planning Officer
- Communication Assistants and Amateur Radio Operators
- Technical Advisors, Engineer(s)

- State Liaison Representative(s):
 - Louisiana State Police
 - Governor's Office of Homeland Security & Emergency Preparedness
 - Louisiana Department of Environmental Quality
 - Louisiana Department of Health and Hospitals
 - Parish Health Unit Director
 - Louisiana Department of Children & Family Services
 - Louisiana Department of Agriculture and Forestry
 - USDA Parish Emergency Board Chairperson
 - Louisiana Department of Wildlife and Fisheries

State agency support and technical analysis will be provided through the Louisiana Department of Environmental Quality (LDEQ) and the Governor's Office of Homeland Security and Emergency Preparedness (GOHSEP). The LDEQ will be responsible for offsite radiological monitoring and analysis and protective action recommendations. The GOHSEP will coordinate all state resources through the appropriate state agencies. In the event the emergency situation is beyond local control and response capabilities, the Governor may issue a "Declaration of Emergency," whereby any or all emergency operations would then be under the direction of the Governor.

D. Organization and Responsibilities

Local organizations with emergency responsibilities are identified in the following sections. Each organization is responsible for assuring continuity of resources to support emergency operations for a protracted period. Each organization or suborganization having an operations role is responsible for maintaining its own Emergency Implementing Procedures (EIPs) which describe detailed emergency actions to be performed.

The relationships between the local organizations are graphically depicted in Figure D-1. As shown, local organizations are coordinated by the Parish Director of Emergency Preparedness with the exception of the Parish Health Unit and Louisiana Department of Children and Family Services, which are coordinated by the State Department of Health and Hospitals; however, the DEP may provide limited coordination, if required by the circumstances at the time of the emergency, with the approval of the State Department of Health and Hospitals. The primary and support responsibilities of the local organizations for key emergency functions are specified in the Emergency Function and Responsibility Matrix shown in Figure D-2.

1. Local Government

a. Parish President

The St. John the Baptist Parish President has the following responsibilities.

- i. The safety and well being of persons in the Parish.
- ii. Maintenance and implementation of the St. John the Baptist Parish Radiological Emergency Response Plan through the Parish Department of Public Safety for response to an accident at Waterford 3 Steam Electric Station.
- iii. Initiating actions and providing direction and control at the local level.
- iv. Conducting emergency operations through the Director of Emergency Preparedness.
- v. Through the advice of LDEQ, authorizing emergency workers to incur exposure in excess of general public Protective Action Guidelines (PAGs).
- vi. Management of resources and facilities within the parish.
- vii. Liaison to state agencies, military and industry.
- viii. Designating a chief spokesperson and approving official news releases for the Parish.

- b. The Parish Attorney is responsible for:
 - i. Providing legal advice and counsel to the DEP in the interpretation of Parish, State, and Federal law relating to disaster preparedness under a given circumstance.
 - ii. Ensuring legality of any and all emergency laws and ordinances passed by the Parish Council.
 - iii. Providing an emergency representative to the Parish EOC, as requested, during an emergency.

c. St. John the Baptist Parish Emergency Preparedness

The Emergency Preparedness Office, under the direction of the Director, is responsible for the development and maintenance of procedures to implement this plan.

- i. The Director of Emergency Preparedness is responsible for:
 - 1) Acting as the Chief of Staff for the Parish President and directing and coordinating Parish emergency response to an accident at Waterford 3 Steam Electric Station.
 - 2) Serving as the liaison between the Parish President and emergency response forces.
 - 3) Supervising the development and maintenance of plans and procedures for Parish response to an accident at Waterford 3 Steam Electric Station, including quarterly verification and update of emergency implementing procedures telephone numbers, and an annual review and update of emergency implementing procedures. See St. John the Baptist Parish ESF #10 [Emergency Management] –Radiological Officer Procedures.
 - 4) Supervising the development and implementation of training and public information and education programs within the Parish.
 - 5) Maintaining an adequate supply of radiation monitoring equipment through a program of equipment inspection, inventory, and operational checks.
 - 6) Maintaining an adequate supply of KI and ensuring the KI is stored at room temperature.

- 7) Developing and maintaining contracts and agreements necessary to implement the Parish radiological emergency response plan.
 - 8) Ensuring the coordination of special facility (e.g., schools, nursing homes, jails, and industry) emergency procedures and protective actions with Parish plans in response to an accident at Waterford 3 Steam Electric Station.
 - 9) Ensuring notification and coordination of all local agencies supporting emergency operations, as required, including the coordination with GOHSEP for activation and use of appropriate reception centers and shelters should an evacuation be necessary.
 - 10) Coordinating overall emergency operations to protect life and property at the local level.
 - 11) Coordinating with GOHSEP and LDEQ in supporting emergency operations at the local level.
 - 12) Activating the public alert system, ensuring warning and notification of persons within the 10-mile EPZ, as necessary. For more information, see the St. John the Baptist Parish Emergency Operations Plan Standard Operating Procedure: Emergency Operations Center [ESF #5 Emergency Management] – Attachment 4: Public Alert/Notification.
 - 13) Maintaining adequate communications to conduct and coordinate local emergency operations.
 - 14) Coordinating with the Public Information Officer to disseminate public information.
 - 15) Appointing a Public Information Officer, Radiological Officer, Communications Officer, and Health/Medical Officer to assist him with certain functions.
- ii. The Public Information Officer is responsible for:
- 1) Participating in the Parish-level program aimed at educating the public on response to an accident at Waterford 3 Steam Electric Station.
 - 2) Providing liaison with news media organizations

prior to and during an emergency.

- 3) Assisting in preparation of news releases.
- 4) Coordinating with the Joint Information Center.

iii. The Radiological Officer is responsible for:

- 1) Establishing arrangements for the surveying and decontamination of emergency personnel and vehicles, and coordinating this effort with LDEQ.
- 2) Distribution of dosimetry devices to emergency personnel and maintenance of related records.
- 3) Ensuring that emergency personnel in the field are informed of radiological conditions and necessary protective actions, as necessary.
- 4) Maintaining an inventory of radiological equipment within the parish.
- 5) Gathering radiological information and keeping records on the radiological response efforts.
- 6) Distribution of potassium iodide to emergency personnel and maintenance of related records.

iv. The Communications Officer is responsible for:

- 1) Ensuring the maintenance and availability of communication equipment and all call lists necessary to provide alert/notification and communications support in an emergency.
- 2) Initiating the communication of the alert/notification message to emergency response organizations.
- 3) Establishing and maintaining a communications system capable of linking the St. John the Baptist Parish EOC with Waterford 3 Steam Electric Station, State response agencies, Parish emergency response agencies, and with St. Charles Parish.
- 4) Recruiting and training radio operators and telephone attendants.

v. The Health/Medical Officer, under the direction of the Director, is responsible for:

- 1) Providing rescue and emergency medical services, including the transportation of victims

of radiological incidents.

- 2) Providing transportation support for non-ambulatory evacuees.
- 3) Coordinating with hospitals from adjacent jurisdictions.
- 4) Coordinating with the Parish Health Unit and local medical practitioners.
- 5) Providing medical services assistance to other W3P, as needed.
- 6) Maintaining communications with the Parish Sheriff's Office.

d. Sheriff's Office

The Sheriff's Office is the primary law enforcement and traffic control agency within St. John the Baptist Parish. The Sheriff, as the Chief Law Enforcement Officer, will be responsible for:

- i. Managing the evacuation of portions of the Parish within the 10-mile EPZ.
- ii. Direction and control of traffic within the Parish.
- iii. Direction and control of traffic coming from other W3P in transit to reception centers in nearby support parishes.
- iv. Preservation of law and order.
- v. Instituting access control and area security.
- vi. Assisting in performing search and rescue work, as required.
- vii. Assisting in warning residents and transients, as required.
- viii. Providing assistance to, and liaison with outside law enforcement agencies, as required.
- ix. Coordination with local and state law enforcement agencies to provide emergency support operations.
- x. Emergency communications support.
- xi. Providing a representative to the parish EOC, as requested, during an emergency.
- xii. Providing protective measures for parish prison inmates.

e. Volunteer Fire Departments

The Volunteer Fire Departments within St. John the Baptist Parish support Emergency Preparedness by providing technical assistance, manpower, and equipment to aid disaster victims within the Parish. Under the direction of the respective Chiefs, the Volunteer Fire Departments are responsible for:

- i. Providing fire and rescue aid.
- ii. Assisting in warning and notification of the public within the EPZ, if needed.
- iii. Providing rescue and emergency medical services.
- iv. Providing a representative to the EOC, as requested, during an accident.

f. School Board

The Parish School Board, under the direction of the Superintendent, and private school principals, are responsible for:

- i. Providing school buses and drivers for evacuation of students and school personnel from schools (when school is in session).
- ii. Providing transportation for assisting evacuation of residents and transients from the affected areas.
- iii. Establishing arrangements for the care of school students at reception centers or host schools until students are picked up by parents.
- iv. Maintaining communications with the Parish EOC on operations and support needs and coordinating with other agencies on support services.
- v. Providing a School Services Officer to the Parish EOC, as requested, during an accident.

g. St. John the Baptist Parish Public Works Department

The St. John the Baptist Parish Public Works Department, under the direction of the Director, is responsible for:

- i. Assisting in traffic control and re-entry/recovery operations by providing signs and barriers.
- ii. Coordinating resources available to the Parish.
- iii. Providing highway maintenance and clearing impediments to allow road passage.
- iv. Coordinating with the State Department of Transportation and Development and Office of Highways personnel for additional assistance as

required.

- v. Providing personnel with knowledge of the area to act as guides for LDEQ response personnel (field teams), as necessary.
- vi. Providing an emergency representative to the Parish EOC, as requested, during an accident.

2. Parish-Level State Support Agencies

a. Parish Health Unit (DHH)

In conjunction with the State Department of Health and Hospitals, the Director of the Parish Health Unit is responsible for:

- i. Assisting in the coordination of required medical services.
- ii. Assisting with expedient acquisition of radio-protective drugs (i.e., KI) and for their use by emergency works and institutionalized persons, if required.
- iii. Assisting in collection of water and milk samples, and transportation of such samples for laboratory analysis.
- iv. Maintaining communications with the Parish EOC on operations and support needs and coordinating with other agencies on support services as needed.
- v. Providing an emergency representative to the Parish EOC, as requested, during an emergency.
- vi. In coordination with the FDA, providing for the collection of water, milk, sewage, and food samples from food processing plants, and for the transportation of such samples for laboratory analysis, during a radiological emergency.
- vii. In coordination with the Department of Agriculture and Forestry, USDA, and LDEQ, when requested, providing guidance and advice on identifying storing and disposing of contaminated agricultural products.
- viii. In coordination with the FDA, providing guidance for the diversion or destruction of radiologically contaminated food, crops, and milk during an accident.
- ix. Providing for the inspection of shelter facilities to ensure that adequate sanitary, water, and food service is available for the number of people assigned.
- x. Providing guidance and advice to water purification facilities of an accident and advice on the appropriate

protective action.

- xi. Supporting the relocation of hospital patients from hospitals within the risk areas to identified support hospitals, during an accident.
- xii. Assisting in the provision of mass emergency medical transportation resources to be used for the relocation of hospital patient during an accident.
- xiii. Supporting risk health care facilities and risk Parishes with identification and coordination of medical resources.

b. Parish Extension Service

The St. John the Baptist Parish Extension Service, under the direction of the County Agent, in cooperation with the State Department of Agriculture & Forestry and USDA, is responsible for:

- i. Providing general assistance and coordination with USDA federal disaster assistance programs to include crop loss, livestock feed, and other emergency measures as applicable.
- ii. Disseminating agricultural advisories to affected Parish farmers and other agribusinesses during an accident at Waterford 3 Steam Electric Station.
- iii. Assessing damage to Parish crops and livestock in the event of an emergency.

c. Louisiana Department of Children and Family Services

The Louisiana Department of Children and Family Services, under the direction of the Parish Administrator and in conjunction with the American Red Cross, is responsible for:

- i. Registration of evacuees at reception centers and shelters.
- ii. Coordinating emergency shelter, feeding and clothing, and social services for displaced persons, as necessary, with the American Red Cross.
- iii. Providing assistance to area hospitals, nursing homes, and OHSEP personnel, as requested, for social services, special care arrangements and transportation assistance.
- iv. Providing a representative to the EOC, as requested, during an accident.
- v. Acting as liaison between the Parish EOC and support

parish reception centers and shelters.

- vi. Establishing a Parish evacuee locator service in coordination with support parish reception centers during an emergency.

d. State Police (Troop B)

In conjunction with the State Department of Public Safety and Corrections, the State Police, under the direction of the Troop Commander, will be responsible for the following:

- i. In coordination with the Sheriff, assisting in traffic control operations during an evacuation, particularly on State or Federal highways.
- ii. In coordination with the Sheriff, assisting in establishing access control to affected areas.
- iii. In coordination with the Sheriff, assisting in security and law enforcement support for affected areas.
- iv. Providing communications support, if necessary.
- v. Providing a representative in the Parish EOC, as requested, to coordinate State Police support with the State EOC.

3. Other Organizations

a. Ochsner Medical Complex

Ochsner Medical Complex, under the direction of the Administrator, is responsible for:

- i. Providing health and medical care services to non-contaminated injured individuals. The primary hospital for medical support for contaminated injured persons will be provided by Ochsner Medical Center or West Jefferson Medical Center. The secondary or backup hospital is Our Lady of the Lake Regional Medical Center.
- ii. Maintaining current emergency management plans and procedures that are consistent with Parish emergency plans and implementing procedures.

b. Twin Oaks Nursing Home

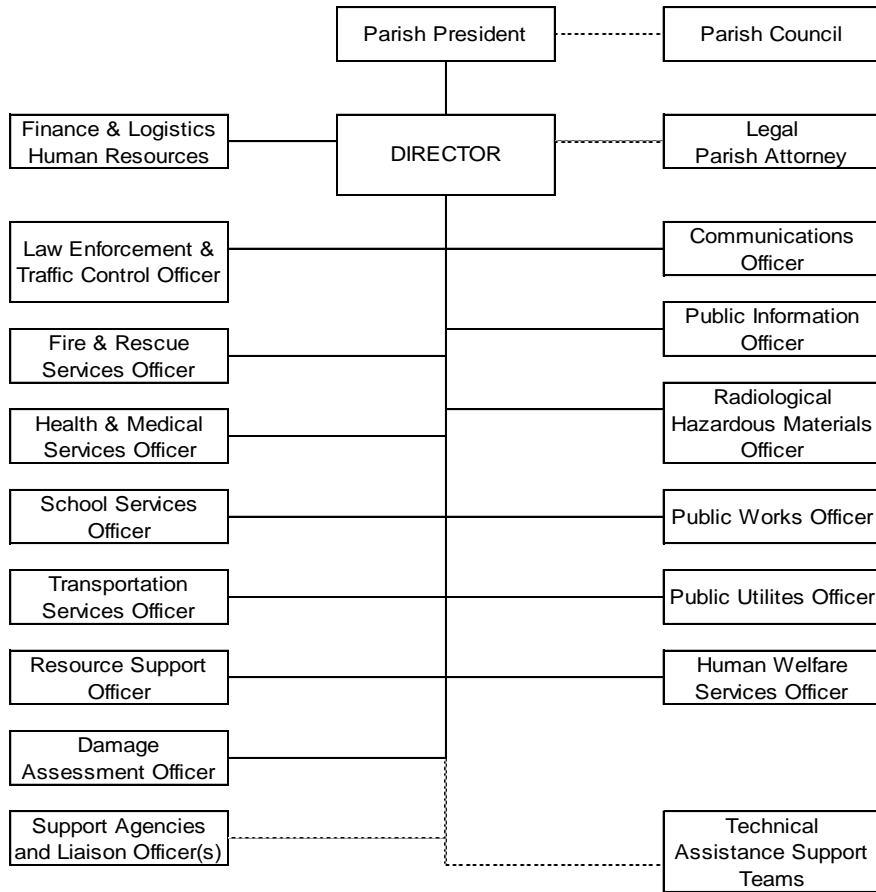
The Twin Oaks Nursing Home, under the direction of the Administrator, is responsible for maintaining current emergency management plans and procedures that are consistent with Parish emergency plans and implementing procedures.

c. Southeast Louisiana (SELA) War Veterans Home

The SELA War Veterans Home, under the direction of the Administrator, is responsible for maintaining current emergency management plans and procedures that are consistent with Parish emergency plans and implementing procedures.

FIGURE D-1

St. John The Baptist Parish Organization Chart



_____ Direct Relationship
- - - - - Coordinating Relationship

FIGURE D-2

**St. John the Baptist Parish
Emergency Function and Responsibility Chart**

Emergency Function and Responsibility Chart Figure 2 P = Primary S = Support	Parish President	Emerg. Prep. Director	Operations Officer	Communications Officer	Fire Officer	Law Enforcement Officer	Health & Medical Officer	Public Works Officer	Public Info. Officer	Transportation Officer	Radiological Officer	School Services Officer	LDEQ	Support Parishes
Direction & Control	P	S												
Notification		P	S	S	S	S				S	S	S		
Communications		S	S	P	S	S								
Public Alert/Notification		P		S	S				S					
Public Information	S	S	S						P					
Accident Assessment											S		P	
Public Health							P				S			
Social Services							S					S		
Fire & Rescue				S	P	S	S							
Traffic Control				S	S	P		S						
Access Control				S	S	P		S						
Emergency Medical Services				S	S		P							
Law Enforcement						P	S							
Transportation							S	S		P		S		
Protective Response	P	S	S	S	S	S	S	S	S	S	S	S	S	
Radiological Exposure Control							S				P			
Food & Water Purity							P	S						
Shelter & Care							S	S			S	S		P
Highway Maintenance								P						
Security						P								
Reentry & Recovery	P	S	S	S	S	S	S	S	S	S	S	S	S	

E. Notification and Activation

Once an emergency classification has been declared at W-3, the Control Room will notify the Parish warning points. Shifts of dispatchers at the Parish Communication Center will provide for 24-hour per day coverage of the communications equipment. Notification messages, including those received from entities other than the licensee, will be verified by the dispatcher in accordance with established procedures. The primary means of notification is the W3SES Operational Hotline; the secondary means of notification is the commercial telephone system; the third means of notification is the Emergency Preparedness Radio System (See Section F - Emergency Communications).

When the Communications Center in the Parish EOC is activated, the Parish's responsibility for receiving notifications will shift to the EOC Communications Center.

This emergency response plan will be activated by the Parish President through the DEP. Local response organizations will be notified of the emergency by the Parish. Such notification messages will specify whether the organization is to standby, or start to mobilize emergency response personnel. Emergency response personnel will be called to duty using the alert/notification call system of the response agency. Support agencies will be alerted by the agency they are supporting. Should mobilization be required, emergency response personnel will report to their agency response center for specialized equipment and further instructions.

During an emergency at W3SES, St. John the Baptist Parish will not send personnel to the W3SES EOF.

A roster of emergency personnel contacts are located in the St. John the Baptist Parish Emergency Operations Plan, Emergency Operations Center Standard Operating Procedure, Attachment 1, Staff Notification Procedure. Upon arrival of the key staff defined in this procedure, the EOC is declared operational.

- The sequences for anticipated notifications and activation of emergency response personnel for each emergency classification are provided below. Details of notification and activation consistent with the emergency classification scheme are provided in established procedures.

1. Notification of Unusual Event

a. Notification

Upon receipt of a classification of Notification of Unusual Event by W-3, the Public Safety Dispatcher will notify the DEP and other key

individuals consistent with this classification and in accordance with established procedures utilizing the paging system described in Section F. During normal working hours, notification is simultaneous to the Emergency Operation Center and the Parish Communication Center; after normal hours, the Public Safety Dispatcher provides notification to the Director of Emergency Preparedness.

b. Activation

No activation of emergency response personnel or emergency facilities is anticipated for the Notification of Unusual Event. However, such action can be taken if deemed appropriate at the time. The DEP will monitor the situation and be prepared to escalate to a higher level of response if the situation warrants, or standby until closeout of the emergency.

2. Alert

a. Notification

Upon receipt of a classification of Alert by W-3, the Public Safety dispatcher will notify the DEP (if not previously notified), other key individuals, and other supporting response organizations consistent with this classification and in accordance with established procedures utilizing the paging system described in Section F. The organizations will, in turn, alert to a standby status those emergency personnel in their respective organizations by telephone or two-way radio. Radio stations WWL-AM/ WLMG-FM (the EAS station for St. John Parish) will be alerted to standby by the EOC. For more information, see St. John the Baptist Parish Emergency Operations Plan Standard Operating Procedure: Emergency Operations Center [ESF #5 Emergency Management] – Attachment 2–Communications Procedure and Attachment 12- Public Information.

b. Activation

Upon notification, the DEP and key staff will augment the Parish's emergency response resources by bringing the Parish EOC to a standby status and activating the Communications Center with the Parish EOC. All supporting response organizations will maintain standby status until closeout or escalation of the emergency.

3. Site Area Emergency

a. Notification

Upon receipt of a classification of Site Area Emergency by W-3, the Public Safety dispatcher will notify the DEP (if not previously notified), other key individuals, and other supporting response organizations consistent with this classification and in accordance with established procedures. The paging system described in Section F will be utilized. The organizations will, in turn, notify key emergency personnel in their respective departments by telephone or two-way radio. Radio stations WWL-AM/WLMG-FM (the EAS radio station) will be notified and brought to standby status (if not previously alerted) and, if appropriate, given messages to broadcast consistent with the situation via St. John the Baptist Parish EOC.

b. Activation

Upon notification, the DEP will activate the Parish EOC and other emergency response centers as appropriate. The EOC Staff and resource staff will be activated for protracted (12 hour shifts) operations. The Operations Staff Officer will implement duty roster for extended stay for EOC Staff and support personnel. A Parish representative may be dispatched to the Waterford 3 EOC if the DEP feels conditions warrant such action at this time. All local emergency response organizations will report to their duty stations. Traffic control and transportation support personnel will prepare for possible evacuation and reception centers will prepare for opening should conditions warrant. Radio station WWL-AM/WLMG-FM (the EAS station for St. John Parish) will provide the public in the affected areas of St. John the Baptist Parish out to a 10-mile radius of Waterford 3 with periodic updates of the emergency.

4. General Emergency

a. Notification and Activation

Upon receipt of a classification of General Emergency by Waterford 3, the Public Safety dispatcher will notify the DEP (if not previously notified), other key individuals, and other supporting response organizations in accordance with established procedures, and emergency response centers will be activated. The Alert Notification System will be activated in the Parish.

b. All other response actions will be as for a Site Area Emergency.

5. Notification of the Public

a. The primary alert system for St. John the Baptist Parish is comprised of a combination of fixed sirens, helicopters fitted with mounted

alerting devices, the Industrial Mutual Aid Radio net, cable TV override, automatic telephone dialing devices, school board radios, and the U.S. Coast Guard for the notification of ships along with the Mississippi River.

- b. Upon determination that conditions at Waterford 3 warrant protective actions, the DEP will issue instructions for the activation of the primary alert system.
- c. Should an element of the primary alert system fail, the DEP has available a number of backup methods including route alerting in populated and wetland areas and commercial telephone.
- d. St. John Parish will contact WWL-AM/WLMG-FM Newsroom Hotline for release of EAS messages. The Hotline is assessible 24 hours a day, 7 days a week.
- e. The default rebroadcast time for St John Parish is 15 minutes, however, circumstances could dictate a shorter or longer rebroadcast frequency, at the discretion of the St. John Parish DEP.

Comment [H2]: Copy to St. Charles Parish

F. Emergency Communications

This section describes the various communications systems available for prompt communications among principal organizations and emergency personnel, and to the public. See the St. John the Baptist Parish Emergency Operations Plan Standard Operating Procedures: ESF #5 Emergency Management] – Attachment 2–Communications Procedure and ESF #12 -Public Information Procedures. A summary of communications systems available is shown in Figure F-1.

The Parish EOC provides the focus of communications for emergency operations. Direction, control and coordination emanates from the EOC through the Parish President and the DEP. Data and feedback relevant to the administration of emergency operations will be directed to the EOC.

1. W3SES Operational Hotline

The primary means of 24-hour per day notification and communications between W3SES and the St. John the Baptist Parish emergency response organization is the W3SES Operational Hotline. This is a dedicated telephone system which allows St. John the Baptist Parish, the other W3P, LDEQ and GOHSEP to receive emergency notification messages from W3SES simultaneously.

Locations equipped with a W3SES Operational Hotline include, but are not limited to, the following:

- W3SES Control Room
- W3SES Technical Support Center (TSC)
- W3SES Emergency Operations Facility (EOF)
- W3SES Back Up EOF
- St. John the Baptist Parish EOC
- St. John the Baptist Parish E-911 Communications Center.
- St. Charles Parish
- St. Charles Parish 911 Center
- LDEQ/REP&R Office, Baton Rouge
- GOHSEP EOC, Baton Rouge

The dedicated telephone system which serves as the W3SES Operational Hotline may be replaced with an Internet based electronic notification system at any or all of these locations. The DEP will provide for 24-hour per day monitoring of the Waterford 3 Operational Hotline within the Parish.

2. Emergency Preparedness Radio System

The Emergency Preparedness Radio System serves as a backup communications system to the W3SES Operational Hotline. A receive-transmit console is available at the same locations listed above that are equipped with a W3SES Operational Hotline. DEP will provide 24-hour per day monitoring of the Emergency Preparedness Radio System within the Parish.

The Emergency Preparedness Radio System also serves as an alternate communications system to the commercial telephone for communicating with other W3P, LDEQ and GOHSEP.

3. Parish Radio Systems

Fixed, mobile and hand-held radios operating on various frequencies provide for communication between the Parish EOC and representatives from the following organizations (see also Figure F-1):

- Sheriff's Office
- Mutual Aid Industrial Plants

- Volunteer Fire Departments
- Hospitals
- Parish Public and Private Schools
- Emergency Medical Services
- State Police
- Parish Public Works and Public Utilities

4. Medical Support Facilities Communications Systems

A coordinated communications link for the Parish EOC, hospitals, and ambulances are provided by Emergency Medical Services and Fire/Rescue Communications Systems. These systems are comprised of either fixed/mobile radios or commercial telephones.

5. Commercial Telephone

Commercial telephone service is available at each emergency response facility. It can also be used as an alternate communication system. The Parish is primarily serviced by AT&T and Reserve Telecommunications (RTC) systems. Total breakdown is backed up by special lines outside the normal systems.

St. John the Baptist Parish has requested priority from AT&T and RTC for restoring service provided in the Parish EOC.

6. Paging System

Key emergency personnel in the emergency response organizations and supporting emergency personnel can be contacted through the paging system.

7. Alert Notification System

An Alert Notification System located throughout the 10-mile EPZ will be used to alert the public to listen to the radio station WWL-870 AM and WLMG-101.9 FM (the EAS radio stations). That portion of the system located within St. John the Baptist Parish will be activated from the Parish EOC. This system is maintained by Waterford 3. For more information, see the St. John the Baptist Parish Emergency Operations Plan Standard Operating Procedure: Emergency Operations Center [ESF #5 Emergency Management] – Attachment 4: Public Alert/Notification.

Special notification devices, such as automatic telephone dialing systems, are provided for special facilities including schools, hospitals, and major employers. Facilities with special notification devices are shown in Figure F-2. When activated, the DEP can provide information and instructions

over the system.

Mobile sirens and public address systems mounted on patrol cars, fire department and other emergency vehicles, and helicopters could provide backup to the Alert Notification System.

8. Testing

Periodic testing of emergency communications and the Alert Notification System is conducted on a regularly scheduled basis (approximately monthly) in accordance with established procedures. For more information see LPRRP, Basic Plan, Chapter 4, Section IV, and St. John the Baptist Parish Emergency Operations Plan Standard Operating Procedure: Emergency Operations Center [ESF #5 Emergency Management] – Attachments 2–Communications and 4- Public Alert/Notification.

FIGURE F-1

St. John The Baptist Parish Communications System

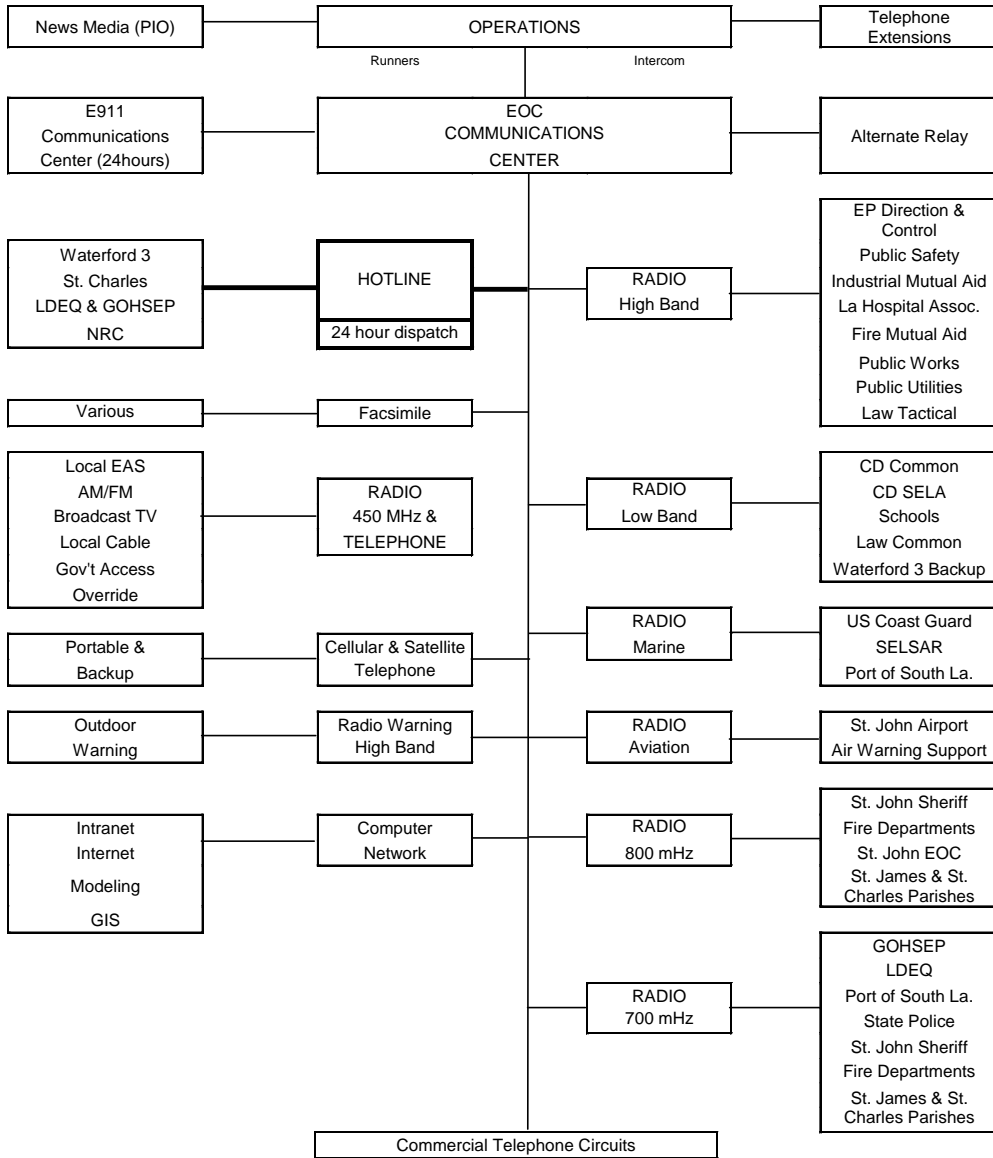


FIGURE F-2

Facilities with Special Notification Devices

Dupont – Pontchartrain Works
Marathon Petroleum Company
DPC Enterprises
Air Products
Nalco
Evonik/Stockhausen
ArcelorMittal
Pinnacle Polymers

Industrial Mutual Aid Radio System

Automatic telephone dialer includes day care centers, special facilities (nursing home, elderly high rise, etc.), private and parochial schools, which are not included on parish radio system and industries with high level background noise. Additionally, automatic telephone dialing devices include the parish's residential and commercial telephone database and this means may be used as a notification backup

Special facilities are listed in the St. John the Baptist Parish Emergency Operations Plan, Emergency Operations Center Standard Operating Procedure.

G. Protective Response for the Plume Exposure Pathway (10 Mile EPZ)

1. Waterford 3 Steam Electric Station (W3SES) will simultaneously notify the Parish and State agencies of protective action recommendations based on accident conditions.

LDEQ will provide an independent assessment and protective action recommendations to the LDEQ Secretary or designee, who will coordinate with GOHSEP on the efficacy of proposed recommendations.

2. The Parish will make a decision on the implementation of these recommendations based on local conditions.
3. St. John the Baptist Parish will coordinate operational elements for implementation of the protective response recommendation with GOHSEP as appropriate to the situation.
4. Predetermined protective actions may be taken when the projected dose at any place and time appears to be at or above those recommended in Protective Action Guides (PAGs).

The Parish and the 10-mile EPZ have been divided into Protective Action Sections (PAS) for designation of threatened areas and to denote where protective actions are to be taken. Tab A to Appendix B in Attachment 1 address the PAS in detail.

5. Protective Actions

Actions taken to protect the public may include any or all of the following:

- a. An advisory Monitor and Prepare
- b. Notification of affected residents and transients to seek immediate shelter,
- c. Evacuation of transients and residents within a designated Protective Action Section to reception centers or shelter areas outside the ten mile EPZ,
- d. Control of entrance into affected areas,
- e. Implementation of respiratory protective procedures: people within the risk area will be advised to cover their noses and mouths with handkerchiefs, cloth, or other protective materials, and to limit air intake from heating or cooling systems if they take in outside air.
- f. Implementation of procedures to prevent the consumption and distribution of contaminated food and water supplies,

g. Implementation of procedures to decontaminate persons when necessary,

6. Monitor and Prepare

If current conditions at the nuclear power plant do not warrant an evacuation, but there is a possibility that an evacuation or other protective action may be warranted later as the situation develops, the public in the affected sections will be advised to Monitor and Prepare, that is, to stay tuned to TV, radio and other media to keep informed of any future protective action decisions, and to prepare for the possibility of evacuation, Shelter in-place, or other protective actions.

7. Control of Entrance into Affected Areas

Under certain conditions, action will be taken to limit the number of people who enter an affected area. These conditions will be determined by the Parish President upon recommendations from LDEQ. The Parish Sheriff's Office will provide support to control access with assistance as requested from Louisiana State Police.

For more information, see the St. John the Baptist Emergency Operations Plan, Standard Operating Procedure, Law Enforcement & Traffic Control.

8. Sheltering (in-place)

The decision to recommend taking shelter indoors will be made by the Parish President through the advice of LDEQ. The notification to take shelter indoors will be issued via the Alert Notification System and the EAS.

9. Evacuation

a. Evacuation of the General Public

- i. Evacuation of any affected sections within St. John the Baptist Parish will be at the discretion and direction of the Parish President.
- ii. If a "State of Emergency" has been declared by the Governor, under the provisions of the Louisiana Homeland Security and Emergency Assistance and Disaster Act, the Governor would direct the evacuation jointly with the Parish President.
- iii. The basis for a decision to evacuate will be recommendations from Waterford 3 Steam Electric Station (W3SES) and LDEQ based on accident assessment and operational considerations at the time of emergency.
- iv. If the order to evacuate is given, evacuation will be by Protective Action Section. Citizens residing in a given section and ordered to

evacuate will be instructed to proceed according to predetermined evacuation routes. All evacuation routes will lead citizens toward a reception center. St. John the Baptist Parish EOC will consider alternate routes as needed.

- v. Evacuees from St. John the Baptist Parish will initially report to the designated reception centers for registration, monitoring and decontamination (as required). If necessary, evacuees will then be routed to temporary shelters. Figure G-1 shows the location of the reception centers and shelter areas.
- vi. Resources available to assist in evacuation of affected Parish areas are maintained in Parish Implementing Procedures or Resource Data Books.
- vii. The primary means of evacuating residents, transients, and industrial workers from the 10-mile EPZ will be by private automobiles. Announcements will be made via the EAS requesting that car-pooling arrangements be implemented to accommodate those without transportation, and multiple-car families will be encouraged to take only one car to minimize traffic congestion. Designated pickup points for persons without private transportation are outlined in the W-3 Emergency Reference Brochure distributed to public.

b. Traffic Control

- i. Strict traffic control measures will be utilized to:
 - 1) control ingress and egress of affected areas;
 - 2) maintain orderly flow of evacuated traffic;
 - 3) remove impediments on evacuation routes;
 - 4) assure access by ambulance and rescue vehicles;
 - 5) and assure area security.
- ii. Periodic patrols by law enforcement and/or other emergency personnel will canvass areas to:
 - 1) maintain order;
 - 2) assist disabled evacuees;
 - 3) confirm evacuation and remove remaining persons as required.
- iii. More details on traffic and access control, including the flow chart

which addresses the potential need to use alternate routes, can be found in the following procedures:

- 1) St. John the Baptist Emergency Operations Plan, Standard Operating Procedure, Law Enforcement & Traffic Control.
- 2) St. John the Baptist Emergency Operations Plan, Standard Operating Procedure, Public Works.
- 3) Waterford 3 SES Traffic and Control Points map and index.

c. Evacuation for Disabilities and Access/Functional Needs

Emergency Preparedness will maintain a current list of special-need evacuees. Emergency Preparedness will coordinate with all available transportation providers for the special-need transportation resources of these persons.

For more information, see the St. John the Baptist Emergency Operations Plan:

- Standard Operating Procedure, Health Services, and
- Standard Operating Procedure, Transportation Services.

d. Evacuation of Schools

Protective response measures will be implemented to minimize radiological exposure risks to school children. The entire parish is generally evacuated if evacuation is necessary during an emergency. If a decision to evacuate is made during school session, school children located within the 10-mile Emergency Planning Zone will be placed on school buses and transported outside the 10-mile Emergency Planning Zone to a designated Reception Center. Designated reception centers will register and perform monitoring and decontamination (as required). Children will remain under the supervision of school personnel until they are returned to their parents.

For more information, see the St. John the Baptist Emergency Operations Plan:

- Standard Operating Procedure, School Services, and
- Standard Operating Procedure, Transportation Services.

e. Evacuation of Medical Facilities

Protective response measures for Ochsner Medical Complex, Twin Oaks Nursing Home, and the Southeast Louisiana War Veterans Home must be

coordinated with the Parish EOC's Health/Medical Officer and the Louisiana Department of Health and Hospitals. Overall responsibility for appropriate actions rests with the Administrator of each facility.

Predesignated reception facilities are identified in facility emergency plans and Parish implementing procedures.

For more information, see the St. John the Baptist Emergency Operations Plan, Standard Operating Procedure, Health Services.

f. Evacuation of Incarceration Facilities

The Parish Prison is located in LaPlace, approximately 5.7 miles from Waterford 3. Sheltering, respiratory protection, or the use of radioprotective drugs may be recommended as an alternative to evacuation depending upon the circumstances surrounding the accident.

The St. John the Baptist Parish Sheriff is responsible for the protection of prisoners incarcerated in the Parish Prison. The Sheriff will implement those actions necessary for the protection of Parish Prison prisoners. If an evacuation is recommended but cannot be immediately accomplished, the use of radioprotective drugs will be considered. These substances will only be administered to prisoners with the concurrence of the Secretary of LDEQ, his Official Designee, or the State Health Officer.

If circumstances warrant, an evacuation of the Parish Prison will be accomplished using designated transportation resources. Agreements have been reached with the Sheriffs of neighboring Parishes and State Police for the transportation and confinement of prisoners during an evacuation.

For more information, see the St. John the Baptist Emergency Operations Plan:

- Standard Operating Procedure, Health Services
- Standard Operating Procedure, Law Enforcement & Traffic Control

g. Evacuation of Major Industry and Parks

Major industries and industrial parks which lie within the Parish portion of the 10-mile EPZ will be notified. No additional transportation is expected to be needed beyond vehicles already available at these locations at the time of an emergency.

For more information, see the St. John the Baptist Emergency Operations

Plan:

- Emergency Operations Center Standard Operating Procedure, Attachment 4, Public Alert/Notification

FIGURE G-1

St. John The Baptist Parish Reception Centers and Shelter Locations

RECEPTION CENTERS:

<u>Support Parish</u>	<u>Reception Centers</u>
Tangipahoa	Hammond High School 45168 River Road Hammond, LA
East Baton Rouge	Baton Rouge River Center 275 S River Road Baton Rouge, LA
Jefferson	Pontchartrain Center 4545 Williams Boulevard Kenner, LA
Jefferson	Alario Center 2000 Segnette Boulevard Westwego, LA
Lafourche	Central Lafourche High School 4820 Highway 1 Matthews, LA

SHELTERS:

St. Charles and St. John the Baptist Parishes, as the 10-mile EPZ risk parishes during an emergency at Waterford 3 Steam Electric Station, will direct evacuees to reception centers located outside the 10-mile EPZ in support parishes. These support parishes include Tangipahoa, Jefferson, Orleans, East Baton Rouge and Lafourche.

Shelter assignments in the support parishes will be made in conjunction with American Red Cross. Shelter capacities are maintained by American Red Cross representatives.

The support parish is responsible for managing its designated reception center, including staffing, arrangements for handling students at the center and provisions for the radiological monitoring of evacuees. Students are under the supervision of their respective school until a parent or designee can take over the supervision.

H. Public Health Support

1. Reception and Care

Following decontamination (if necessary) at the reception center, an initial registration of evacuees will be accomplished by the Louisiana Department of Children and Family Services. Health and medical care will be provided to evacuees as necessary. Evacuees will be directed to shelters made available through the American Red Cross.

A second, more detailed registration of evacuees will be accomplished at the shelters by the American Red Cross in conjunction with the Louisiana Department of Children and Family Services. Registration data will be tabulated and submitted to the Emergency Operations Center. Food, clothing, and health and medical care will be provided to the evacuees as needed. When the situation subsides, evacuees will be allowed to re-enter the affected area in accordance with procedures described in the General Plan.

2. Medical

Injured evacuees may be treated at the Ochsner Medical Complex. The primary hospital for medical support for contaminated injured persons will be provided by Ochsner Medical Center or West Jefferson Hospital. The secondary or backup hospital is Our Lady of the Lake Regional Medical Center.

I. Appendices

- Appendix II-1:** Responsibilities for Radiological Emergency Implementing Procedures.
- Appendix II-2:** List of St. John the Baptist Standard Operating Procedures.
- Appendix II-3:** St. John the Baptist Standard Operating Procedure NUREG-0654 Cross Reference.

APPENDIX I-1

Responsibilities for Radiological Emergency Implementing Procedures

Implementing Procedures have been prepared by functional areas. Staff responsibilities associated with functional areas is as follows. (Specific areas of responsibility/coordination appear in the appropriate Implementing Procedures.)

1. PUBLIC ALERT/NOTIFICATION
 - a. Parish President
 - b. Emergency Preparedness Director
 - c. Fire/Rescue Officer
 - d. School Services Officer
 - e. Health/Medical Officer
 - f. Law Enforcement and Traffic Control Officer
 - g. Public Information Officer
 - h. Warning Officer

2. PUBLIC WORKS
 - a. Emergency Preparedness Director
 - b. Public Works Officer
 - c. Law Enforcement Officer
 - d. Transportation Officer
 - e. Radiological Officer
 - f. Resource Officer

3. PUBLIC UTILITIES
 - a. Emergency Preparedness Director
 - b. Public Works Officer
 - c. Law Enforcement Officer
 - d. Transportation Officer
 - e. Radiological Officer
 - f. Resource Officer

4. RADIOLOGICAL EXPOSURE CONTROL
 - a. Parish President
 - b. Emergency Preparedness Director
 - c. Radiological Officer

5. SCHOOL SERVICES
 - a. Emergency Preparedness Director
 - b. School Services Officer
 - c. Transportation Officer

6. HEALTH AND MEDICAL SERVICES
 - a. Emergency Preparedness Director
 - b. Health/Medical Officer
 - c. Transportation Officer
 - d. Radiological Officer

7. TRANSPORTATION SERVICES
 - a. Emergency Preparedness Director
 - b. Transportation Officer
 - c. School Services Officer
 - d. Health/Medical Officer

8. PUBLIC INFORMATION
 - a. Parish President
 - b. Emergency Preparedness Director
 - c. Public Information Officer

9. FIRE AND RESCUE SERVICES
 - a. Emergency Preparedness Director
 - b. Fire/Rescue Officer
 - c. Radiological Officer

10. LAW ENFORCEMENT AND TRAFFIC CONTROL
 - a. Emergency Preparedness Director
 - b. Law Enforcement and Traffic Control Officer
 - c. Radiological Officer
 - d. Public Works Officer

11. Resources
 - a. Emergency Preparedness Director
 - b. Purchasing & Procurement
 - c. Public Works Officer
 - d. Public Utilities Officer
 - e. Health & Human Services

12. Damage Assessment
 - a. Emergency Preparedness Director
 - b. Damage Assessment Office
 - c. Law Enforcement and Traffic Control Officer
 - d. Fire/Rescue Officer
 - e. Public Works Officer
 - f. Public Utilities Officer

APPENDIX I-2

List of St. John the Baptist Standard Operating Procedures

<u>St. Charles Parish Radiological Emergency Implementing Procedures</u>
EMERGENCY OPERATIONS CENTER
EMERGENCY OPERATIONS CENTER - Attachment 1: Staff Notification
EMERGENCY OPERATIONS CENTER - Attachment 2: Communications
EMERGENCY OPERATIONS CENTER - Attachment 3: EOC Activation
EMERGENCY OPERATIONS CENTER - Attachment 4: Public Alert/Notification
EMERGENCY OPERATIONS CENTER - Attachment 5: Message Center
EMERGENCY OPERATIONS CENTER - Attachment 6: Security
EMERGENCY OPERATIONS CENTER - Attachment 7: Decision-Making
EMERGENCY OPERATIONS CENTER - Attachment 8: Operational Hotline
EMERGENCY OPERATIONS CENTER - Attachment 9: Logistics & Disaster Documentation
PUBLIC WORKS
PUBLIC UTILITIES
RADIOLOGICAL EXPOSURE CONTROL
SCHOOL SERVICES
HEALTH AND MEDICAL SERVICES
TRANSPORTATION SERVICES
PUBLIC INFORMATION
FIRE AND RESCUE SERVICES
LAW ENFORCEMENT AND TRAFFIC CONTROL
RESOURCES
DAMAGE ASSESSMENT

APPENDIX I-3

St. John the Baptist Standard Operating Procedure NUREG-0654 Cross Reference

Procedure	NUR EG	Section(s) Implemented
Emergency Operations Center	A.1.d	Enclosure II, Sections C and D
	A.2.a	Enclosures II, Sections A, B, D and Figure D-2
	D.4	Attachment 1, Section IV, Chapter 1; Enclosure II, Section D and E
	E.6	LPRRP, Chapter 4, Section IV; Enclosure II, Sections D.1.c.ii.12, F.7-8, Figure F-2 and F-2a and G
Emergency Operations Center Attachment 1: Staff Notification	A.4	Enclosures II, Section D.1 and E
	D.4	Attachment 1, Section IV, Chapter 1; Enclosure II, Section D and E
Emergency Operations Center Attachment 2: Communications	A.1.e	Enclosure II, Sections E, F.1 and F.2
	A.2.a	Enclosures II, Sections A, B, D and Figure D-2
	C.1.c	LPRRP, Basic Plan, Section VII.A.4; Attachment 1, Sections II.G, II.I and II.M; Appendix I Sections II.e, III.a.i and ii, and IV; Enclosures I-II, Section F
	D.4	Attachment 1, Section IV, Chapter 1; Enclosure II, Section D and E
	E.1	Attachment 1, Appendix A, Tab A and B, and Appendix I.III.b; Enclosure II, Section E
	E.2	LPRRP, Chapter 4, Section IV; Enclosure II, Sections E & F,
	F.1.e	Enclosure II, Sections E, F.2 - F.6
Emergency Operations Center Attachment 3: EOC Activation	A.4	Enclosure II, Section D.1 and E
	D.4	Attachment 1, Section IV, Chapter 1; Enclosure II, Section D and E
	H.3	Attachment 1, Section II, Enclosure II, Section C
	H.4	Attachment 1, Section II, Enclosure II, Section E
Emergency Operations Center Attachment 4: Public Alert/Notification	A.2.a	Enclosure II, Sections A, B, D and Figure D-2
	D.4	Attachment 1, Section IV, Chapter 1; Enclosure II, Section D and E
	E.5	Attachment 1, Section IV, Chapter 2.B.2 and Appendix H; Enclosure II, Sections E and F
	E.7	LPRRP, Chapters 4 and 5; Attachment 1, Section IV, Chapter 2, Tab A; Enclosure I, Section E.5
	J.10.c	Attachment 1, Appendix H; Enclosure II, Sections E.5 and F.7
Emergency Operations Center Attachment 5: Message Center	D.4	Attachment 1, Section IV, Chapter 1; Enclosure II, Section D and E

Emergency Operations Center Attachment 6: Security	D.4	Attachment 1, Section IV, Chapter 1; Enclosure II, Section D and E
	H.3	Attachment 1, Section II, Enclosure II, Section C
Emergency Operations Center Attachment 7: Decision-Making	A.2.a	Enclosure II, Sections A, B, D and Figure D-2
	D.4	Attachment 1, Section IV, Chapter 1; Enclosure II, Section D and E
	J.10.d	Enclosure II, Sections G and H
	J.10.g	Attachment 1, Section II.A.14; Enclosure II, Section G.8
Emergency Operations Center Attachment 8: Operational Hotline	J.10.i	Attachment 1, Appendix D and Appendix I.V.a; Enclosure II, Section D.1.g
	A.1.e	Enclosure II, Sections E, F.1 and F.2
Emergency Operations Center Attachment 9: Logistics & Disaster Documentation	E.1	Attachment 1, Appendix A, Tab A and B, and Appendix I.III.b; Enclosure II, Section E
Public Works	A.2.a	Enclosure II, Sections A, B, D and Figure D-2
	C.1.c	LPRRP, Basic Plan, Section VII.A.4; Attachment 1, Sections II.G, II.I and II.M; Appendix I Sections II.e, III.a.i and ii, and IV; Enclosure II, Section F
	D.4	Attachment 1, Section IV, Chapter 1; Enclosure II, Section D and E
	J.10.g	Attachment 1, Section II.A.14; Enclosure II, Section G.8
	J.10.i	Attachment 1, Appendix D and Appendix I.V.a; Enclosure II, Section D.1.g
	J.10.j	Enclosure II, Sections D.1.d & g, D.2.d.i, Figure D-1 and D-2, G.6 and G.8;
	J.10.k	Enclosure II, Section D.1.d&g, Section G.8
Public Utilities		
Radiological Exposure Control	A.2.a	Enclosure II, Sections A, B, D and Figure D-2
	D.4	Attachment 1, Section IV, Chapter 1; Enclosure II, Section D and E
	H.7	LPRRP, Chapter 6, Tab 3, Paragraph G and Table 1, Tab 4; Attachment 1, Section IV, Chapter 3.B.3
	J.10.e	LPRRP, Chapter 9, Tab 1; Attachment 1, Section IV, Chapter 5; Enclosure II, Section D.1.c
	J.12	LPRRP, Chapter 9, Section IV.B; Attachment 1, Section IV, Chapter 5.B.1.c and Tab A; Enclosure II, Sections G.8 and H.1
	K.3.a	LPRRP, Chapter 6, Tab 3, Table 1; Chapter 9, Sections III.A, V.B. and V.D; Attachment 1, Section IV, Chapter 5
	K.3.b	LPRRP, Chapter 7, Section V.D.5; Attachment 1, Section IV, Chapter 5

School Services	A.2.a	Enclosure II, Sections A, B, D and Figure D-2
	J.10.d	Enclosure II, Sections G and H
	D.4	Attachment 1, Section IV, Chapter 1; Enclosure II, Section D and E
	J.10.h	LPRRP, Chapter 7, IV.B.4.a.iii; Enclosure II, Sections D.1.c.i.9, D.1.f.iii, G.8 and Figure G-1
Health and Medical Services	A.2.a	Enclosure II, Sections A, B, D and Figure D-2
	J.10.d	Enclosure II, Sections G and H
	D.4	Attachment 1, Section IV, Chapter 1; Enclosure II, Section D and E
	J.10.g	Attachment 1, Section II.A.14; Enclosure II, Section G.8
Transportation Services	J.10.h	Attachment 1, Appendix H; Enclosure II, Sections D.1.c.i.9, G.8 and Figure G-1
	A.2.a	Enclosure II, Sections A, B, D and Figure D-2
	D.4	Attachment 1, Section IV, Chapter 1; Enclosure II, Section D and E
	J.10.d	Enclosure II, Sections G and H
	J.10.g	Attachment 1, Section II.A.14; Enclosure II, Section G.8
	J.10.k	Enclosure II, Section D.1.d&g, Section G.8
Public Information	A.2.a	Enclosure II, Sections A, B, D and Figure D-2
	D.4	Attachment 1, Section IV, Chapter 1; Enclosure II, Section D and E
	E.5	Attachment 1, Section IV, Chapter 2.B.2 and Appendix H; Enclosure II, Sections E and F
	G.4.a	Attachment 1, Section IV, Chapter 2.B.2.g-i, Appendix I.VI; Enclosure II, Section D.1.c.ii and F.2, 5-6
Fire and Rescue Services	G.4.c	LPRRP, Chapter 5, Section IV.B.4; Attachment 1, Section IV, Chapter 2.B.2.j-k
	A.2.a	Enclosure II, Sections A, B, D and Figure D-2
	D.4	Attachment 1, Section IV, Chapter 1; Enclosure II, Section D and E
Law Enforcement and Traffic Control	J.10.c	Attachment 1, Appendix H; Enclosure II, Section E.5 & F.7
	A.2.a	Enclosure II, Sections A, B, D and Figure D-2
	D.4	Attachment 1, Section IV, Chapter 1; Enclosure II, Section D and E
	J.2	Attachment 1, Section II.P and Appendix D; Enclosure II, Section G.8
	J.10.c	Attachment 1, Appendix H; Enclosure II, Section E.5 & F.7
	J.10.d	Enclosure II, Sections G and H
	J.10.g	Attachment 1, Section II.A.14; Enclosure II, Section G.8
	J.10.i	Attachment 1, Appendix D and Appendix I.V.a; Enclosure II, Section D.1.g
	J.10.j	Enclosure II, Sections D.1.d & g, D.2.d.i, Figure D-1 and D-2, G.6 and G.8;
J.10.k	Enclosure II, Section D.1.d&g, Section G.8	
Resources		
Damage Assessment		