

LPDES Program Update



**Louisiana Department of Environmental Quality
Office of Environmental Services
Water Permits Division**

April 2010



Water Permits Mission

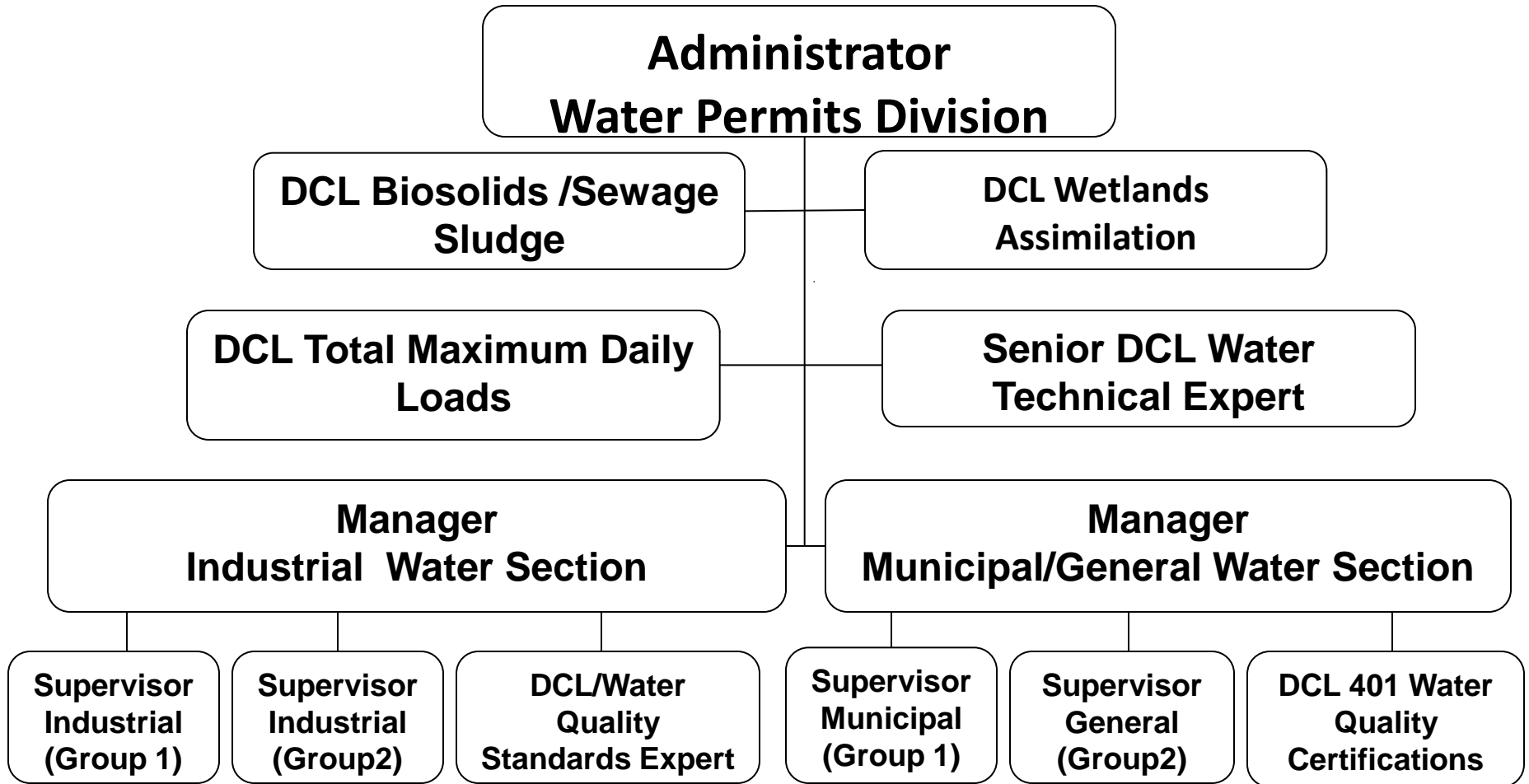
The Water Permits Division is responsible for the issuance of LPDES Water Permits, Biosolids Sewage/Sludge Permits and Hauler Registrations, and Issuance of Clean Water Act Section 401 Water Quality Certifications to Clean Water Act Section 404 permits administered by the Corps of Engineers. The Division is responsible for coordinating all other activities related to the State's LPDES Program for some 11,900 permits.



Water Permits Division's General Activities

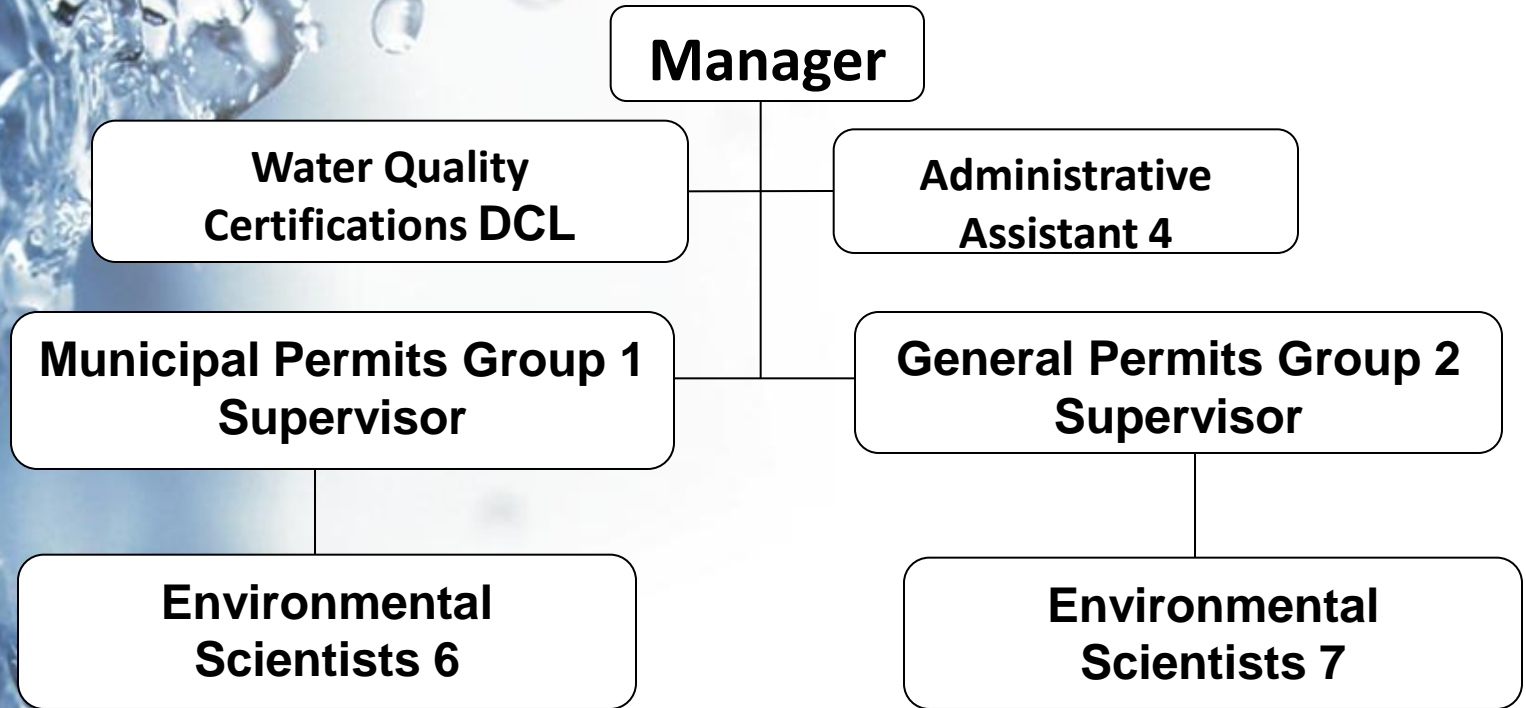
- Inactivate, renew and reissue Major, Minor, General and other Priority LPDES Water Permits and coordinate permit transfer
- Respond to comments and prepare for the permit hearings, appeals and requests for permit modification
- Publish LDEQ Water Permitting guidance for Pesticides, Antidegradation, 316(b), Green Technology and Wetland Projects
- Conduct workshops, publish newsletters, manage contracts and coordinate priority issues with EPA Region VI
- Coordinate Special Project WWTP, and the LDEQ Biosolids Program
- Submit Referrals to Small Business and Enforcement

Water Permits Division
Office of Environmental Services
Louisiana Department of Environmental Quality
March 8, 2010





Municipal & General Water Permits Section





General Permits, Pretreatment/Biomonitoring Group 1 - Jan Cedars

- Master General Permits
- Storm Water General Permits
- Non-Storm Water General Permits
- Asphalt Plants
- Auto/Truck Fleet, Rental
- Automobile Repair Shops
- Automobile Racetracks
- Car/truck Wash
- Concrete Plant/Concrete Products
- Equipment Rental, Repair and/or Sales
- Motor Vehicle Dealerships
- Municipal Separate Storm Sewer Sys (MS4)
- Potable Water Treatment Plants
- Railroad/Yard Terminal
- Sand & Gravel related materials
- Service Stations
- CAFOs
- Pretreatment
- Biomonitoring

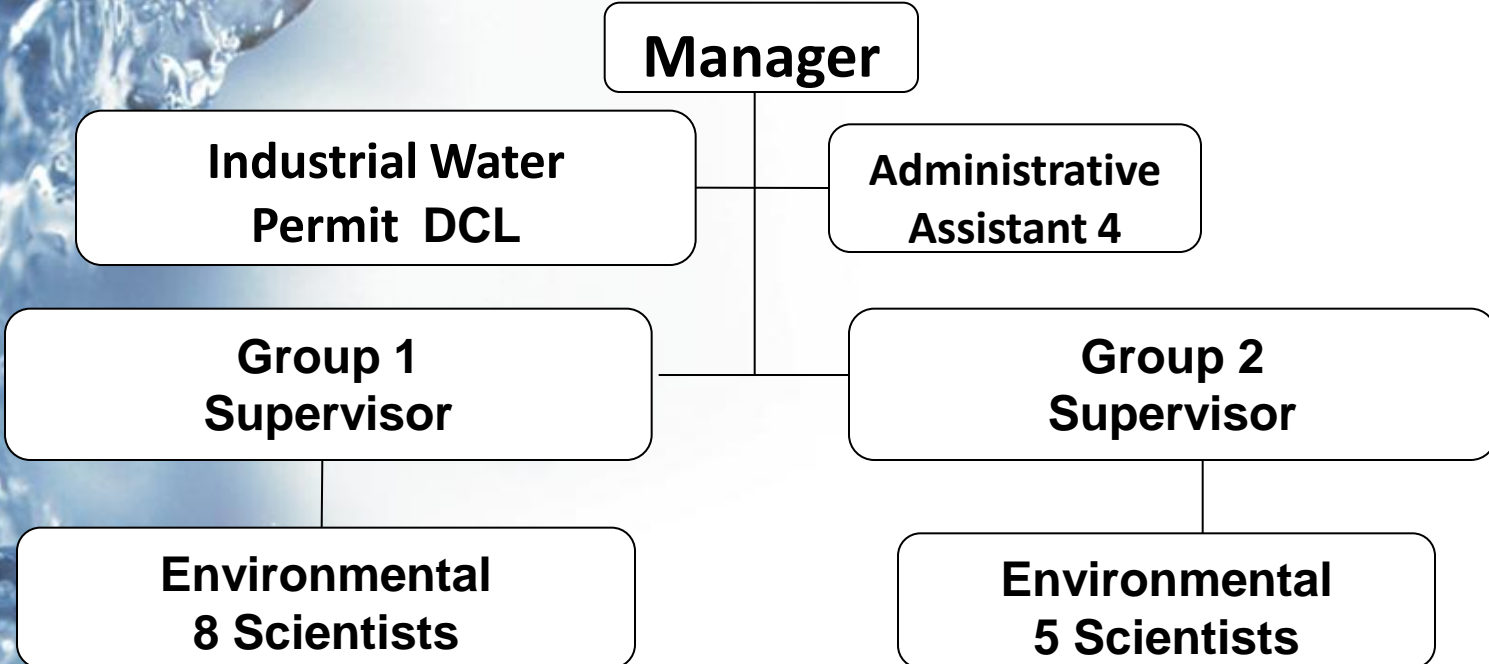


Municipal Permits, Sanitary, Landfills, Waste Treatment Facilities Group 2 – Todd Franklin

- Sewerage
- POTWs – Publicly Operated Treatment Works
- Private Sanitary Treatment Plants
- Sanitary General Permits Class I, II, III, and IV
- Landfills (Type I /II)
- Construction and Demolition Debris Landfills (Type III)
- Composting (Type III)
- Woodwaste Landfill (Type III)
- Processing Facility (Type III)
- Separation Facility (Type III)
- Waste Disposal (Non-hazardous, Hazardous, Oilfields)
- Centralized Waste Treatment Facilities
- Commercial Metal Reclaimers and Recyclers



Industrial Water Permits Section





Major and Minor Industrial Permits, & Oil & Gas Permits

Group 1 - Jenniffer Sheppard

- Ammunitions
- Military Bases
- Saw Mills
- Wood/Plywood Mills
- Wood Yard
- Fertilizers Manufacturing
- Inorganic Chemicals Manufacturing
- Organic Chemicals Manufacturing
- Industrial Gases
- Sugar Mill/Refinery
- Catalyst
- Ethanol Plant
- Herbicides/Pesticides Manufacturing
- Bulk Terminal/Storage
- Compressor Stations
- Crude Oil and Natural Gas
- Pipelines
- Gas Processing Plants
- Oil Refineries
- Oil & Gas Exploration, Production and Development
- Paper Mills
- Ship/Boat Building and Repairs
- Mining Operations



Minor and Major Industrial Permits

Group 2- Molly McKean

- Agricultural and Farm Services
- Air Transportation
- Animal Care & Research
- Alligator Farm Processors
- Animal (food) Processing and Preparation
- Concentrated Aquatic Animal Production (CAAP)
- Barge Cleaning
- Coke Calcining
- Compressed Gas Distributor
- Food Processing and Preparation
- Bulk Material
- Blending and Packaging
- Bulk Storage Terminal/Warehouse
- Fabricated Metal Products
- Fire Fighting Services
- Fish Hatchery
- Foundry
- Funeral Home/Crematory
- Grain Elevator
- Horticultural Farm/Plant Nursery
- Industrial Laundry
- Laboratory
- Medical Facility
- Miscellaneous Manufacturing
- Marine Cargo Handling and Stevedoring
- Oilfield Service Facilities
- Packaging Facility
- Truck Terminal
- Power Plants



Biosolids Permitting & Sewage and Sludge

**DCL-
Biosolids**

**1/4 ES (Permit Writer)
Municipal Permits**

**1/4 DCL
(TMDL Coordinator)**



Louisiana Sewage Sludge & Biosolids Use or Disposal Program

Regulations and Permitting Requirements

Found at: **LAC 33:IX.Subpart 3. Chapter 73**

Internet Site →

<http://www.deq.louisiana.gov/portal/tabid/2296/Default.aspx>



LOUISIANA DEPARTMENT OF **ENVIRONMENTAL QUALITY**
FOR ALL YOUR ENVIRONMENTS



Who Gets a Biosolids Permit

- All Publically Owned Treatment Works (POTW)
- Commercial, industrial, chemical facilities that treat sanitary wastewater separate from process wastewater
- Commercial preparers of sewage sludge & commercial land appliers of biosolids

What is Sewage and Sludge

- Generated during treatment of domestic sewage in a treatment works (not grit/bar screen residuals)
- Grease generated at and pumped from food service facility when grease is mixed with sewage sludge
- Pumped material from septic tanks, residential mechanical wastewater treatment plants and portable toilets

All Sewage Sludge & Biosolids Use or Disposal Options Require a Permit



Possess a "Sewage Sludge & Biosolids Use or Disposal" Permit



STATE OF LOUISIANA
DEPARTMENT OF ENVIRONMENTAL QUALITY
Office of Environmental Services – Water Permits Division
Post Office Box 4313
Baton Rouge, LA 70821-4313
PHONE#: (225) 219-3050

PERMIT APPLICATION
FOR
THE USE OR DISPOSAL OF SEWAGE SLUDGE (BIOSOLIDS)
IN
LOUISIANA

Application Forms

Form_7155_r04
Form_7257_r00 or
Form_7263_r00 or

Form_7155_r04
01/23/2009



LPDES Program Universe

11,900 Permits

- 234 Major Individual Permits
- 1245 Minor Individual Permits
- 7359 Non-Stormwater General
- 3062 Stormwater General

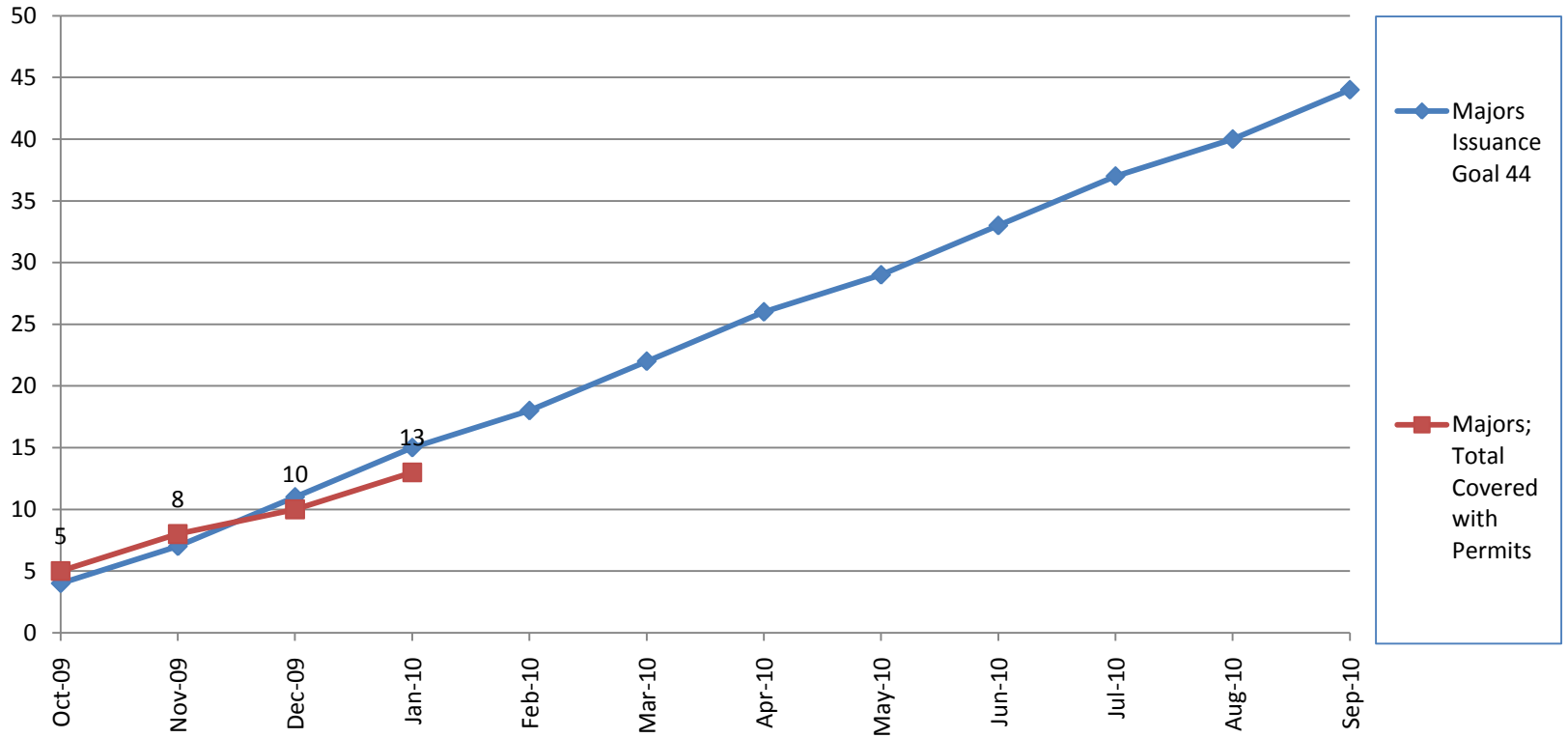
National Goal is to have 90% of permits current

LDEQ has committed to issuance of 44 major and 261 minor permits this federal fiscal year. (10/1/09 9/30/10)

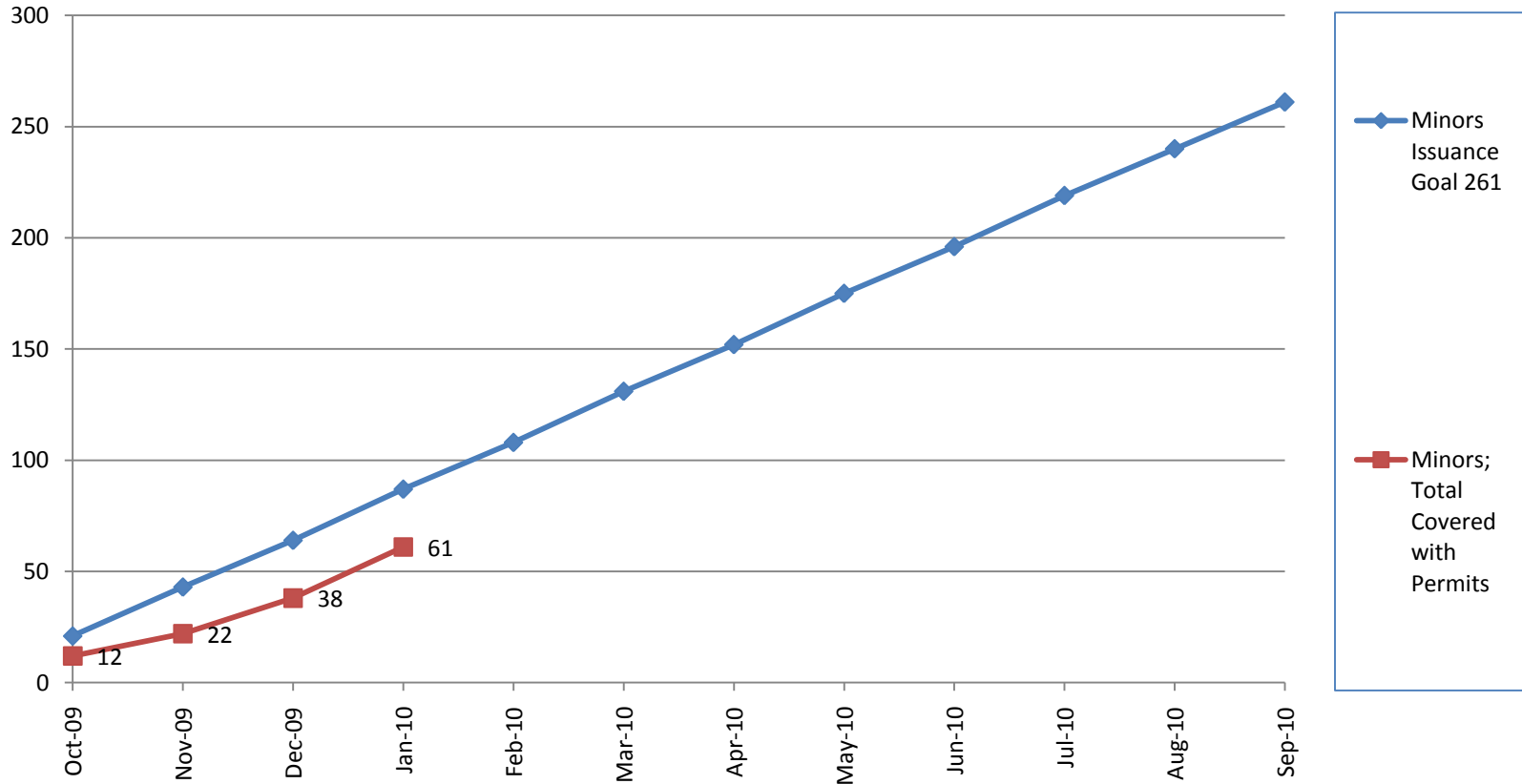
As of 2/01/10 18 majors and 109 minors have been issued.

LOUISIANA DEPARTMENT OF ENVIRONMENTAL QUALITY
FOR ALL YOUR ENVIRONMENTS

Major Permits Tracking January 2010



Minor Permits Tracking January 2010





Water Permits Division

KEY Issues

- ❖ **LPDES Pesticides General Permit**
- ❖ **Calcasieu Toxics TMDL**
- ❖ **TMDL Challenges vs. Urban Growth**
- ❖ **LDEQ's Antidegradation procedures**
- ❖ **Issuance of LDEQ Biosolids Permits**
- ❖ **EPA Reopened Phase II of 316(b) - Cooling Water Intake Structure (CWIS) Regulations**
- ❖ **Light Commercial Master General Permit (LAG480000 cover 428 Facilities)**
- ❖ **Online Applications for Oil and Gas Permits**



Water Permits Division What We Did Last Year

- ✓ **Assumed - Sewage Sludge Hauler Certification Program from DHH**
- ✓ **Issued 29 Sewage Sludge permits**
- ✓ **Issued 2 Sewage Sludge Master General Permits (MGP)**
- ✓ **Maintained General Permits Program – Reissued 11 MGPs**
- ✓ **Established Advanced MQL for LDEQ Water Permit Parameters**
- ✓ **Completed Expedited Permits w/in average of 112 days**
- ✓ **Commended by EPA Region VI for issuing more Priority Permits than any other state w/in the Region**
- ✓ **Cited by EPA for establishing and maintaining the largest General Permit Program in the Region VI**



Water Permits Division Goals

- Reduce printing/ mailing cost by 43% between January – October 2010**
- Finalize electronic application system**
- Streamline permitting operations**
- Finalize draft pesticide general permit**
- Developed “Uniform Compliance Review Strategy “**
- Expand Monthly Coordination Calls w/EPA R6**
- Continue Monthly State to State Coordination Calls**
- Reissue all permits in timely manner**



The Future of: Water Permits Division Office of Environmental Services LDEQ



Questions

Melvin C. "Mitch" Mitchell

mitch.mitchell@la.gov

LDEQ: Office of Environmental Services

Water Permits Division

PO Box 4313

Baton Rouge, LA 70821-4313

(225) 219-3181/3013

