

All information contained herein is provided solely for educational purposes. It is not intended as a substitute for professional or legal advice. Should you decide to act upon any information contained in this presentation, you do so at your own risk.

While the information posted has been verified to the best of our abilities, we cannot guarantee that there are no mistakes or errors.



LOUISIANA DEPARTMENT OF ENVIRONMENTAL QUALITY

**ENVIROSCCHOOL**

# Recycling Measurement at the State Level

Jodie Kimball

Louisiana Department of  
Environmental Quality



LOUISIANA DEPARTMENT OF ENVIRONMENTAL QUALITY

**ENVIROSCHOOL**

# Annual Recycling Report

- LDEQ is required by LA Rev Stat § 30:2413 to compile an annual report each year on resource recovery and recycling programs in the parishes and municipalities of the state
  - <https://law.justia.com/codes/louisiana/2011/rs/title30/rs30-2413/>
- LDEQ has a 25% waste reduction goal. We encourage solid waste reduction and recycling at all solid waste facilities in the state, and promote the recovery of recyclable materials (as identified in LAC 33:VII.10301, which can be found at
  - <https://www.deq.louisiana.gov/assets/docs/General/33v07-201602-Solid-Waste.pdf>
- Our annual recycling report is a collection of the parish and city reports we receive on a **voluntary** basis. This report is sent to the Legislature and is also available on the LDEQ website for the public to view.
  - (LAC 33:VII.1037:A. Each parish, in conjunction with its municipalities, shall submit to the department for its approval...)

# Annual Recycling Report

- Presently we are asking for the information by September 1, for the preceding year. An email reminder is send out by July.
- The Annual Recycling Report form can be found as a PDF and mailed in
  - <https://www.deq.louisiana.gov/page/recycling>,
- or the form can be completed online at:
  - <https://www.deq.louisiana.gov/recycling-report/register>

## Recycling

### RECYCLING

#### RECYCLING REPORTS

[2019 Recycling Annual Report to the Legislature](#)

[2018 Recycling Annual Report to the Legislature](#)

[2016 Recycling Annual Report to the Legislature](#)

[Recycling Resources by City and Parish](#)

[Drop-Off Programs for E-Recycling in Louisiana](#)

[Annual Recycling Report form - Online](#)

[Corporate Recycling Tax Credits PDF / Document](#)

Taxpaying entities who purchase qualified new recycling manufacturing or process equipment, and/or qualified service contracts, may be eligible for a tax credit of 14.4% against Louisiana income and corporation franchise taxes. The equipment must be new machinery or apparatus used exclusively to process post-consumer waste material, and/or recovered material, or new manufacturing machinery used exclusively to produce finished products from >50% post-consumer waste material in the state of Louisiana. Applicants must complete an Application for Income Tax Credit for Qualified New Recycling Equipment (see link). More information can be found in the DEQ Solid Waste regulations, LAC 33:VII.Chapter 104.

[Annual Recycling Report Form for Parishes and Municipalities PDF / Document](#)



**ANNUAL RECYCLING REPORT**  
**CALENDAR YEAR 2020**

**Instructions:**

1. Please complete all applicable sections and submit the completed form, typed or in ink, to the Department (Office of Environmental Services, Waste Permits Division, P.O. Box 4313, Baton Rouge, Louisiana 70821-4313) by **September 1, 2021**. Please keep a copy for your files.
2. If you have questions or need assistance in completing this form, please contact Jodie Kimball at 225.219.3045.
3. The Annual Parish Recycling Report is required under Louisiana Revised Statute 30:2413.B. Municipalities and other entities may submit their own report to the Department. Reports may be faxed to 225.219.3158.

**SECTION I: BACKGROUND INFORMATION**

PARISH/CITY \_\_\_\_\_ DEQ AGENCY INTEREST NUMBER \_\_\_\_\_

POPULATION (2020) \_\_\_\_\_

CONTACT \_\_\_\_\_ PHONE \_\_\_\_\_

TITLE \_\_\_\_\_

ADDRESS \_\_\_\_\_ E-MAIL \_\_\_\_\_

CITY \_\_\_\_\_ ZIP \_\_\_\_\_

**SECTION II: ANNUAL WASTE REDUCTION (DIVERSION FROM LANDFILLS)**

Only acceptable method used to calculate the percentage of waste reduction is as follows:

A. Percentage of Waste Reduction.

Total waste reduction<sup>1</sup> in tons: \_\_\_\_\_ = A

Total waste landfilled in tons<sup>2</sup>: \_\_\_\_\_ = B

Percentage of reduction \_\_\_\_\_

$$\text{Percentage of Reduction} = [A / (A+B)] \times 100$$

<sup>1</sup>Waste reduction being a waste management strategy that encourages the generation of less trash through practices of composting, reuse, recycling and resource recovery. Waste reduction total must be from at least three (3) recycling approaches being utilized, including but not limited to, waste tire recycling, composting, curbside recycling, buyback centers, drop-off centers. NOTE: Private recycling efforts should be included in parish totals.

<sup>2</sup>Must include all waste generated in parish that is landfilled, whether the landfill is in or out of parish. If weight is not available, 3.5 cubic yards of household waste = 1 ton.

**\*PLEASE REPORT ALL RESIDENTIAL + COMMERCIAL WASTE GENERATED IN YOUR PARISH / CITY THAT IS LANDFILLED, EVEN IF THE PARISH / CITY DOES NOT OFFER RECYCLING SERVICES. \***

B. Significant waste reduction accomplishments and/or lessons learned:

\_\_\_\_\_  
\_\_\_\_\_

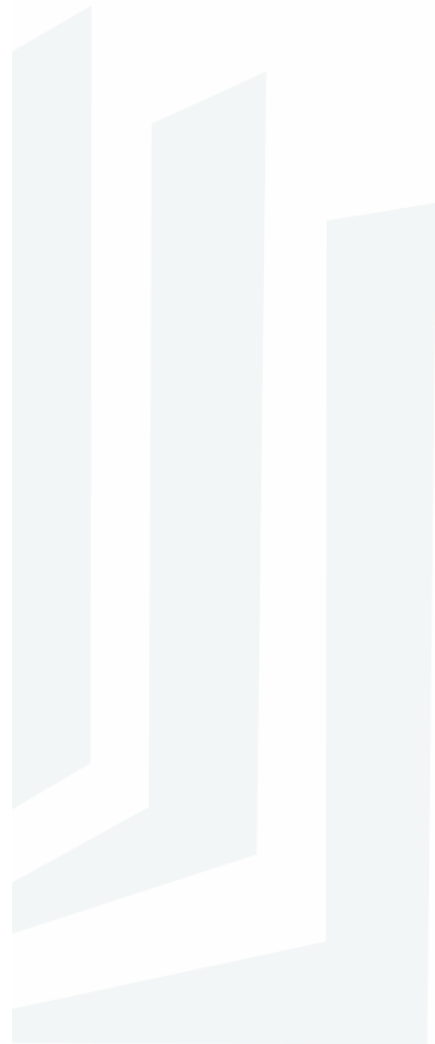
**SECTION III: PLAN REVIEW AND UPDATING**

A. Has a recycling plan been developed?     yes         no

B. Was the annual review of the recycling plan conducted by the governing body?     yes         no

C. What municipalities are included in the plan's service area?

\_\_\_\_\_



LOUISIANA DEPARTMENT OF ENVIRONMENTAL QUALITY  
**ENVIROSCHOOL**

Only acceptable method used to calculate the percentage of waste reduction is as follows:

A. Percentage of Waste Reduction.

Total waste reduction<sup>1</sup> in tons: 20,161.11 = A

Total waste landfilled in tons<sup>2</sup>: 95,653.10 = B

Percentage of reduction : 17

$$\text{Percentage of Reduction} = (A / (A+B)) \times 100$$

<sup>1</sup>Waste reduction being a waste management strategy that encourages the generation of less trash through practices of composting, reuse, recycling and resource recovery. Waste reduction total must be from at least three (3) recycling approaches being utilized, including but not limited to, waste tire recycling, composting, curbside recycling, buyback centers, drop-off centers. NOTE: Private recycling efforts should be included in parish totals.

<sup>2</sup>Must include all waste generated in parish that is landfilled, whether the landfill is in or out of parish. If weight is not available, 3.5 cubic yards of household waste = 1 ton.

\*PLEASE REPORT ALL RESIDENTIAL + COMMERCIAL WASTE GENERATED IN YOUR PARISH / CITY THAT IS LANDFILLED, EVEN IF THE PARISH / CITY DOES NOT OFFER RECYCLING SERVICES.\*

B. Significant waste reduction accomplishments and/or lessons learned:

compost and wood waste processing yield high  
volume reduction

SECTION III: PLAN REVIEW AND UPDATING

A. Has a recycling plan been developed?  yes  no

B. Was the annual review of the recycling plan conducted by the governing body?  yes  no

C. What municipalities are included in the plan's service area?

All



## SECTION II: ANNUAL WASTE REDUCTION (DIVERSION FROM LANDFILLS)

Only acceptable method used to calculate the percentage of waste reduction is as follows:

A. Percentage of Waste Reduction:

Total waste reduction<sup>1</sup> in tons: \_\_\_\_\_ = A

Total waste landfilled in tons<sup>2</sup>: \_\_\_\_\_ = B

Percentage of reduction: \_\_\_\_\_

$$\text{Percentage of Reduction} = \frac{A}{(A+B)} \times 100$$

<sup>1</sup>Waste reduction being a waste management strategy that encourages the generation of less trash through practices of composting, reuse, recycling and resource recovery. Waste reduction total must be from at least three (3) recycling approaches being utilized, including but not limited to, waste tire recycling, composting, curbside recycling, buyback centers, drop-off centers. NOTE: Private recycling efforts should be included in parish totals.

<sup>2</sup>Must include all waste generated in parish that is landfilled, whether the landfill is in or out of parish. If weight is not available, 3.5 cubic yards of household waste = 1 ton.

**\*PLEASE REPORT ALL RESIDENTIAL + COMMERCIAL WASTE GENERATED IN YOUR PARISH / CITY THAT IS LANDFILLED, EVEN IF THE PARISH / CITY DOES NOT OFFER RECYCLING SERVICES.\***

B. Significant waste reduction accomplishments and/or lessons learned:

---

---

## SECTION III: PLAN REVIEW AND UPDATING

A. Has a recycling plan been developed?  yes  no

B. Was the annual review of the recycling plan conducted by the governing body?  yes  no

C. What municipalities are included in the plan's service area?

n/a

---



#### SECTION IV: COLLECTION SERVICE(S) PROVIDED (PARISH OR MUNICIPAL)

Please indicate what type of collection service is provided for recyclable materials. Check all that apply.

Curbside recycling collection. List the service area(s) receiving this service Mix containers at all schools and corrugated containers at 100 +/- private businesses.

Check the type of recyclable material collected  plastics  glass  paper  newsprint  metal cans  aluminum  
 other (please list) \_\_\_\_\_

Drop-off recycling collection site(s). List all parish or municipal collection sites

Opelousas, Eunice, Landfill, all schools

Check the type of recyclable material collected  plastic  glass  paper  newsprint  cans  aluminum foil  used oil  tires  yard waste  batteries  e-waste  white goods (appliances)  metal  woodwaste  furniture  food waste  other (please list)



LOUISIANA DEPARTMENT OF ENVIRONMENTAL QUALITY

**ENVIROSCHOOL**



#### SECTION IV: COLLECTION SERVICE(S) PROVIDED (PARISH OR MUNICIPAL)

Please indicate what type of collection service is provided for recyclable materials. Check all that apply.

**Curbside recycling collection.** List the service area(s) receiving this service \_\_\_\_\_

Check the type of recyclable material collected  plastics  glass  paper  newsprint  metal cans  aluminum  
 other (please list) \_\_\_\_\_

**Drop-off recycling collection site(s).** List all parish or municipal collection sites

Check the type of recyclable material collected  plastic  glass  paper  newsprint  cans  aluminum foil  used  
oil  tires  yard waste  batteries  e-waste  white goods (appliances)  metal  ~~woodwaste~~  furniture   
food waste  other (please list)

List recycling contractors currently being used for parish or municipal recycling services in the year 2020, and location of destination recycling center.

List landfill(s) used where household waste from your jurisdiction was disposed in the year 2020.

**Household hazardous waste (HHW) event(s).** When are these events held?

Jan  Feb  Mar  Apr  May  Jun  Jul  Aug  Sept  Oct  Nov  Dec  Year-round



**SECTION V. WEIGHTS AND COLLECTION SYSTEM**

Please list materials diverted for recycling in tons (except where noted). Please mark an "X" in the boxes for the services offered. Services may include both public and private recycling, including non-profits.

**CURRENT (2020) COLLECTION SYSTEM**

RECYCLING	WEIGHT IN TONS FROM RESIDENTIAL + COMMERCIAL SOURCES <sup>1</sup>	CURBSIDE	DROP-OFF <sup>2</sup>	BUY BACK
ALUMINUM				
APPLIANCES (WHITE GOODS)				
LEAD ACID BATTERIES				
CARDBOARD				
COOKING OIL / GREASE (tons) (divide gallons by 266.7 to get tons)				
HOUSEHOLD HAZARDOUS WASTE				
GLASS				
MAGAZINES & CATALOGS				
FERROUS METAL (IRON, STEEL)				
NEWSPRINT				
NON-FERROUS METALS <sup>4</sup>				
PLASTIC:				
#1 PET				
#2 HDPE				
#1 AND #2 COMMINGLED PLASTIC				
TIRES – AUTO (tons) (divide number of tires by 69 to get tons)				
TIRES – TRUCK <sup>3</sup> (tons) (divide number of tires by 20 to get tons)				
USED MOTOR OIL (tons) (divide gallons by 270.3 to get tons)				
ANTIFREEZE (tons) (divide gallons by 238.1 to get tons)				
WHITE PAPER				
COMMINGLED RECYCLABLES				
FLUORESCENT BULBS				
ELECTRONIC WASTE (E-WASTE)				
OTHER (EXPLAIN IN DETAIL)				
<b>TOTAL RECYCLING IN TONS</b>				
<b>COMPOSTING<sup>3</sup></b>				
WOODWASTE, YARD WASTE				
FOOD SCRAPS				
<b>TOTAL COMPOSTING IN TONS</b>				
<b>WASTE-TO-ENERGY<sup>6</sup></b>				
WOOD CHIPS				
TIRE CHIPS				
<b>TOTAL WASTE-TO-ENERGY IN TONS</b>				
<b>TOTAL RECYCLING + COMPOSTING + WASTE-TO-ENERGY IN TONS (transfer total to page 1 as "A")</b>				

<sup>1</sup>Materials from commercial sources may be reported separately if known.

**SECTION V. WEIGHTS AND COLLECTION SYSTEM**

Please list materials diverted for recycling in tons (except where noted). Please mark an "X" in the boxes for the services offered. Services may include both public and private recycling, including non-profits.

**CURRENT (2020) COLLECTION SYSTEM**

RECYCLING	WEIGHT IN TONS FROM RESIDENTIAL + COMMERCIAL SOURCES <sup>1</sup>	CURBSIDE	DROP-OFF <sup>2</sup>	BUY BACK
ALUMINUM	40.43	X	X	X
APPLIANCES (WHITE GOODS)	314.73		X	
LEAD ACID BATTERIES	2.56		X	
CARDBOARD	749.72	X	X	X
COOKING OIL / GREASE (tons) (divide gallons by 266.7 to get tons)				
HOUSEHOLD HAZARDOUS WASTE	6.54		X	
GLASS				
MAGAZINES & CATALOGS				
FERROUS METAL (IRON, STEEL)	320.18	X	X	X
NEWSPRINT	183.17	X	X	X
NON-FERROUS METALS <sup>4</sup>				
PLASTIC: MIX	26.66	X	X	X
#1 PET				
#2 HDPE				
#1 AND #2 COMMINGLED PLASTIC				
TIRES – AUTO (tons) (divide number of tires by 69 to get tons)	130.96		X	
TIRES – TRUCK <sup>3</sup> (tons) (divide number of tires by 20 to get tons)				
USED MOTOR OIL (tons) (divide gallons by 270.3 to get tons)	3.74		X	
ANTIFREEZE (tons) (divide gallons by 238.1 to get tons)				
WHITE PAPER	25.73	X	X	X
COMMINGLED RECYCLABLES				
FLUORESCENT BULBS				
ELECTRONIC WASTE (E-WASTE)	3.72		X	
OTHER (EXPLAIN IN DETAIL)				
<b>TOTAL RECYCLING IN TONS</b>	<b>1,808.14</b>			
<b>COMPOSTING<sup>3</sup></b>				
WOODWASTE, YARD WASTE	17,621.44		X	
FOOD SCRAPS	731.53		X	
<b>TOTAL COMPOSTING IN TONS</b>	<b>18,352.97</b>			
<b>WASTE-TO-ENERGY<sup>6</sup></b>				
WOOD CHIPS				
TIRE CHIPS				
<b>TOTAL WASTE-TO-ENERGY IN TONS</b>				
<b>TOTAL RECYCLING + COMPOSTING + WASTE-TO-ENERGY IN TONS (transfer total to page 1 as "A")</b>	<b>20,161.11</b>			



LOUISIANA DEPARTMENT OF ENVIRONMENTAL QUALITY  
**ENVIROSCHOOL**



# Highlights of 2019 Report

- 28 entities reported for 2019, representing 57% of Louisiana population
  - Only 47% of population represented in 2018 report
- Reported annual waste reduction ranged from 0% to 37%
- 16 parishes reported no recycling activities
- The 2019 report overall recycling rate for the state: 5%
  - The decrease from the 12.87% rate reported in 2018 is believed to be due to many curbside recycling programs being cancelled as a result of China's "National Sword" policy enacted in January 2018, banning the import of most plastic and paper in addition to tightening its restrictions on accepting other materials. Within the following year, this policy resulted in a drop in China's plastics imports by 99%. The effects of this ban can be seen locally through parishes such as Ascension no longer offering recycling services, facilities in Metairie no longer accepting residential recyclables, drop-off sites in Sulphur and St. Charles Parish closing, and scale backs that have occurred in Jefferson Parish, New Orleans, and Gretna.



# Annual Recycling Report

**Report to the Natural Resources and Environment Committee**

**and**

**the Senate Committee on Environmental Quality**

**Summary of 2019 Annual Recycling Reports**

**As Presented by the Louisiana Department of Environmental Quality**

L.R.S. 30:2413 requires that the Louisiana Department of Environmental Quality report to the House Committee on Environment and to the Senate Committee on Environmental Quality data on resources and recycling programs operated by parishes and municipalities within the State of Louisiana.

On or about July 6, 2020, the Louisiana Department of Environmental Quality, Office of Environmental Services, requested of all parish solid waste planners their annual recycling reports for the year 2019. As a result of that request and other contacts, the following summary has been developed.

Solid waste typically generated by households, businesses, government facilities, and schools is managed by parish and municipal governments, and in many cases by private entities. The parish and municipal governments are requested to submit Annual Recycling Reports.

The following is a summary of the 2019 Annual Recycling Reports submitted:

- 28 entities have tendered reports of their activities, 16 of which reported no recycling activities in their jurisdiction.
- 2,649,307 residents are represented by the reports, or approximately 57% of the state's population.

The state's overall reported recycling rate for the year 2019 was 5%. This was an apparent decrease from the 12.87% rate reported in 2018. This is believed to be due to many curbside recycling programs being cancelled as a result of China's "National Sword" policy enacted in January 2018, banning the import of most plastic and paper in addition to tightening its restrictions on accepting other materials. Within the following year, this policy resulted in a drop in China's plastics imports by 99%. The effects of this ban can be seen locally through parishes such as Ascension no longer offering recycling services, facilities in Metairie no longer accepting residential recyclables, drop-off sites in Sulphur and St. Charles Parish closing, and scale backs that have occurred in Jefferson Parish, New Orleans, and Gretna.



LOUISIANA DEPARTMENT OF ENVIRONMENTAL QUALITY

**ENVIROSCHOOL**

# Annual Recycling Report

Reported annual waste reduction ranged from 0% to 37%.  
6 entities offered curbside recycling collection services.  
19 entities provided drop-off recycling collection sites.  
13 entities had household hazardous waste collection events.

To view the detailed reports submitted by all parishes and municipalities, you may access the Louisiana Department of Environmental Quality's Electronic Document Management System at the following link:

<https://edms.deq.louisiana.gov/app/doc/view.aspx?doc=12434816&ob=yes&child=yes>

## 2019 LOUISIANA RECYCLING SUMMARY



RECYCLING ACTIVITY <sup>1</sup>	NUMBER OF ENTITIES REPORTING ACTIVITY	TONS RECYCLED
ALUMINUM	7	1352
APPLIANCES (WHITE GOODS)	12	5930
BATTERIES (LEAD ACID)	6	134
BATTERIES (OTHER)	6	1198
CARDBOARD	8	8191
COMPOSTING from FOOD SCRAPS, WOODWASTE & YARD WASTE <sup>2</sup>	7	49614
COOKING OIL / GREASE	3	16
ELECTRONIC WASTE (E-WASTE)	9	137
FERROUS METAL (IRON, STEEL)	12	14558
GLASS	2	2873
HOUSEHOLD HAZARDOUS WASTE	7	235
MAGAZINES & CATALOGS	1	100
MIXED PAPER	0	0
NEWSPRINT	3	3175
NON-FERROUS METALS <sup>3</sup>	6	1416
PLASTIC		
#1 PET	2	533
#2 HDPE	3	560
MIXED #1 AND #2 PLASTIC	3	151
TIRES	18	2679
USED OIL	16	735
WASTE-TO-ENERGY <sup>4</sup>	2	4590
WHITE PAPER	5	86
OTHER	8	6505
COMMINGLED RECYCLABLES	8	26248
TOTAL RECYCLING + COMPOSTING + WASTE-TO-ENERGY REPORTED	28	131016
TOTAL LANDFILLING REPORTED	28	2862340
<b>OVERALL RECYCLING RATE</b>		<b>5%</b>



<sup>1</sup>May include all public & privately operated drop-off centers.

<sup>2</sup>Woody waste turned into mulch, does not include C&D waste or combustion.

<sup>3</sup>Includes mixed metals, mercury from fluorescent bulbs.

<sup>4</sup>Includes combustion of wood chips and tire chips with recovery of useful energy.

# Issues With Parish Reports

- Consistency of Participation
  - 28 entities reported for 2019, but currently only 19 have reported for 2020
- Completeness of Reports
  - Parishes with no recycling did not provide any data (e.g., tons landfilled)
  - Many parishes/cities provided only totals with no, or inadequate, breakdown of materials recycled (recyclers will not provide breakdown unless contract requires)
  - Recycling plans may be created but not updated. In 2019, out of the 28 entities that reported only 12 reported having a recycling plan, and 8 reported to have never updated.



# Challenges for the State Report

- Get all parishes to report landfilled waste for an accurate basis
- Adequate resources within LDEQ to work one-on-one with parish & local recycling coordinators to maintain and improve reporting
- Education of acceptable materials:
  - Public education as to what can be recycled and how to discard. This is important so that upon separation at the recycling facility they are recycled and not returned to the landfill (example: metal cans, plastic containers and glass should be empty and rinsed)

# Recycling: Is it Effective?

- The U.S. Environmental Protection Agency (EPA) estimates the recycling rate has increased from less than 7% in 1960 to **just over 35% in 2017**. Some materials, namely paper and aluminum, are recycled at relatively high levels, while others, like plastic, lag behind
- When is recycling not effective?
  - When recyclables become contaminated when items are placed in the wrong bin, or when a dirty food container gets into the recycling bin.
  - Contamination can prevent large batches of material from being recycled.
- **What goes in the bin?**
- Recycling resources and recyclers can be found on LDEQ's website:
  - <https://www.deg.louisiana.gov/index.cfm/page/AF8B39A4-B431-C713-0FDA24AB099554BA>
- Baton Rouge's Recycling office has a handout that is a good example of how we can help ensure our recyclables are actually recycled:
  - <https://www.brla.gov/890/Recycling-Office>.





# ACCEPTED MATERIALS

## THANK YOU FOR RECYCLING THESE:



### PAPER & CARDBOARD

Cardboard, Magazines, Junk Mail, Newspaper, Office Paper



### METAL CANS

Aluminum, Tin and Steel Cans, Foil, Pie Tins



### PLASTIC CONTAINERS

Kitchen, Laundry, Bath: Bottles and Containers (Caps Attached)



### GLASS

Glass Jars and Bottles (Caps Removed)



## NOT ACCEPTED IN RECYCLING CART



**DO NOT**  
Bag  
Recyclables  
(Leave It  
Loose)



**NO**  
Plastic Bags  
or Plastic  
Wrap (Return  
To Retailer)



**NO**  
Clothing or  
Linens (Use  
Donation  
Programs)



**NO**  
Tanglers  
(Hoses,  
Wires,  
Chains)



**NO**  
Large Items  
(Metal, Plastic,  
Wood, Glass)

**WHEN IN DOUBT, FIND OUT!**  
[brla.gov/recycle](http://brla.gov/recycle) (225) 389-5194

**DES**  
DEPT. OF ENVIRONMENTAL SERVICES



LOUISIANA DEPARTMENT OF ENVIRONMENTAL QUALITY  
**ENVIROSCHOOL**

# FUN FACTS

- A single recycled plastic bottle saves enough energy to run a 100-watt bulb for 4 hours.
- Recycling plastic saves *twice* as much energy as it takes to burn it.
- It only takes 5 recycled plastic bottles to make enough fiberfill to stuff a ski jacket.
- Motor oil never wears out, it just gets dirty – [and it can be recycled.](#)
- It takes 500 years for average sized plastic water bottles to fully decompose.
- The amount of plastic film and wrap produced annually could shrink-wrap the state of Texas.

Americans use 65 billion aluminum soda cans each year.

- In only three months, enough aluminum cans are thrown out in the United States to rebuild all of our commercial air fleets.
- Aluminum cans make up less than 1% of waste in the United States because they are the #1 recycled item.
- There is no limit to the number of times you can recycle an aluminum can.
- Recycling just two aluminum cans save the same amount of energy it takes to power a PC for a single workday.
- You can make 20 new cans from recycled material using the same amount of energy that it takes to make 1 brand new can.

# Speaker Contact Information

## Thanks for Participating!

Jodie Kimball

Waste Permits Division

Louisiana Department of Environmental  
Quality

(225) 219-3045

[jodie.kimball@la.gov](mailto:jodie.kimball@la.gov)

# Waste Tires in Louisiana

Dutch Donlon

Waste Permits Division

Louisiana Department of Environmental Quality



LOUISIANA DEPARTMENT OF ENVIRONMENTAL QUALITY

**ENVIROSCCHOOL**

# WASTE TIRES IN LOUISIANA

PROGRAM MISSION  
STATUTES  
REGULATIONS  
PROGRAM SUMMARY  
PROGRAM ELEMENTS  
PROGRAM PROCESS

# WASTE TIRE PROGRAM MISSION

Prevent unauthorized/promiscuous disposal of waste tires by implementing regulations to manage/track waste tires from point of generation, through transport of waste tires to permitted processor, to end use project or disposal.



# WASTE TIRE STATUTES

L.R.S. Subtitle II of Title  
30:2418.

Prohibitions  
LDEQ mandates

# WASTE TIRE STATUTES

## Prohibitions

Unlawful for a person to dispose of waste tires in Louisiana, unless at a permitted solid waste facility, permitted waste tire processing facility, or waste tire collection center.

# WASTE TIRE STATUTES

## Mandates

- Waste Tire Management Fund (Fund) established in the state treasury.
- Monies of the fund administered by the LDEQ secretary.
- Statutes also establish fees on tire sales.
- Processors' subsidies paid from the Fund.

# WASTE TIRE REGULATIONS

E.R.C. Title 33:VII.Solid Waste. Subpart 2.  
Recycling. Chapter 105.

Chapter 105 contains regulations pertaining  
to waste tires and waste tire recycling

# WASTE TIRE PROGRAM REGULATORY SUMMARY

- Definitions (Title 33:VII.10505)
- Permitting system (Title 33:VII.10511)
- End use projects (Title 33:VII.10515)
- End-Market Uses (Title 33:VII.10532)
- High Volume End Use (Title 33:VII.10514)
- Manifest system (Title 33:VII.10534)
- Fees (Title 33:VII.10535)

# IMPORTANT DEFINITIONS

## (Title 33:VII.10505)

- **Tire** (passenger/Light Truck/Small Farm Service Tire, Medium Truck Tire, Off-Road Tire, Exempt Tire is not defined)
  - Used Tire
  - Waste Tire
- Program eligible/ineligible tire
  - Waste Tire Material (WTM)
  - Processing

# IMPORTANT DEFINITIONS (Title 33:VII.10505)

- Manifest
- Generator
- Transporter
- Processor
- et al

# WASTE TIRE MATERIAL



Scale  
~ 1 foot

---



LOUISIANA DEPARTMENT OF ENVIRONMENTAL QUALITY  
**ENVIROSCHOOL**



# WASTE TIRE PROGRAM ELEMENTS

- Permitting system (processors and collection centers)
- Licensing (generators), Authorization Certificate (transporters)
- Project specifications/reimbursements (processors)
- Waste tire cleanup provisions
- Fees and tracking all program elements

# LDEQ WASTE TIRE PROGRAM

- Permitting (Waste Permits Division)
- Licensing (Waste Permits Division)
- Remittance of fees from generators (Fiscal Division)
- Processor reimbursements (Waste Permits Division/Fiscal Division)
- Inspections (Surveillance Division)
- Enforcement (Enforcement Division)
- Audit Services Section (Office of the Secretary)

# TIRE TYPES

## Defined in regulations

- Tire
- Used tire
- Waste tire

## Not defined in regulations

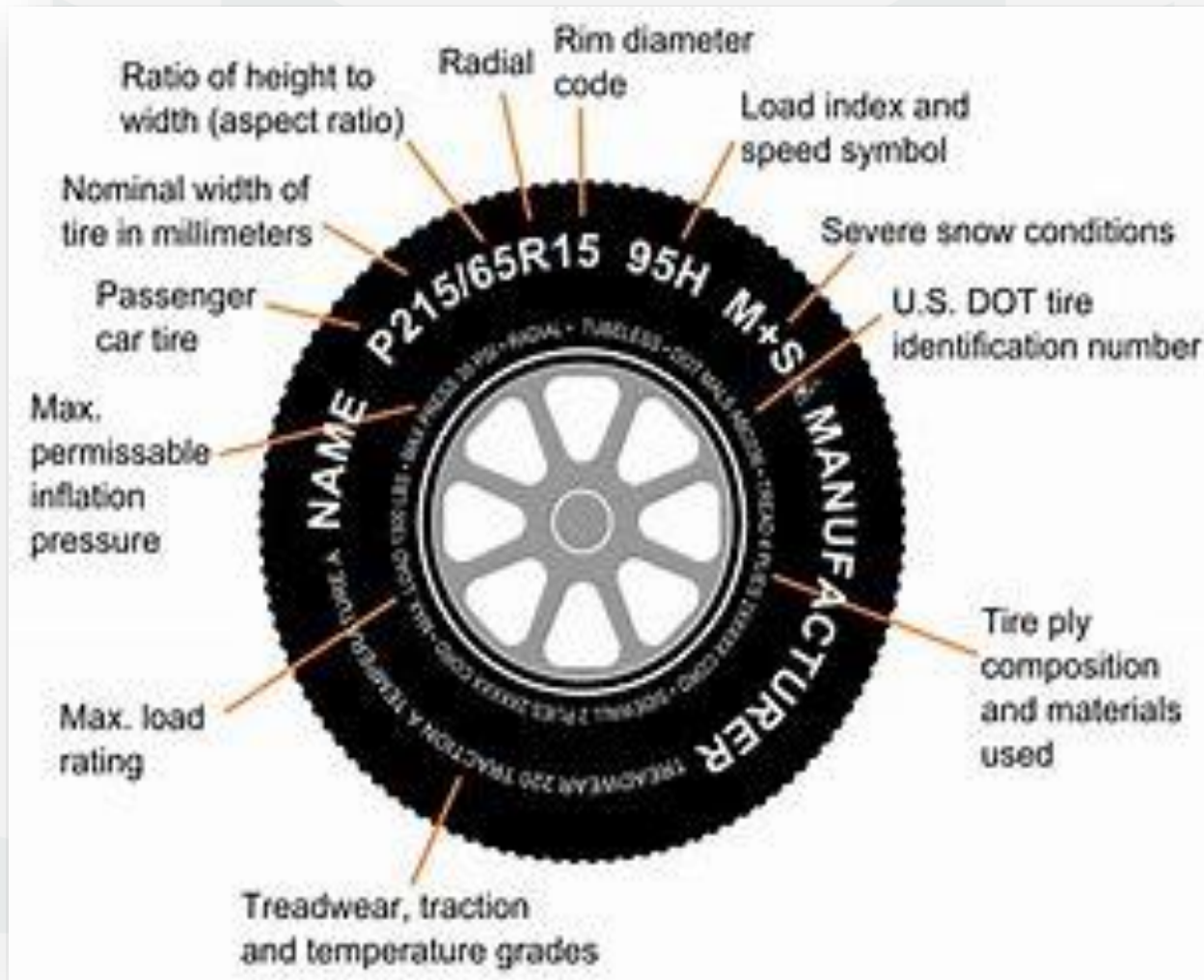
- Manifested waste tire
- Unmanifested waste tire
- Adjustment tire
- Recall tire



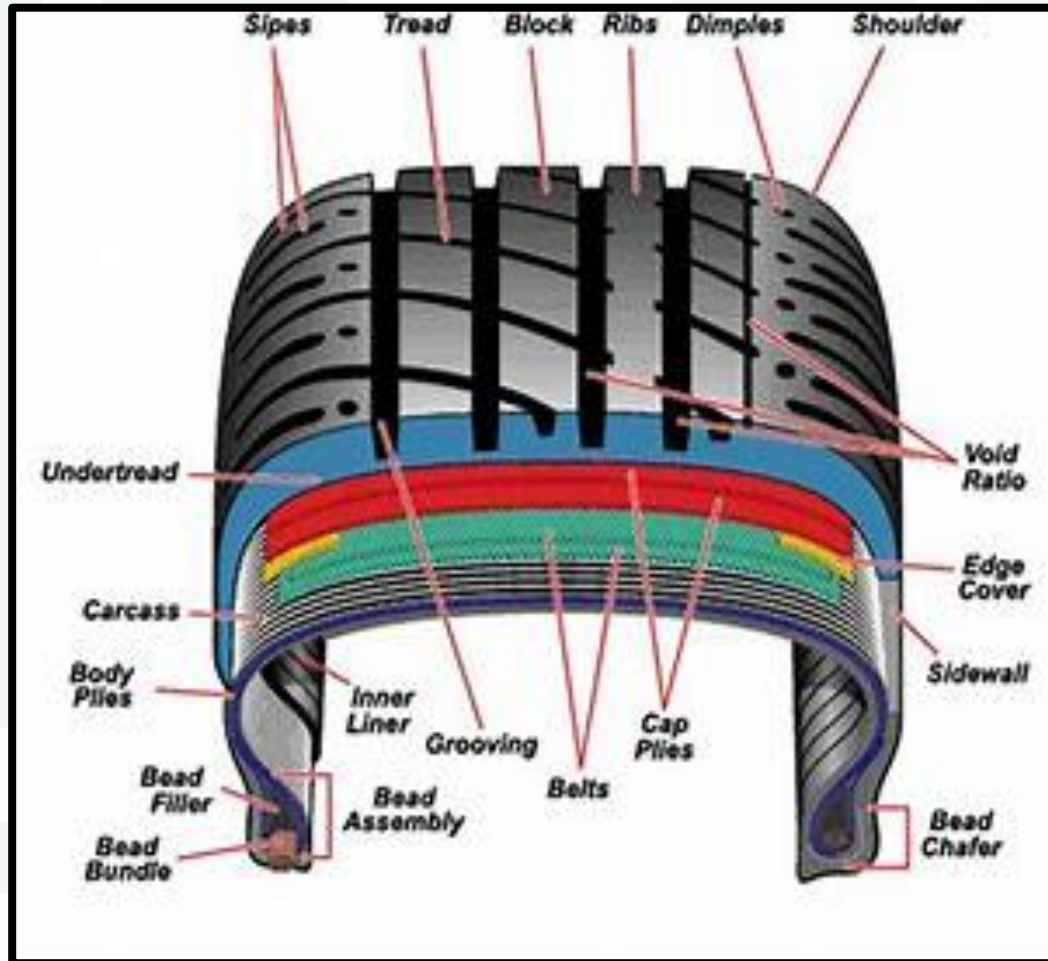
# TIRE

A continuous solid or pneumatic rubber covering encircling the wheel of a motor vehicle or off-road vehicle.

# TIRE DIAGRAM



# TIRE STRUCTURE



Tire Works 2021

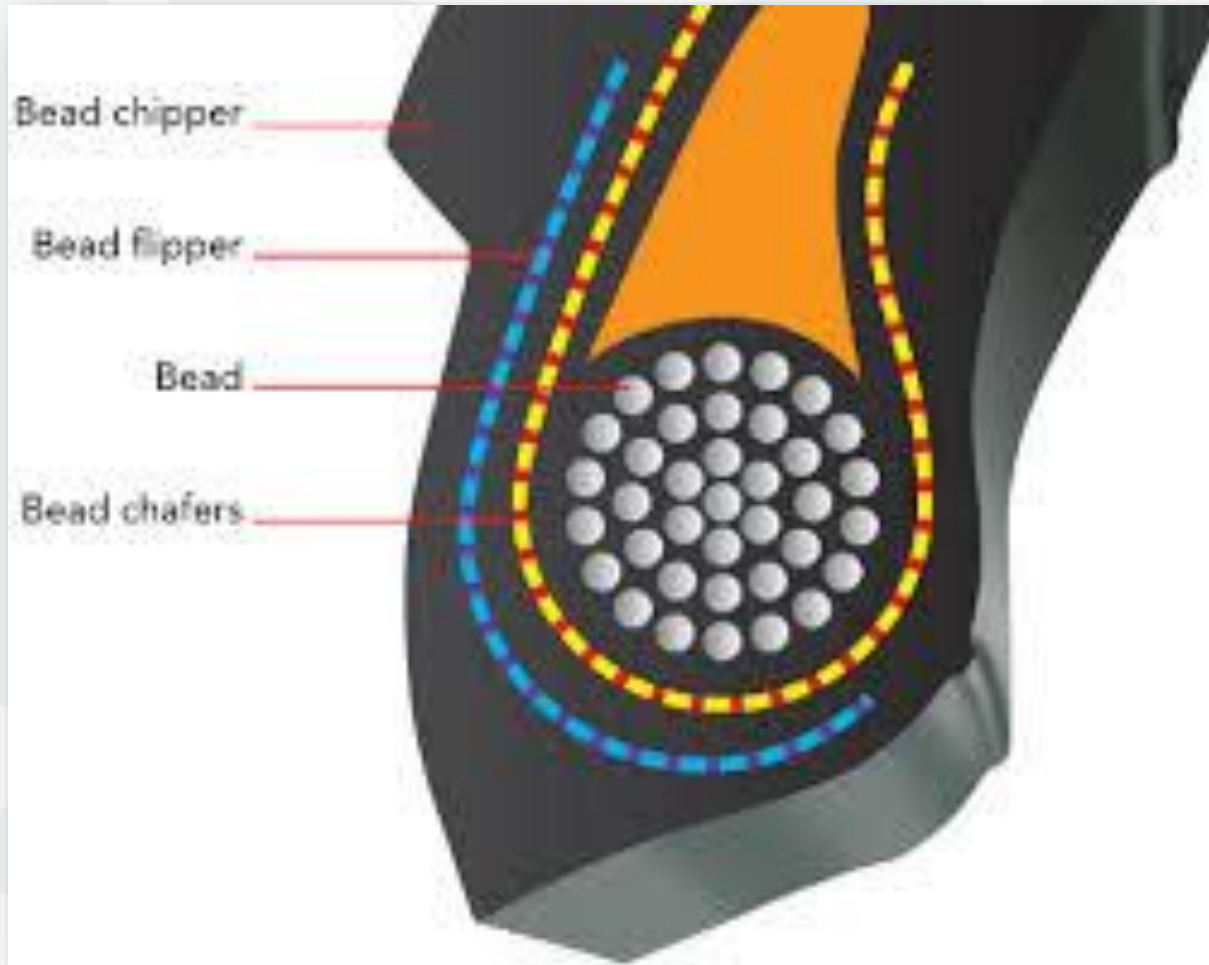


LOUISIANA DEPARTMENT OF ENVIRONMENTAL QUALITY

**ENVIROSCHOOL**

# TIRE STRUCTURE

## Bead Assembly



# TIRE STRUCTURE



Kartfab 2021



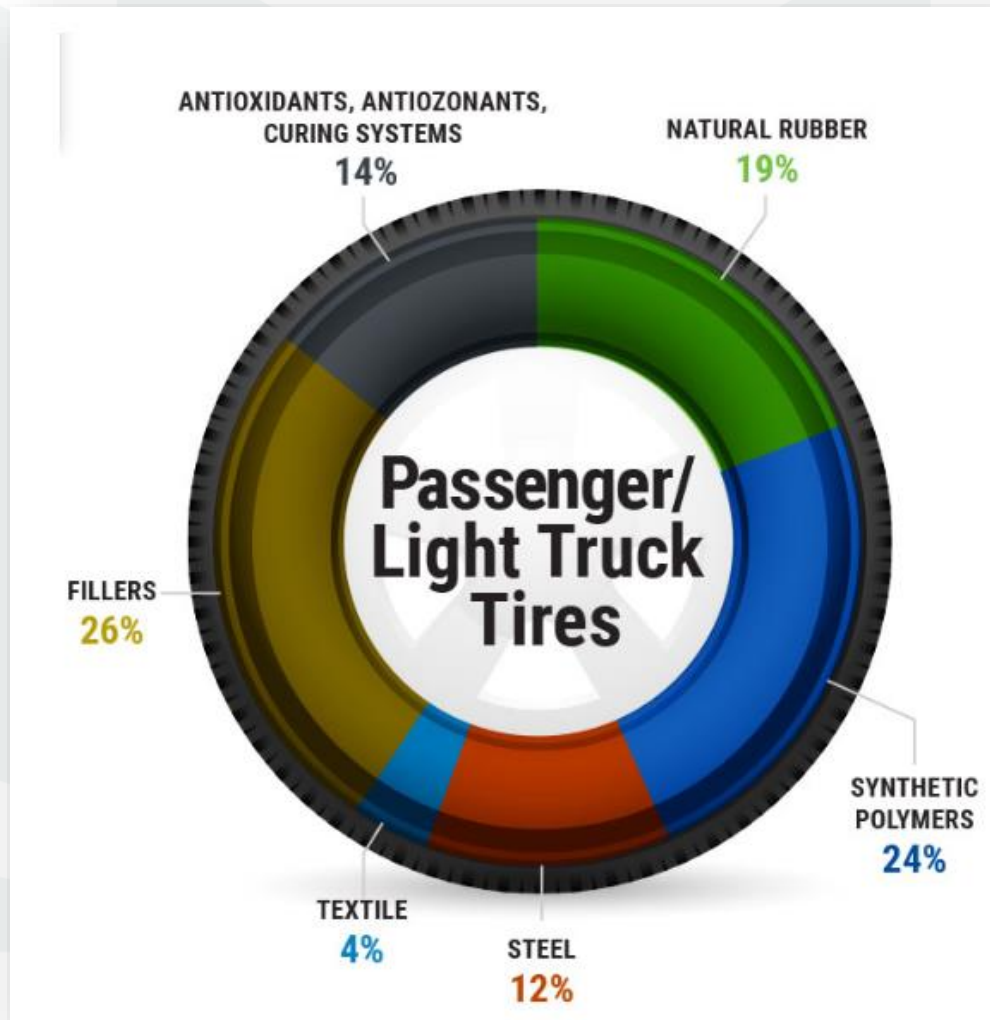
LOUISIANA DEPARTMENT OF ENVIRONMENTAL QUALITY  
**ENVIROSCHOOL**



# TIRE STRUCTURE



# TIRE COMPONENTS

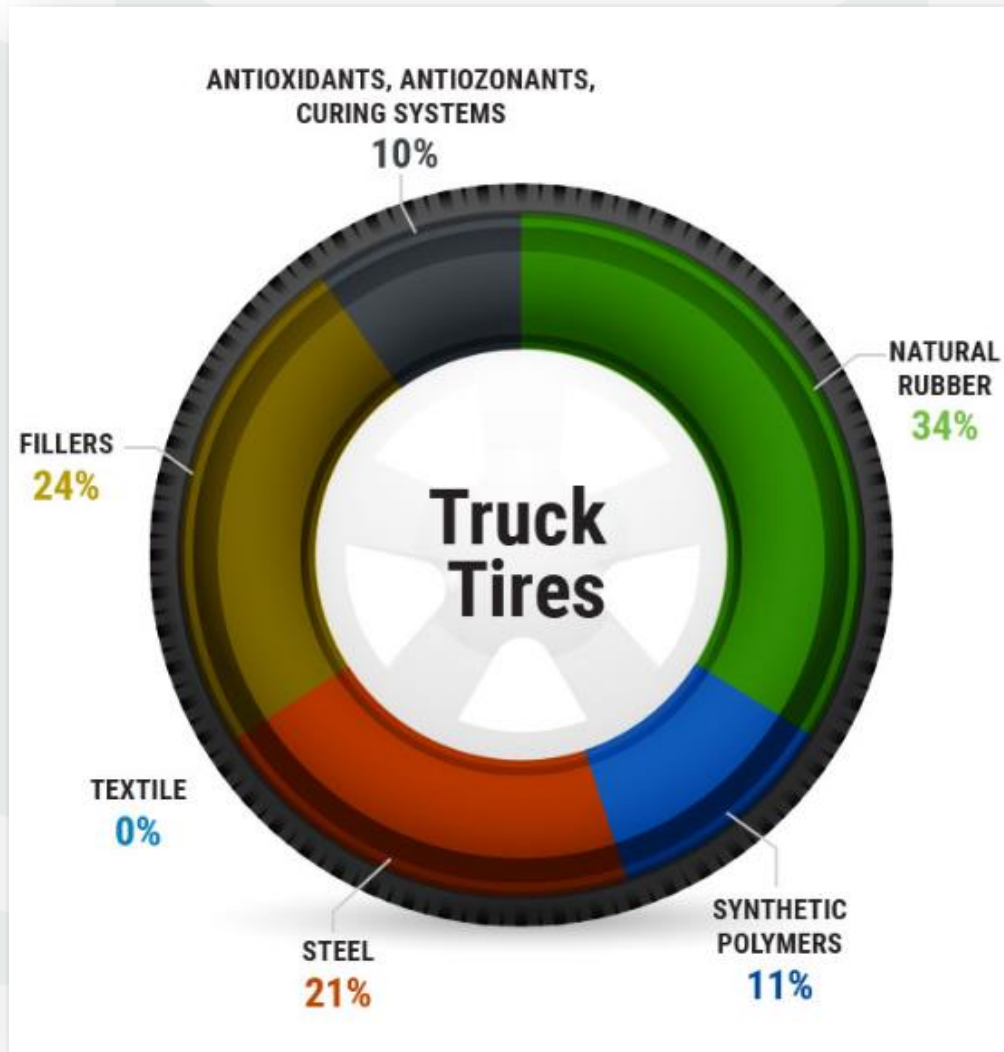


Tire Works 2021



LOUISIANA DEPARTMENT OF ENVIRONMENTAL QUALITY  
**ENVIROSCHOOL**

# TIRE COMPONENTS



Tire Works 2021



LOUISIANA DEPARTMENT OF ENVIRONMENTAL QUALITY  
**ENVIROSCHOOL**

# USED TIRE

A tire that can be salvaged and sold as a functional motor vehicle tire consistent with definitions and standards contained in the Louisiana Department of Public Safety regulations.

# WASTE TIRE

A whole tire that is no longer suitable for its original purpose because of wear, damage, or defect and/or has been discarded by the consumer.

# MANIFESTED WASTE TIRE

Not defined in regulation  
(although manifest is defined)

A waste tire transported with an  
accompanying waste tire manifest.

# UNMANIFESTED WASTE TIRE

Not defined in regulation

A waste tire transported without a waste tire manifest.

# TRACKING WASTE TIRES

Manifest = “The mechanism provided by the administrative authority, used for identifying the quantity, type, origin, transportation, and destination of waste tires and/or waste tire material from the point of generation to the authorized destination.”



# LDEQ Waste Tire Generator Manifest

Number: **5039802**

**GENERATOR'S WASTE TIRE MANIFEST**  
STATE OF LOUISIANA  
DEPARTMENT OF ENVIRONMENTAL QUALITY  
WASTE TIRE SECTION  
POST OFFICE BOX 4303  
BATON ROUGE, LOUISIANA 70821-4303  
QUESTIONS 1-866-896-LDEQ (5337)

Review instructions on back prior to completing this manifest  
FOR OFFICE USE ONLY

PLEASE PRINT OR TYPE

**Section 1. GENERATOR:**

NAME OF GENERATOR \_\_\_\_\_ R# \_\_\_\_\_ AI# \_\_\_\_\_  
DEQ FACILITY # \_\_\_\_\_ AGENCY INTEREST # \_\_\_\_\_  
PHYSICAL LOCATION ADDRESS \_\_\_\_\_ CITY, STATE, ZIP CODE \_\_\_\_\_ AREA CODE \_\_\_\_\_ PHONE # \_\_\_\_\_  
MAILING ADDRESS IF DIFFERENT FROM PHYSICAL LOCATION ADDRESS \_\_\_\_\_

**ELIGIBLE TIRES**  
A: # of Passenger/Light Truck Tires \_\_\_\_\_ B: # of Medium Truck Tires \_\_\_\_\_ C: # of Off Road Tires \_\_\_\_\_ D: # of Exempt Tires \_\_\_\_\_

**INELIGIBLE TIRES**  
E: # of Passenger/Light Truck Tires \_\_\_\_\_ F: # of Medium Truck Tires \_\_\_\_\_ G: # of Off Road Tires \_\_\_\_\_ H: # of Exempt Tires \_\_\_\_\_

PRINT NAME \_\_\_\_\_ SIGNATURE\* \_\_\_\_\_ DATE \_\_\_\_\_

**Section 2. TRANSPORTER NO. 1:**

NAME OF 1<sup>st</sup> TRANSPORTER \_\_\_\_\_ AI# \_\_\_\_\_  
R# \_\_\_\_\_ DEQ FACILITY # \_\_\_\_\_ T# \_\_\_\_\_ AGENCY INTEREST # \_\_\_\_\_  
TRANSPORTER AUTHORIZATION CERTIFICATE # \_\_\_\_\_ AREA CODE \_\_\_\_\_ PHONE # \_\_\_\_\_  
PRINT NAME \_\_\_\_\_ SIGNATURE\* \_\_\_\_\_ DATE \_\_\_\_\_

**ELIGIBLE USED TIRES CULLED**  
I: # of Passenger/Light Truck Tires \_\_\_\_\_ J: # of Medium Truck Tires \_\_\_\_\_ K: # of Off Road Tires \_\_\_\_\_ L: # of Exempt Tires \_\_\_\_\_

**INELIGIBLE USED TIRES CULLED**  
M: # of Passenger/Light Truck Tires \_\_\_\_\_ N: # of Medium Truck Tires \_\_\_\_\_ O: # of Off Road Tires \_\_\_\_\_ P: # of Exempt Tires \_\_\_\_\_

TRANSPORTER NO. 2:

NAME OF 2<sup>nd</sup> TRANSPORTER \_\_\_\_\_ AI# \_\_\_\_\_  
R# \_\_\_\_\_ DEQ FACILITY # \_\_\_\_\_ T# \_\_\_\_\_ AGENCY INTEREST # \_\_\_\_\_  
TRANSPORTER AUTHORIZATION CERTIFICATE # \_\_\_\_\_ AREA CODE \_\_\_\_\_ PHONE # \_\_\_\_\_  
PRINT NAME \_\_\_\_\_ SIGNATURE\* \_\_\_\_\_ DATE \_\_\_\_\_

**ELIGIBLE USED TIRES CULLED**  
Q: # of Passenger/Light Truck Tires \_\_\_\_\_ R: # of Medium Truck Tires \_\_\_\_\_ S: # of Off Road Tires \_\_\_\_\_ T: # of Exempt Tires \_\_\_\_\_

**INELIGIBLE USED TIRES CULLED**  
U: # of Passenger/Light Truck Tires \_\_\_\_\_ V: # of Medium Truck Tires \_\_\_\_\_ W: # of Off Road Tires \_\_\_\_\_ X: # of Exempt Tires \_\_\_\_\_

**Section 3. MANUFACTURER ADJUSTMENTS:**

NAME OF MANUFACTURER / MANUFACTURER'S REPRESENTATIVE RECEIVING TIRES \_\_\_\_\_

**MANUFACTURER ADJUSTMENTS**  
Y: # of Passenger/Light Truck Tires \_\_\_\_\_ Z: # of Medium Truck Tires \_\_\_\_\_ AA: # of Off Road Tires \_\_\_\_\_ BB: # of Exempt Tires \_\_\_\_\_

GENERATOR INITIALS\* \_\_\_\_\_ DATE \_\_\_\_\_ TRANSPORTER INITIALS\* \_\_\_\_\_ DATE \_\_\_\_\_

**Section 4. WASTE TIRE DESTINATION:**

NAME OF DESTINATION FACILITY \_\_\_\_\_ R# \_\_\_\_\_ AI# \_\_\_\_\_  
DEQ FACILITY # \_\_\_\_\_ AGENCY INTEREST # \_\_\_\_\_  
INBOUND TRUCK/TRAILER TICKET # \_\_\_\_\_

**ELIGIBLE TIRES**  
CC: # of Passenger/Light Truck Tires \_\_\_\_\_ DD: # of Medium Truck Tires \_\_\_\_\_ EE: # of Off Road Tires \_\_\_\_\_ FF: # of Exempt Tires \_\_\_\_\_

**INELIGIBLE TIRES**  
GG: # of Passenger/Light Truck Tires \_\_\_\_\_ HH: # of Medium Truck Tires \_\_\_\_\_ II: # of Off Road Tires \_\_\_\_\_ JJ: # of Exempt Tires \_\_\_\_\_

PRINT NAME \_\_\_\_\_ SIGNATURE\*\* \_\_\_\_\_ DATE \_\_\_\_\_

**CERTIFICATIONS**

\*I CERTIFY, UNDER PENALTY OF LAW, THAT ALL ELIGIBLE TIRES LISTED AND CATEGORIZED ABOVE WERE GENERATED IN THE STATE OF LOUISIANA AND HAVE SUPPORTING DOCUMENTATION. I (WE) ARE AWARE THAT THERE ARE SIGNIFICANT PENALTIES FOR SUBMITTING FALSE INFORMATION, INCLUDING THE POSSIBILITY OF FINE AND IMPRISONMENT.

\*\*I (WE) HAVE PERSONALLY EXAMINED AND AM FAMILIAR WITH THE INFORMATION SUBMITTED IN THIS DOCUMENT, AND I (WE) CERTIFY UNDER PENALTY OF LAW THAT I (WE) HAVE NO KNOWLEDGE CONTRARY TO THE REPRESENTATIONS OF THE GENERATOR AND TRANSPORTER. I (WE) ARE AWARE THAT THERE ARE SIGNIFICANT PENALTIES FOR SUBMITTING FALSE INFORMATION, INCLUDING THE POSSIBILITY OF FINE AND IMPRISONMENT.

DEQ Wt-1 C ORIGINAL TO BE RETURNED TO ADMINISTRATIVE AUTHORITY  
REV. 10/13 70107

ORIGINAL TO BE RETURNED TO ADMINISTRATIVE AUTHORITY BY THE DESTINATION FACILITY



# LDEQ Waste Tire Processor Manifest

Number: **9004203**

**PROCESSOR'S WASTE TIRE MANIFEST**

STATE OF LOUISIANA  
DEPARTMENT OF ENVIRONMENTAL QUALITY  
WASTE TIRE SECTION  
POST OFFICE BOX 4303  
BATON ROUGE, LOUISIANA 70821-4303  
QUESTIONS 1-866-896-LDEQ (5337)

Review instructions on back prior to completing this manifest  
FOR OFFICE USE ONLY

PLEASE PRINT OR TYPE

**Section 1. PROCESSOR:** NAME OF PROCESSOR \_\_\_\_\_ R# \_\_\_\_\_ AI# \_\_\_\_\_  
DEQ FACILITY # \_\_\_\_\_ AGENCY INTEREST # \_\_\_\_\_

**ELIGIBLE USED TIRES**  
A: # of Passenger/Light Truck Tires \_\_\_\_\_ B: # of Medium Truck Tires \_\_\_\_\_ C: # of Off Road Tires \_\_\_\_\_ D: # of Exempt Tires \_\_\_\_\_

**INELIGIBLE TIRES**  
E: # of Passenger/Light Truck Tires \_\_\_\_\_ F: # of Medium Truck Tires \_\_\_\_\_ G: # of Off Road Tires \_\_\_\_\_ H: # of Exempt Tires and non-program tires \_\_\_\_\_

**MARKETED ELIGIBLE WHOLE WASTE TIRES**  
I: # of Passenger/Light Truck Tires \_\_\_\_\_ J: # of Medium Truck Tires \_\_\_\_\_ K: # of Off Road Tires \_\_\_\_\_ L: # of Exempt Tires \_\_\_\_\_

**MARKETED ELIGIBLE WASTE TIRE MATERIAL**  
Gross Weight (lbs) \_\_\_\_\_ Ticket # \_\_\_\_\_ Date \_\_\_\_\_  
Tare Weight (lbs) \_\_\_\_\_ Ticket # \_\_\_\_\_ Date \_\_\_\_\_

**INELIGIBLE WASTE TIRE MATERIAL**  
Gross Weight (lbs) \_\_\_\_\_ Ticket # \_\_\_\_\_ Date \_\_\_\_\_  
Tare Weight (lbs) \_\_\_\_\_ Ticket # \_\_\_\_\_ Date \_\_\_\_\_

PRINT NAME \_\_\_\_\_ SIGNATURE\* \_\_\_\_\_ DATE \_\_\_\_\_

**Section 2. TRANSPORTER:** NAME OF TRANSPORTER \_\_\_\_\_ AI# \_\_\_\_\_  
R# \_\_\_\_\_ AGENCY INTEREST # \_\_\_\_\_  
DEQ FACILITY # \_\_\_\_\_ TRUCK LICENSE PLATE # \_\_\_\_\_ STATE \_\_\_\_\_ LOAD # \_\_\_\_\_ AREA CODE \_\_\_\_\_ PHONE NUMBER \_\_\_\_\_  
PRINT NAME \_\_\_\_\_ SIGNATURE\* \_\_\_\_\_ DATE \_\_\_\_\_

**Section 3. MANUFACTURER ADJUSTMENTS:** NAME OF MANUFACTURER / MANUFACTURER'S REPRESENTATIVE RECEIVING TIRES \_\_\_\_\_

**MANUFACTURER ADJUSTMENTS**  
M: # of Passenger/Light Truck Tires \_\_\_\_\_ N: # of Medium Truck Tires \_\_\_\_\_ O: # of Off Road Tires \_\_\_\_\_ P: # of Exempt Tires \_\_\_\_\_

PROCESSOR INITIALS\* \_\_\_\_\_ DATE \_\_\_\_\_ TRANSPORTER INITIALS\* \_\_\_\_\_ DATE \_\_\_\_\_

**Section 4. DESTINATION FACILITY:** NAME OF DESTINATION FACILITY \_\_\_\_\_ R# \_\_\_\_\_ AI# \_\_\_\_\_  
DEQ FACILITY # \_\_\_\_\_ AGENCY INTEREST # \_\_\_\_\_  
PROJECT # \_\_\_\_\_

**ELIGIBLE USED TIRES**  
Q: # of Passenger/Light Truck Tires \_\_\_\_\_ R: # of Medium Truck Tires \_\_\_\_\_ S: # of Off Road Tires \_\_\_\_\_ T: # of Exempt Tires \_\_\_\_\_

**INELIGIBLE TIRES**  
U: # of Passenger/Light Truck Tires \_\_\_\_\_ V: # of Medium Truck Tires \_\_\_\_\_ W: # of Off Road Tires \_\_\_\_\_ X: # of Exempt Tires and non-program tires \_\_\_\_\_

**MARKETED ELIGIBLE WHOLE WASTE TIRES**  
Y: # of Passenger/Light Truck Tires \_\_\_\_\_ Z: # of Medium Truck Tires \_\_\_\_\_ AA: # of Off Road Tires \_\_\_\_\_ BB: # of Exempt Tires \_\_\_\_\_

**MARKETED ELIGIBLE WASTE TIRE MATERIAL**  
Net Weight (lbs) \_\_\_\_\_

**INELIGIBLE WASTE TIRE MATERIAL**  
Net Weight (lbs) \_\_\_\_\_

PRINT NAME \_\_\_\_\_ SIGNATURE\* \_\_\_\_\_ DATE \_\_\_\_\_

\*CERTIFICATION  
I (WE) HAVE PERSONALLY EXAMINED AND AM FAMILIAR WITH THE INFORMATION SUBMITTED IN THIS DOCUMENT, AND I (WE) CERTIFY UNDER PENALTY OF LAW THAT I (WE) HAVE NO KNOWLEDGE CONTRARY TO THE REPRESENTATION OF THE GENERATOR AND TRANSPORTER. I (WE) ARE AWARE THAT THERE ARE SIGNIFICANT PENALTIES FOR SUBMITTING FALSE INFORMATION INCLUDING THE POSSIBILITY OF FINE AND IMPRISONMENT.  
DEQ WTI-2  
REV. 10/13

ORIGINAL TO BE RETURNED TO ADMINISTRATIVE AUTHORITY BY THE DESTINATION FACILITY



# PROGRAM ELIGIBLE WASTE TIRES

Waste tires generated in Louisiana on which the LDEQ environmental fee was paid, originating from an authorized tire dealer, collected by permitted collection center, authorized government tire sweep, removed from a Louisiana titled vehicle dealer at a salvage yard, collected at a permitted processing facility in accordance with regulation, or otherwise determined eligible by the LDEQ.

# PROGRAM ELIGIBLE WASTE TIRES

A processor may be reimbursed by the Waste Tire Management Fund (WTMF) for eligible waste tires and/or eligible wtm delivered to a Department-approved beneficial end-use project

# WASTE TIRE MANAGEMENT FUND

Established to administer the waste tire program authorized by L.R.S.30:2418.

# WASTE TIRE MANAGEMENT FUND

- Fees collected in association with tire sales remitted to LDEQ monthly deposited into the WTMF.
- Processor reimbursements for eligible waste tires/wtm delivered to approved projects come from the WTMF.

# PROCESSOR REIMBURSEMENTS

May request reimbursements of \$ **0.075** per pound from the LDEQ WTMF for eligible WTM delivered to approved end use projects

# PROGRAM **INELIGIBLE** WASTE TIRES

Waste tires for which a processor will not be reimbursed by the Waste Tire Management Fund. These include tires weighing more than 500 lbs. at the time of sale, solid tires, tires on which the LDEQ environmental fee has not been paid, out of state tires, purchased used tires not suitable for re-sale, etc.



# WASTE TIRE *HANDLERS*

*(defined in regulations)*

- Generator
- Transporter
- Processor
- Collection Center
- Mobile Processor
- Destination Facility
- End Market User
- New Tire Dealer
- Used Tire Dealer
- Tire Wholesaler
- Scrapyard
- *New/Used Vehicle Dealer*



# WASTE TIRE GENERATORS

Generator = “A person whose activities, whether authorized or unauthorized, result in the production of waste tires. This may include, but is not limited to, tire dealers, salvage yards, etc.”

*Currently approximately 3,800 licensed generators in Louisiana*

# WASTE TIRE GENERATORS

## Generator Types

- New and Used Car Dealerships
- Automotive and Tire Repair Shops
- Auto Salvage and Scrap Yards
- Government Collection Centers/Transfer Facilities
- Unauthorized Waste Tire Piles
- Landfills/Collection Centers

# WASTE TIRE GENERATORS

- Must notify of activity and receive authorization (Generator Identification Number) from the Waste Permits Division
- Must display notification regarding fees
- Must collect appropriate fees (LRS 30:2418.I(1)) and remit fees to the LDEQ on or before the 20<sup>th</sup> day of each month

# LDEQ Waste Tire Generator Notification Form



## WASTE TIRE GENERATOR NOTIFICATION FORM

LOUISIANA DEPARTMENT OF ENVIRONMENTAL QUALITY  
 OFFICE OF ENVIRONMENTAL SERVICES  
 WASTE PERMITS DIVISION  
 P.O. Box 4313  
 Baton Rouge, Louisiana 70821-4313

### FOR OFFICE USE ONLY

Agency Interest #: \_\_\_\_\_  
 DEQ Account #: **WT-** \_\_\_\_\_  
 DEQ Facility #: **R-** \_\_\_\_\_

In order for the Department to process this form, all sections must be completed and the original signed copy must be mailed to the Department at the address above. A guidance document has been prepared by the Department of Environmental Quality (LDEQ) to assist in completing this form and should be consulted prior to providing responses to the information required to be contained in this application. If you have questions concerning this form, please email [wastetires@la.gov](mailto:wastetires@la.gov).

#### 1. TYPE OF APPLICATION

- |  |   |                                   |
|--|---|-----------------------------------|
| <input type="checkbox"/> New Application     | <input type="checkbox"/> Change in Ownership*         | Date Business Opened: _____       |
| <input type="checkbox"/> Name Change         | <input type="checkbox"/> Change in Physical Location* | Date of Tire/Vehicle Sales: _____ |
| <input type="checkbox"/> Information Update† |   |                                   |

\*Section 3 must be completed for changes in ownership or location †Explanation must accompany form

#### 2. APPLICANT INFORMATION

<b>Name of Business or Governmental Organization:***</b> _____	<b>Property Owner:</b> (if leased, a copy of agreement must be provided) _____
<b>Name of Business Owner:</b> _____	<b>Waste Tire Contact Person:</b> _____
<b>Facility Physical Address:</b> (street) _____ (city, state, zip) _____	<b>Business Mailing Address:</b> (street) _____ (city, state, zip) _____
<b>Parish:</b> _____	<b>Waste Tire Contact Phone Number:</b> _____
<b>Phone Number:</b> _____	<b>Waste Tire Contact Email Address:</b> _____
<b>Fax Number:</b> _____	<b>Driver's License Number:</b> _____ <b>State:</b> _____ (attach copy)
<b>Number of Locations Owned:</b> _____	<b>State Tax ID:</b> _____
<b>Federal Tax ID or Social Security Number:</b> _____	<b>***ATTACH COPY OF SECRETARY OF STATE CERTIFICATE</b>

#### 3. PREVIOUS OWNERSHIP OR LOCATION INFORMATION

<b>Previous Owner Business Name:</b> _____	<b>Date of Change:</b> _____
<b>Previous Physical Location Address:</b> _____	<b>Previous AI Number:</b> _____

#### 4. GENERATION OF TIRES

**Functions of Business:**  
(check all that apply)

<input type="checkbox"/> New Tire Dealer	<input type="checkbox"/> Used Tire Dealer	<input type="checkbox"/> Wholesale Tire Sales
<input type="checkbox"/> New Vehicle/ATV/UTV Dealer	<input type="checkbox"/> Used Vehicle/ATV/UTV Dealer	<input type="checkbox"/> Tire Generator – No Sales†
<input type="checkbox"/> Retread Facility	<input type="checkbox"/> Fleet Operator	<input type="checkbox"/> Ineligible
<input type="checkbox"/> Landfill	<input type="checkbox"/> Authorized Collection Center	<input type="checkbox"/> Parish/DOTD Collection Center
<input type="checkbox"/> Salvage* (attach copy of Auto Dismantler or Crusher License)	<input type="checkbox"/> Other‡	

Explanation must be provided\*: \_\_\_\_\_

**Exemptions:** (check all that apply)  Go/Golf-Cart Tires  Small Lawn/Yard Equipment  Bicycle

#### 5. CERTIFICATION

I personally examined and am familiar with the information submitted in this document, and I hereby certify under penalty of law that this information is true, accurate, and complete to the best of my knowledge. I am aware that there are significant penalties for submitting false information including the possibility of fine and imprisonment.

AUTHORIZED SIGNATURE: \_\_\_\_\_ DATE: \_\_\_\_\_

PRINTED NAME: \_\_\_\_\_

Revised 05/1/2018



LOUISIANA DEPARTMENT OF ENVIRONMENTAL QUALITY  
**ENVIROSCHOOL**

# WASTE TIRE FEES

- **Passenger tire fee.....\$2.25**
- **Medium truck tire fee.....\$5.00**
- **Off-road tire fee.....\$10.00**
- **Re-tread tire fee.....\$1.25**
  
- *Some tires are fee-exempt (solid tires, tires weighing 500 lbs. or more at time of sale, golf cart tires, bicycle tires, and lawn mower tires)*

# WASTE TIRE TRANSPORTER

## Transporter Definition (Title 33:VII.10505)

A person who transports waste tires

Standards and Responsibilities of Waste Tire  
Generators and Sellers of Tires (33:VII.10519)

# WASTE TIRE TRANSPORTERS

- Transporting > 20 waste tires at one time in Louisiana requires a person to obtain a Waste Tire Transporter Authorization Certificate issued by the LDEQ Waste Permits Division.
- **ALL** authorizations expire July 31 of every year. Certificates must be renewed annually.



# WASTE TIRE TRANSPORTERS

- Transporter must also submit proof of vehicle registration, proof of commercial liability insurance and financial assurance in the form of a surety bond in a minimum amount of \$10,000.
- Decals on vehicles are also required.
- Additional fees required for additional vehicles.

# WASTE TIRE TRANSPORTERS

- Persons transporting  $\leq 20$  waste tires at a time are not required to obtain an Authorization Certificate.
- Persons transporting waste tire material (WTM) are not required to obtain an Authorization Certificate.



# WASTE TIRE TRANSPORTER AND TRANSFER FACILITY APPLICATION FORM

LOUISIANA DEPARTMENT OF ENVIRONMENTAL QUALITY  
OFFICE OF ENVIRONMENTAL SERVICES  
WASTE PERMITS DIVISION  
P.O. Box 4313  
Baton Rouge, Louisiana 70821-4313

## FOR OFFICE USE ONLY

AGENCY INTEREST #: \_\_\_\_\_

DEQ FACILITY #: R- \_\_\_\_\_

TRANSPORTER #: T- \_\_\_\_\_

In order for the Department to process this form, all sections must be completed and the original signed copy must be mailed to the Department at the address above. A *guidance* document has been prepared by the Department of Environmental Quality (LDEQ) to assist in completing this form and should be consulted prior to providing responses to the information required to be contained in this application. If you have questions concerning this form, please email [wastetires@la.gov](mailto:wastetires@la.gov).

### 1. TYPE OF APPLICATION

- New Application
  Renewal Application
  Modification Application  
 Business Closure\*  
 Date of Closure\*: \_\_\_\_\_

### 2. ACTIVITY INFORMATION \*

- |   |  |
|---|--|
| <b>Type of Facility</b><br><input type="checkbox"/> Transporter<br><input type="checkbox"/> Transfer Facility | <b>Activity Location (transporters only)</b><br><input type="checkbox"/> In state transportation of waste tires only<br><input type="checkbox"/> Out of state transportation of waste tires only<br><input type="checkbox"/> Transportation of waste tire material only<br><input type="checkbox"/> Both in state and out of state transportation of waste tires |
|---|--|

### 3. APPLICANT INFORMATION \*

Name of Business or Governmental Organization: \_\_\_\_\_

Waste Tire Contact Person: \_\_\_\_\_

Waste Tire Contact Phone Number: \_\_\_\_\_ Waste Tire Contact Email Address: \_\_\_\_\_

Facility Physical Address: \_\_\_\_\_ (street)  
 \_\_\_\_\_ (city, state, zip)

Business Mailing Address: \_\_\_\_\_ (street)  
 \_\_\_\_\_ (city, state, zip)

Parish: \_\_\_\_\_ Business Phone Number: \_\_\_\_\_  
 Business Fax Number: \_\_\_\_\_

### 4. PAYMENT INFORMATION

Check
  Money Order
 Check/Money Order Number: \_\_\_\_\_ Amount Paid: \_\_\_\_\_

### 5. REQUIREMENTS

- Proof of Commercial Liability Insurance for each vehicle
- Surety Bond in minimum amount of \$10,000 containing the language provided in LAC 33:VII.11103.Appendix B.
- Copy of Vehicle Registration or Lease Agreement for each vehicle.

# LDEQ Waste Tire Transporter and Transfer Facility Application Form

# WASTE TIRE PROCESSOR

## Processor Definition (Title 33:VII.10505)

Person who “processes” waste tires. Processing is the activity that alters whole tires by cutting, chipping, grinding, etc., so that they are no longer whole.

Standards and Responsibilities of Waste Tire Processors (Title 33:VII.10525)

# WASTE TIRE PROCESSORS

## Waste Tire Processors in Louisiana

- Colt, Inc. (2 facilities)
- Environmental Industries Recycling, Inc.
- Benson Environmental Services of La. Inc.
- Cottonport Monofill
- Franklin Rubber Resources, LLC

# Benson Environmental Services of Louisiana, Inc.



# Colt, Inc. Scott LA



# Colt, Inc. New Orleans





# ENVIRONMENTAL INDUSTRIES RECYCLING, Inc.

EIR, Inc. Port Allen, La.

Legend



Google Earth

©2019 Europa Technologies  
© 2019 Google

# Franklin Rubber Resources, LLC



# Cottonport Monofill



# WASTE TIRE PROCESSOR PERMIT

- Valid for five years
- LDEQ shall public notice upon receipt of application
- Public hearing within 60 days of application submission
- Public comment period at least 30 days after hearing
- LDEQ response to public comments

# WASTE TIRE PROCESSOR PERMIT REQUIREMENTS

- Permit must include financial assurance for closure of facility
  - Financial Guarantee Bond
  - Performance Bond
  - Irrevocable Letter of Credit
- \$20/ton of waste tires and/or waste tire material

# WASTE TIRE PROCESSOR PERMIT REQUIREMENTS

- Monthly reports tracking WTM delivered to approved projects
  - Generator Manifests
  - Processor Manifests (incl. certified scale-weight tickets)
  - Collection Center Reports
  - Requests for Payment
  - Generator/Processor Spreadsheets

# WASTE TIRE PROCESSOR PERMIT REQUIREMENTS

- Annual agreement with LDEQ
  - Agreements establish requirements for reimbursement from the Waste Tire Management Fund (WTMF). (Department-approved project/beneficial use, generator and processor manifests, electronic reports, inventory reports, collection center reports, etc.)

# WASTE TIRE PROCESSOR REQUIREMENTS FOR REIMBURSEMENT FROM WTMF

- Eligible/ineligible WTM resulting from the waste tire processing can be used in approved projects, but only **eligible** WTM can be reimbursed.
- Eligible/ineligible WTM can be legally disposed in landfills, excluding C&D landfills.



# LDEQ WASTE PERMITS DIVISION

## WASTE TIRE SECTION

Waste Tire Section of Waste Permits Division provides qc reviews of all monthly reporting documentation submitted in support of reimbursement requests from processors

# END-MARKET USE PROJECTS

- Civil engineering/Land reclamation
- Tire derived fuel (TDF)
- Ground rubber (crumb)
- Tire derived aggregate (TDA)
- Landfill leachate collection systems
- Landfill gas collection systems
- Bulkheads
- De-polymerization



# Calendar Year 2020 Summary

Project Types	Total number of approved projects	Projects to which wtm was delivered in 2020	Eligible wtm delivered	Ineligible wtm delivered	Total wtm delivered	% of total delivered
Bulkhead	2	1	251,920	0	251,920	0.17%
Crumb rubber	6	1	459,350	0	459,350	0.32%
De-polymerization	1	1	6,675,659	642,112	7,317,771	5.07%
Engineering	3	2	63,623,500	4,108,600	67,732,100	46.90%
Landfill fluids collection	1	1	1,999,360	0	1,999,360	1.38%
Land reclamation	1	1	41,472,320	593,560	42,065,880	29.13%
TDF	8	3	19,410,040	2,576,080	21,986,120	15.22%
Metal recycling	9	9	0	2,604,990	2,604,990	1.80%
<b>Total</b>	<b>31</b>	<b>19</b>	<b>133,892,149</b>	<b>10,525,342</b>	<b>144,417,491</b>	<b>100.00%</b>

# LAND RECLAMATION



# LAND RECLAMATION



LOUISIANA DEPARTMENT OF ENVIRONMENTAL QUALITY

**ENVIROSCHOOL**

# SLOPE STABILIZATION



# SLOPE STABILIZATION



LOUISIANA DEPARTMENT OF ENVIRONMENTAL QUALITY

**ENVIROSCHOOL**

# SLOPE STABILIZATION



LOUISIANA DEPARTMENT OF ENVIRONMENTAL QUALITY

**ENVIROSCHOOL**



# SLOPE STABILIZATION



# LANDFILL LEACHATE/GAS COLLECTION



LOUISIANA DEPARTMENT OF ENVIRONMENTAL QUALITY

**ENVIROSCHOOL**

# CRUMB RUBBER



LOUISIANA DEPARTMENT OF ENVIRONMENTAL QUALITY

**ENVIROSCHOOL**

# WASTE TIRE “CLEANUPS”

Title 33, Part VII, Subpart 2,  
Chapter 105,  
Section 10529 A through D

# WASTE TIRE “CLEANUPS”

- Property owners (A)
- Single event cleanups (B)
- Government tire sweeps (C)
- Waste tires discarded by third party (D)

# WASTE TIRE “CLEANUPS”

## Property Owners

- Property owner cannot be the generator
- Tires are ineligible
- $\leq 20$  per day to permitted processor
- $\leq 5$  per day to collection center
- Remove in accordance with Single Event Cleanup requirements (Sweep Form)

# WASTE TIRE “CLEANUPS”

## Single Event Cleanups

- Responsible business, organization, property owner, government entity
- Tires are ineligible
- Sweep form required (LDEQ web site)
- Notification to LDEQ at least 30 days prior
- Manifest requirements apply

# WASTE TIRE “CLEANUPS”

## Government Tire Sweeps

- No businesses
- Sweep form required
- 30 day notification required
- Tires are eligible
- Maximum 5 tires per person
- Use licensed transporter/permitted processor
- Comply with manifest requirements





# WASTE TIRE “CLEANUPS”

## Waste tires discarded by third party

- Property owners and government entities
- Notify LDEQ. Do not use the Sweep form.
- Police report and certification of information.
- Description of measures taken to prevent future incidents.
- Maximum eligibility per year 520 eligible tires
- Comply with manifest requirements.
- Licensed transporter/permitted processor.

# WASTE TIRE “CLEANUPS”

- Notification to the LDEQ for Property Owners, Single Event Cleanups, and Government Tire Sweeps is accomplished using the Waste Tire One Time Cleanup/Trash Bash Form available on the LDEQ public website. (*In the regulations it is entitled single event cleanup/government tire sweep form*)
- Notification for Third Party cleanups do not use that form

# Waste Tire One Time Cleanup/ Trash Bash Form



## WASTE TIRE SINGLE EVENT CLEANUP/GOVERNMENT TIRE SWEEP FORM

LOUISIANA DEPARTMENT OF ENVIRONMENTAL QUALITY  
OFFICE OF ENVIRONMENTAL SERVICES  
WASTE PERMITS DIVISION  
P.O. Box 4313  
Baton Rouge, Louisiana 70821-4313

FOR OFFICE USE ONLY

AGENCY INTEREST #: \_\_\_\_\_

DEQ FACILITY NUMBER: R- \_\_\_\_\_  
(ASSIGNED BY LDEQ)

DEQ EVENT NUMBER: \_\_\_\_\_  
(ASSIGNED BY LDEQ)

In order for the Department to process this form, all sections must be completed and the original signed copy must be mailed to the Department at the address above. If you have questions concerning this form, please email [wastetires@la.gov](mailto:wastetires@la.gov).

### 1. TYPE OF APPLICATION

- Single Event Cleanup (60-day cleanup)     Government Tire Sweep (1-day event)    Event Start Date (for Government Tire Sweep only) : \_\_\_\_\_  
 Modification

### 2. APPLICANT INFORMATION

Name of Responsible Business, Organization, Government Entity, or Property Owner: \_\_\_\_\_

Waste Tire Contact Person: \_\_\_\_\_

Facility Physical Address:

(street) \_\_\_\_\_  
(city, state, zip) \_\_\_\_\_

Parish: \_\_\_\_\_

Phone Number: \_\_\_\_\_

Business Mailing Address:

(street) \_\_\_\_\_  
(city, state, zip) \_\_\_\_\_

Phone Number: \_\_\_\_\_

Fax Number: \_\_\_\_\_

Email Address: \_\_\_\_\_

### 3. PROJECT INFORMATION

- Promiscuous Dump     Found on Property     Other  
 Called-in Complaint     Tire Sweep

Number of Tires: \_\_\_\_\_

Describe how the waste tires were generated:

\_\_\_\_\_  
\_\_\_\_\_

### 4. PROCESSOR INFORMATION:

Permitted Processor Selected (list provided): \_\_\_\_\_

### 5. CERTIFICATION

I personally examined and am familiar with the information submitted in this document, and I hereby certify under penalty of law that this information is true, accurate, and complete to the best of my knowledge. I am aware that there are significant penalties for submitting false information including the possibility of fine and imprisonment.

AUTHORIZED SIGNATURE: \_\_\_\_\_

DATE: \_\_\_\_\_

PRINTED NAME: \_\_\_\_\_



LOUISIANA DEPARTMENT OF ENVIRONMENTAL QUALITY  
**ENVIROSCHOOL**

# LDEQ TIRE WEIGHING

- LDEQ staff weigh several thousand tires of all categories to determine average tire mass
- On going program. Tires are weighed and results evaluated triennially
- Results are compared with processors calculations

# LDEQ TIRE WEIGHING

- Cumulatively, data suggest the following mass ranges.
- Passenger 27.27-30.68 lbs./tire
- Truck 108.31-115.45 lbs./tire
- OTR 186.45-426.67 lbs./tire
- Exempt 6.81-19.13 lbs./tire

# LDEQ TIRE WEIGHING

- Currently used LDEQ values are:

Passenger	28.15 lbs./tire
Truck	112.1 lbs./tire
OTR	210.5 lbs./tire
Exempt	7.7 lbs./tire

# LDEQ TIRE WEIGHING



# WASTE TIRE PROGRAM CHALLENGES

- Some generators not remitting fees to LDEQ
- Illegal dumping
- Scarcity of markets for WTM
- Generator storage issues (cover, vectors, etc.)
- Processors-storage inventories issues



# LDEQ CONTACT INFORMATION

LDEQ Headquarters

602 North Fifth Street

Baton Rouge, LA 70802

Customer Service Center

225-219-5337 or Toll Free 1-  
866-896-5337

# LDEQ SINGLE POINT OF CONTACT (SPOC)

Contact SPOC for notifications and complaints:

- By phone, 8:00 AM - 4:30 PM, Monday - Friday
- (225) 219-3640 or (888) 763-5424
- Hotline: (225) 342-1234
- By Fax: (225) 219-4044

# LDEQ HQ WASTE TIRE CONTACT INFORMATION

- [WasteTires@la.gov](mailto:WasteTires@la.gov)
- [Curt.Auzenne@la.gov](mailto:Curt.Auzenne@la.gov) for generator info
- [Jodie.Kimball@la.gov](mailto:Jodie.Kimball@la.gov) for transporter info
- [Kimberly.Carter@la.gov](mailto:Kimberly.Carter@la.gov) for generator/transporter info
- [dutch.donlon@la.gov](mailto:dutch.donlon@la.gov) for processor info

# THE END



All information contained herein is provided solely for educational purposes. It is not intended as a substitute for professional or legal advice. Should you decide to act upon any information contained in this presentation, you do so at your own risk.

While the information posted has been verified to the best of our abilities, we cannot guarantee that there are no mistakes or errors.



LOUISIANA DEPARTMENT OF ENVIRONMENTAL QUALITY

**ENVIROSCOOL**